

Location

Whitcomb Hall
17 Main St, Swanzey, NH

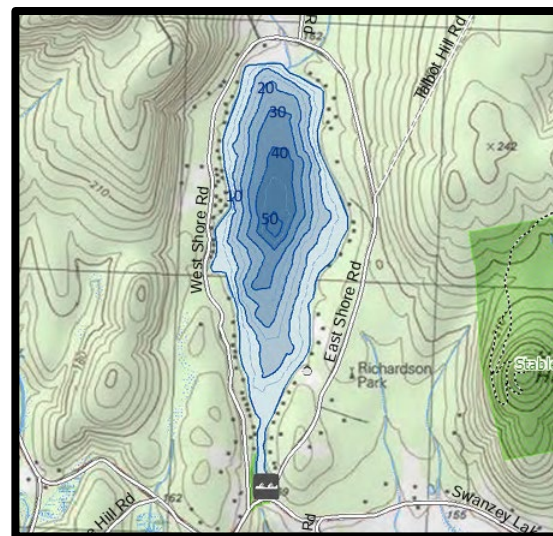
Site Assessment:
Richardson Park, Swanzey, NH

Who Should Attend?

This program is designed for landscapers and others who develop, maintain, or preserve properties in and around the Monadnock Region, including:

- Landscape designers, contractors, maintenance professionals, and those who hire them
- Members of watershed groups, conservation commissions, organizations and agencies who want to learn about ecological approaches to landscaping
- Municipal staff and contractors involved in landscaping, land care and development
- Students in environment or landscape focused programs

Note: Although some information included in this program will be specific to Swanzey and surrounding areas, most content is relevant across New Hampshire.



Swanzey Lake, Swanzey

Participants will learn how to use ecological concepts and landscape features such as rain gardens, vegetative buffers, and other green infrastructure to protect lakes, rivers, streams and bays. Instructors are from universities, university centers, university extension, environmental agencies, municipalities, and private enterprise. Thanks to all of our sponsors!



Landscaping for Water Quality in the Keene area

COVID-19 Precautions

Precautions will align with US CDC, State of NH, and UNH guidelines in place at the time and location of the event. Participants are welcome to wear masks, especially for the indoor portions of the workshop.

Participants are requested to stay home if they are not feeling well on the days of the event. Please contact Michelle Lemos (michelle.lemos@unh.edu) about registration options if needed due to illness.

Comments from Past Participants

“So happy I could take part in the program. I feel much more confident to go ahead installing, designing, and properly educating in my field the storm water BMPs taught in this workshop.”

“This workshop was fun, engaging, informative and life-changing for myself and my business.”

“I loved the hands-on approach to the workshop. Being able to physically go on a site and utilize all the tools I learned from the workshop was instrumental in solidifying all the concepts.”

UNH Cooperative Extension programs and policies are consistent with pertinent Federal and State laws and regulations on non-discrimination regarding age, color, handicap, national origin, race, religion, sex, sexual orientation, or veterans status.

Swanzey, NH
March 30 & 31, 2023





Registration

Thursday, March 30

Friday, March 31

- 9:00 **Welcome and Introductions**
- 9:15 **Water Quality Considerations in Landscaping**
Tom Swenson
- 9:50 **Water Quality in and Around Swanzey**
Jeff Lapid, President, Swanzey Lake Protective Association
- 10:00 **Introduction to Ecological Services and Functions**
Julia Peterson
- 10:10 **Water Resource Protection Principles and Strategies**
Julia Peterson
- 10:40 **Break**
- 10:55 **Assessing and Understanding Soil Characteristics**
Steph Sosinski, Home Horticulture Program Manager, UNH Extension Food and Agriculture
- 11:25 **Residential-Scale Stormwater Management Practices**
Lisa Loosigian
- 11:55 **Lunch**
- 12:40 **Rain Garden Sizing, Installation and Maintenance**
Lisa Loosigian
- 1:10 **Integrating Multiple Functions in Ecological Landscape Design**
Lauren Chase-Rowell
- 1:55 **Instructions for Site Assessment**
Lisa Loosigian
- 2:05 **Travel to Site and Site Awareness Exercises at Richardson Park**
Lisa Loosigian and Lauren Chase-Rowell
- 2:50 **Exploration/Assessment of Richardson Park until 4:15**

- 8:30 **Welcome Back**
- 8:45 **Local Concerns, Regulations and Efforts**
Panel of municipal and regional representatives
- 9:15 **NH State Shoreland Water Quality Protection Act**
Jay Aube, Project Manager and Environmental Permitting Specialist, TF Moran
- 10:15 **Break**
- 10:30 **Speaking with Clients about Eco-Friendly Practices: What Works for You?**
Group dialogue facilitated by Program Team
- 11:00 **Is There a Market for Water Quality-Oriented Landscaping Services?**
Julia Peterson
- 11:15 **Lawn Care Best Management Practices for Water Quality Protection**
Brendan Noons, Department of Plant Science and Landscape Architecture, University of Connecticut
- 12:15 **Lunch**
- 1:00 **Selecting Plants for Stormwater Installations**
Sean O'Brien, Home Horticulture Program Manager, UNH Extension Food and Agriculture
- 1:30 **Instructions for "Putting It All Together"**
Lauren Chase-Rowell
- 1:45 **Putting It All Together: Collaboration**
- 2:30 **Break**
- 2:40 **Putting It All Together: Presentations**
- 4:00 **Final Adjourn**

Cost per person
 Early bird (ends March 15): \$85
 After March 15: \$95
 Limited capacity. [Register now!](#)
 Registration fee includes morning refreshments and lunch.

All participants will receive required digital and printed handouts. A digital copy of "Landscaping at the Water's Edge" can be downloaded [on the UNH Extension website](#) or hard copy can be purchased at registration for an additional \$15.00.

For more information and to register:
<https://www.des.nh.gov/events/2023-landscaping-water-quality-workshop>

Pesticide credits will be available, pending state approval. Recertification credit for the New Hampshire Certified Landscape Professionals Program will also be available through the NHLA.

If you need assistance with registration, please contact Michelle.Lemos@unh.edu, 603-862-6702

No person shall be denied access to the information provided through this program because of the inability to pay. A limited number of scholarships are available to individuals unable to pay.

ADA Statement: Persons requiring special accommodations should call 603-862-6702 two weeks prior to the workshop date so that proper consideration can be given to the request.

Event Coordinators and Instructors
 Lauren Chase-Rowell, Outdoor Rooms Ecological and Sustainable Landscape Design Services, Owner; NH Technical Institute Instructor
 Lisa Loosigian, NH Department of Environmental Services (NHDES), Soak Up the Rain NH Program Coordinator
 Julia Peterson, NH Sea Grant and UNH Extension, Coastal Communities/Water Resources State Specialist
 Tom Swenson, NHDES, NPDES Outreach and Education Coordinator