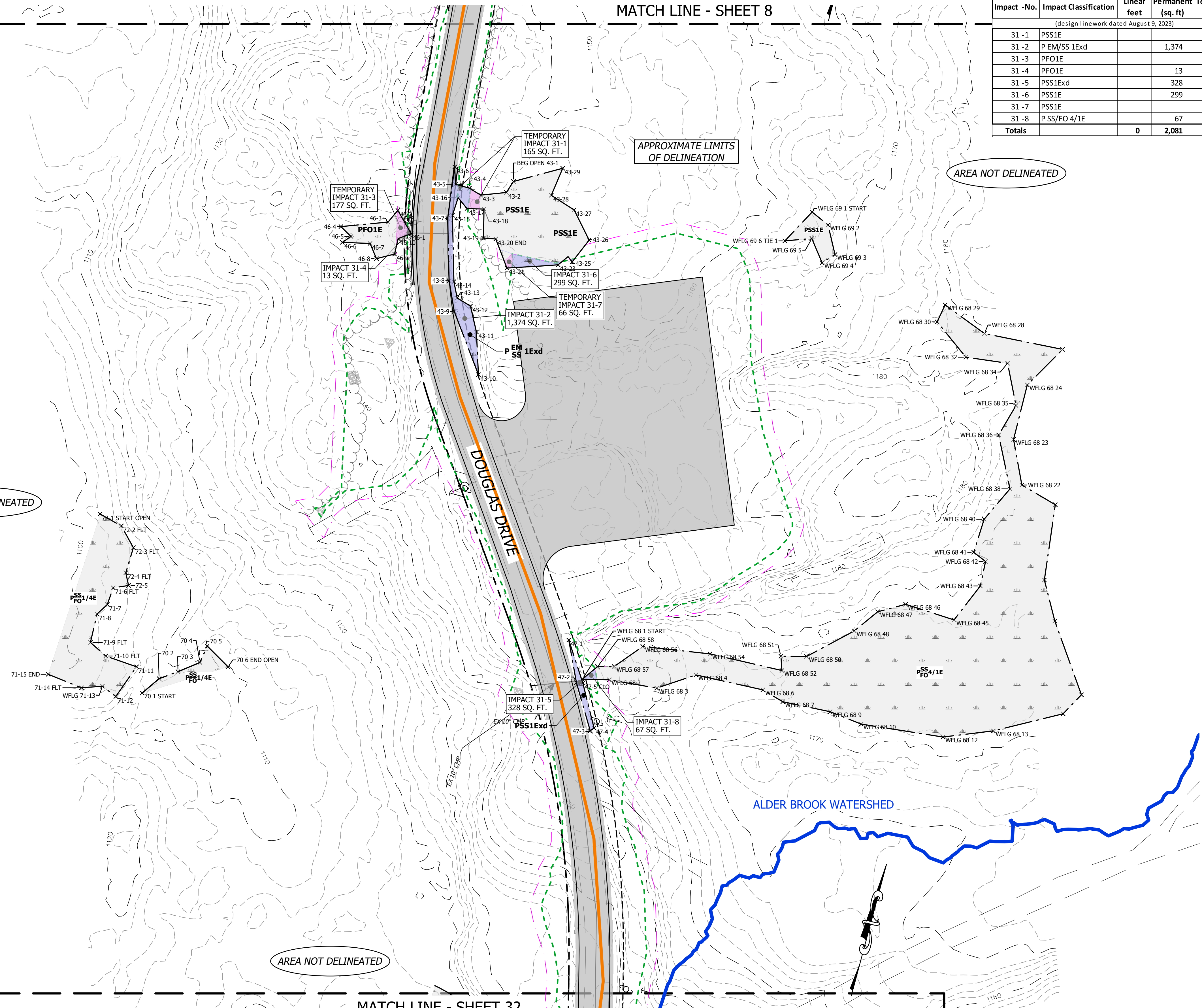


MATCH LINE - SHEET 7

MATCH LINE - SHEET 8

Impact -No.	Impact Classification	Linear feet	Permanent (sq. ft.)	Temporary (sq. ft.)
(design linework dated August 9, 2023)				
31 -1	PSS1E			165
31 -2	P EM/SS 1Exd		1,374	
31 -3	PFO1E			177
31 -4	PFO1E		13	
31 -5	PSS1Exd		328	
31 -6	PSS1E		299	
31 -7	PSS1E			66
31 -8	P SS/FO 4/1E		67	
Totals		0	2,081	408



AREA NOT DELINEATED

APPROXIMATE LIMITS OF DELINEATION

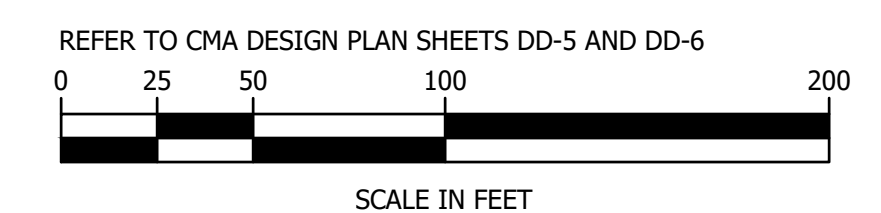
AREA NOT DELINEATED

AREA NOT DELINEATED

MATCH LINE - SHEET 32

LEGEND		WETLAND CLASSIFICATION	
	WATERSHED BOUNDARY		ORDINARY HIGH WATER MARK
	SKID ROAD (PER AERIAL PHOTOGRAPHY)		PERENNIAL STREAM
	LIMIT OF EXCAVATION (PERM. IMPACT)		INTERMITTENT STREAM
	LIMIT OF DISTURBANCE (TEMP. IMPACT)		EPHEMERAL FLOW
	EXISTING LOT LINE		WETLAND DELINEATION LINE
	SUBJECT PROPERTY BOUNDARY LINE		PERENNIAL STREAM
	ANCHOR TRENCH BOUNDARY (LIMIT OF WASTE)		INTERMITTENT STREAM
	PERMANENT WETLAND IMPACT		EPHEMERAL FLOW
	TEMPORARY WETLAND IMPACT		
	EXISTING WETLAND IMPACT FOR AFTER THE FACT PERMIT		

	GRAVEL ROAD		BEAVER DAM
	MINOR CONTOUR (2')		UPLAND MONITORING WELL
	MAJOR CONTOUR (10')		GROUNDWATER SEEP
	APPROXIMATE LOCATIONS (NOT FLAGGED)		FLAG POINT AND ID # (STRING# & FLAG #)
	WETLAND AREA		
	PERENNIAL STREAM		
	INTERMITTENT STREAM		
	EPHEMERAL FLOW		

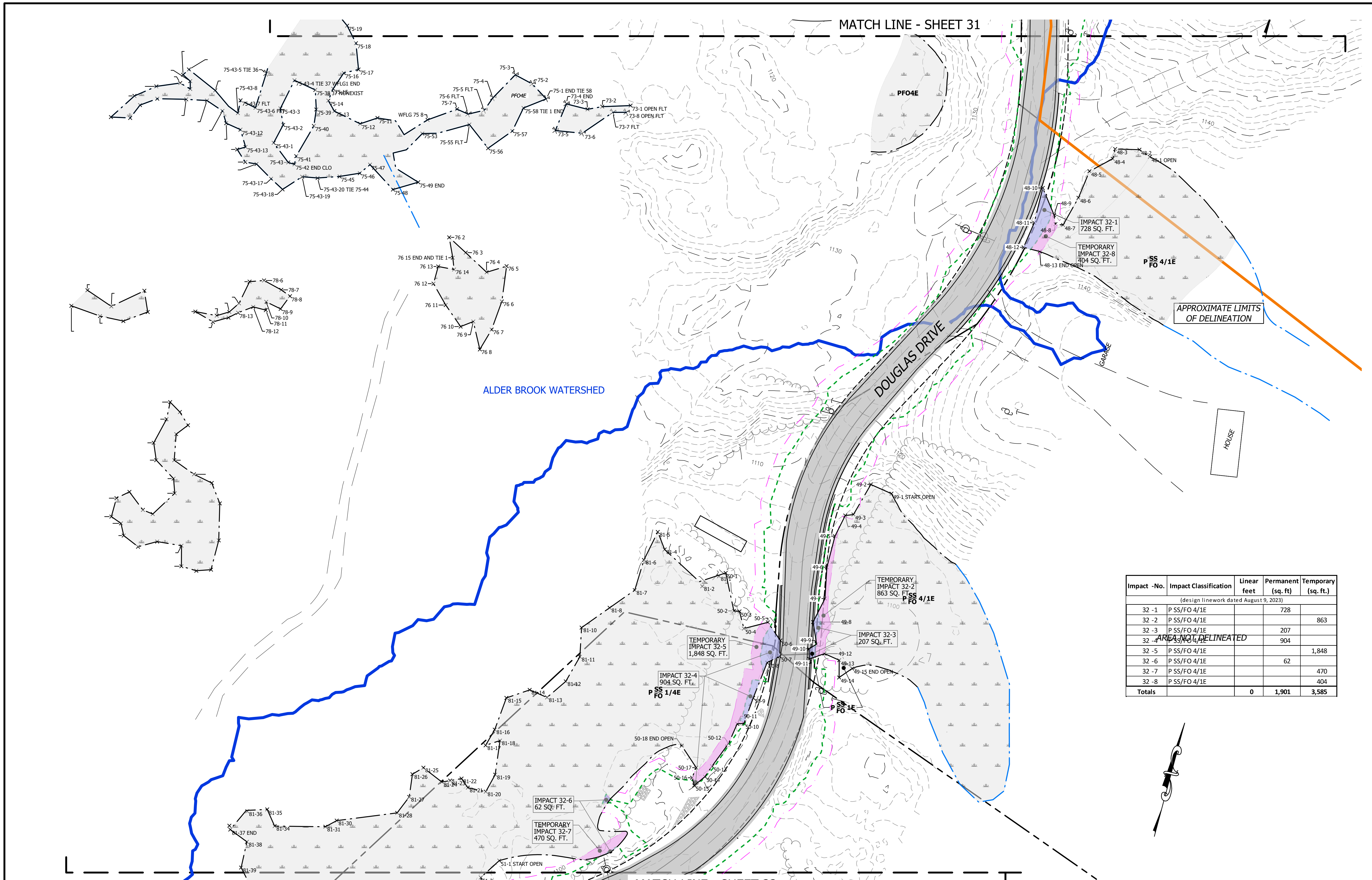


FEBRUARY 01 2024



horizons
Engineering

Z:\proj_2019\19045 NCE5 - Dalton\DWGSS\Final\19045 Wet_Layouts-21.dwg, 31-1-Y, 2/1/2024 6:17:55 PM, KarenPhillips



Impact -No.	Impact Classification	Linear feet	Permanent (sq. ft)	Temporary (sq. ft)
(design linework dated August 9, 2023)				
32 -1	P SS/FO 4/1E		728	863
32 -2	P SS/FO 4/1E			863
32 -3	P SS/FO 4/1E		207	
32 -4	P SS/FO 4/1E		904	
32 -5	P SS/FO 4/1E			1,848
32 -6	P SS/FO 4/1E		62	
32 -7	P SS/FO 4/1E			470
32 -8	P SS/FO 4/1E			404
Totals		0	1,901	3,585

LEGEND

- PERMANENT WETLAND IMPACT
- TEMPORARY WETLAND IMPACT
- EXISTING WETLAND IMPACT FOR AFTER THE FACT PERMIT
- ORDINARY HIGH WATER MARK
- PERENNIAL STREAM
- INTERMITTENT STREAM
- EPHEMERAL FLOW
- WETLAND DELINEATION LINE
- WETLAND CLASSIFICATION
- GRAVEL ROAD
- MINOR CONTOUR (2')
- MAJOR CONTOUR (10')
- APPROXIMATE LOCATIONS (NOT FLAGGED)
- WETLAND AREA
- PERENNIAL STREAM
- INTERMITTENT STREAM
- EPHEMERAL FLOW
- BEAVER DAM
- UPLAND
- MONITORING WELL
- GROUNDWATER SEEP
- FLAG POINT AND ID # (STRING# & FLAG #)

MATCH LINE - SHEET 33

REFER TO CMA DESIGN PLAN SHEETS DD-4 AND DD-5

SCALE IN FEET

DATE OF PRINT
FEBRUARY 01 2024
HORIZONS ENGINEERING

© 2024
All rights reserved

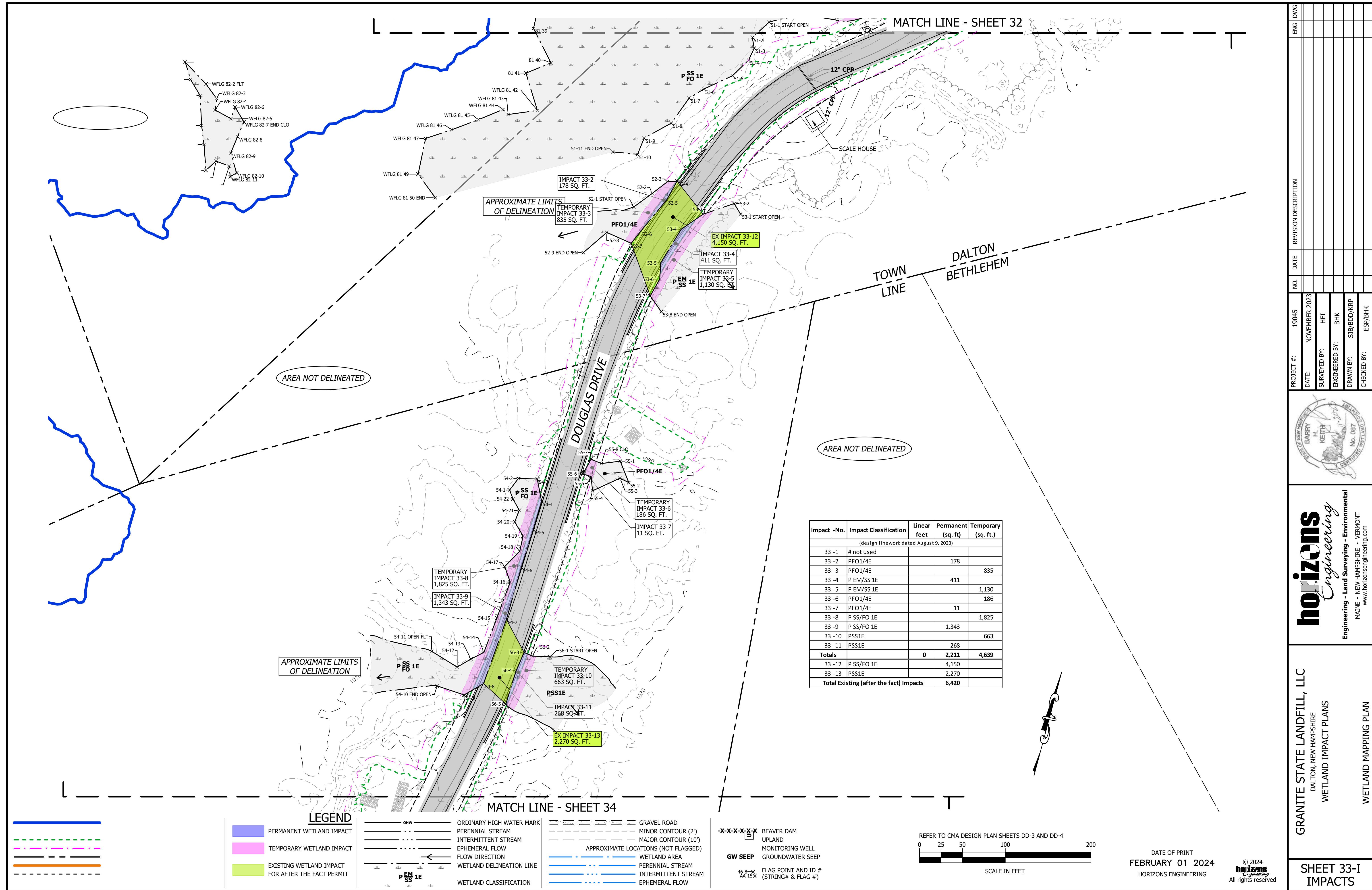
PROJECT #: 19045
DATE: NOVEMBER 2023
SURVEYED BY: HET
ENGINEERED BY: BHK
DRAWN BY: SJB/BDD/KRP
CHECKED BY: ESP/BHK

REVISION DESCRIPTION
NO. DATE
1 01/2024 EDITS PER NHDES LETTER: DECEMBER 21, 2023

GRANITE STATE LANDFILL, LLC
DALTON, NEW HAMPSHIRE
WETLAND IMPACT PLANS

WETLAND MAPPING PLAN

SHEET 32-I
IMPACTS



MATCH LINE - SHEET 32

MATCH LINE - SHEET 34

Impact -No.	Impact Classification	Linear feet	Permanent (sq. ft)	Temporary (sq. ft.)
(design linework dated August 9, 2023)				
33 - 1	# not used			
33 - 2	PFO1/4E		178	
33 - 3	PFO1/4E			835
33 - 4	P EM/SS 1E		411	
33 - 5	P EM/SS 1E			1,130
33 - 6	PFO1/4E		186	
33 - 7	PFO1/4E		11	
33 - 8	P SS/FO 1E			1,825
33 - 9	P SS/FO 1E		1,343	
33 - 10	PSS1E			663
33 - 11	PSS1E		268	
Totals		0	2,211	4,639
33 - 12	P SS/FO 1E		4,150	
33 - 13	PSS1E		2,270	
Total Existing (after the fact) Impacts			6,420	

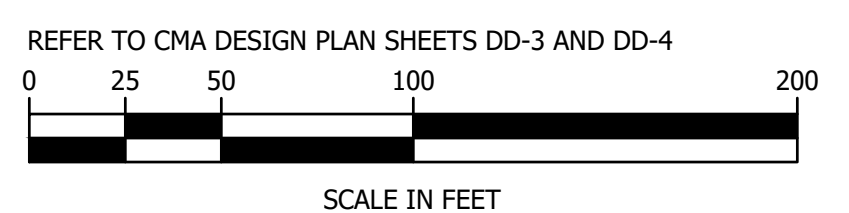
AREA NOT DELINEATED

AREA NOT DELINEATED

APPROXIMATE LIMITS OF DELINEATION

LEGEND

- PERMANENT WETLAND IMPACT
- TEMPORARY WETLAND IMPACT
- EXISTING WETLAND IMPACT FOR AFTER THE FACT PERMIT
- ORDINARY HIGH WATER MARK
- PERENNIAL STREAM
- INTERMITTENT STREAM
- EPHEMERAL FLOW
- FLOW DIRECTION
- WETLAND DELINEATION LINE
- WETLAND CLASSIFICATION
- GRAVEL ROAD
- MINOR CONTOUR (2')
- MAJOR CONTOUR (10')
- APPROXIMATE LOCATIONS (NOT FLAGGED)
- WETLAND AREA
- PERENNIAL STREAM
- INTERMITTENT STREAM
- EPHEMERAL FLOW
- X-X-X-X BEAVER DAM
- UPLAND MONITORING WELL
- GROUNDWATER SEEP
- 46-8-X FLAG POINT AND ID # (STRING# & FLAG #)



DATE OF PRINT
FEBRUARY 01 2024
HORIZONS ENGINEERING

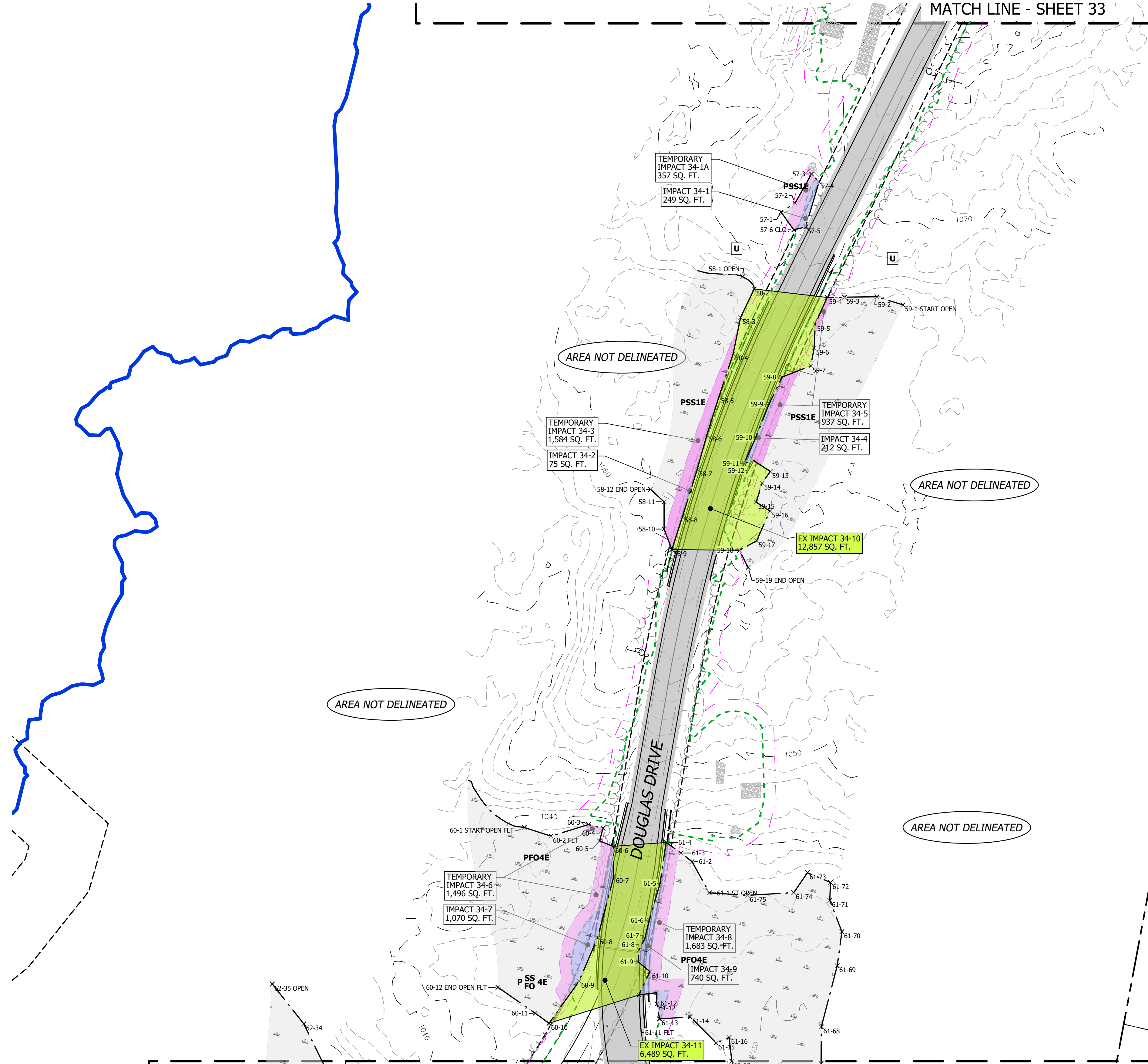


PROJECT #:	NO.	DATE	REVISION DESCRIPTION	ENG	DWG
19045					
DATE:	NOVEMBER 2023				
SURVEYED BY:	HET				
ENGINEERED BY:	BHK				
DRAWN BY:	SJB/BD/KRP				
CHECKED BY:	ESP/BHK				



horizons Engineering
 Engineering - Land Surveying - Environmental
 MAINE • NEW HAMPSHIRE • VERMONT
 www.horizonsengineering.com

GRANITE STATE LANDFILL, LLC
 DALTON, NEW HAMPSHIRE
 WETLAND IMPACT PLANS
 WETLAND MAPPING PLAN
 SHEET 33-I
 IMPACTS



MATCH LINE - SHEET 33

MATCH LINE - SHEET 35

AREA NOT DELINEATED

AREA NOT DELINEATED

AREA NOT DELINEATED

AREA NOT DELINEATED

AREA NOT DELINEATED

Impact -No.	Impact Classification	Linear feet	Permanent (sq. ft)	Temporary (sq. ft.)
(design linework dated August 9, 2023)				
34 -1	PSS1E		249	
34 -1A	PSS1E			357
34 -2	PSS1E		75	
34 -3	PSS1E			1,584
34 -4	PSS1E		212	
34 -5	PSS1E			937
34 -6	P SS/FO 4E		1,496	
34 -7	P SS/FO 4E		1,070	
34 -8	PFO4E			1,683
34 -9	PFO4E		740	
Totals		0	2,346	6,057
34 -10	PSS1E			12,857
34 -11	PFO4E			6,489
Total Existing (after the fact) Impacts			19,346	

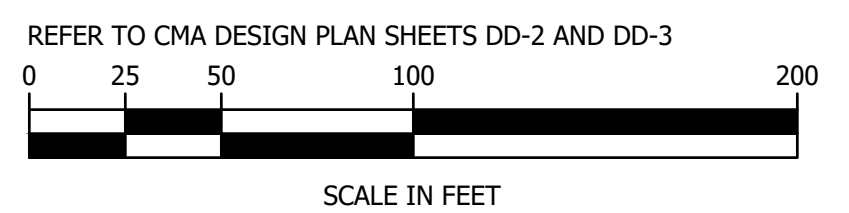
LEGEND

- PERMANENT WETLAND IMPACT
- TEMPORARY WETLAND IMPACT
- EXISTING WETLAND IMPACT FOR AFTER THE FACT PERMIT

- ORDINARY HIGH WATER MARK
- PERENNIAL STREAM
- INTERMITTENT STREAM
- EPHEMERAL FLOW
- FLOW DIRECTION
- WETLAND DELINEATION LINE
- WETLAND CLASSIFICATION

- GRAVEL ROAD
- MINOR CONTOUR (2')
- MAJOR CONTOUR (10')
- APPROXIMATE LOCATIONS (NOT FLAGGED)
- WETLAND AREA
- PERENNIAL STREAM
- INTERMITTENT STREAM
- EPHEMERAL FLOW

- BEAVER DAM
- UPLAND MONITORING WELL
- GROUNDWATER SEEP
- FLAG POINT AND ID # (STRING# & FLAG #)



DATE OF PRINT
FEBRUARY 01 2024
 HORIZONS ENGINEERING



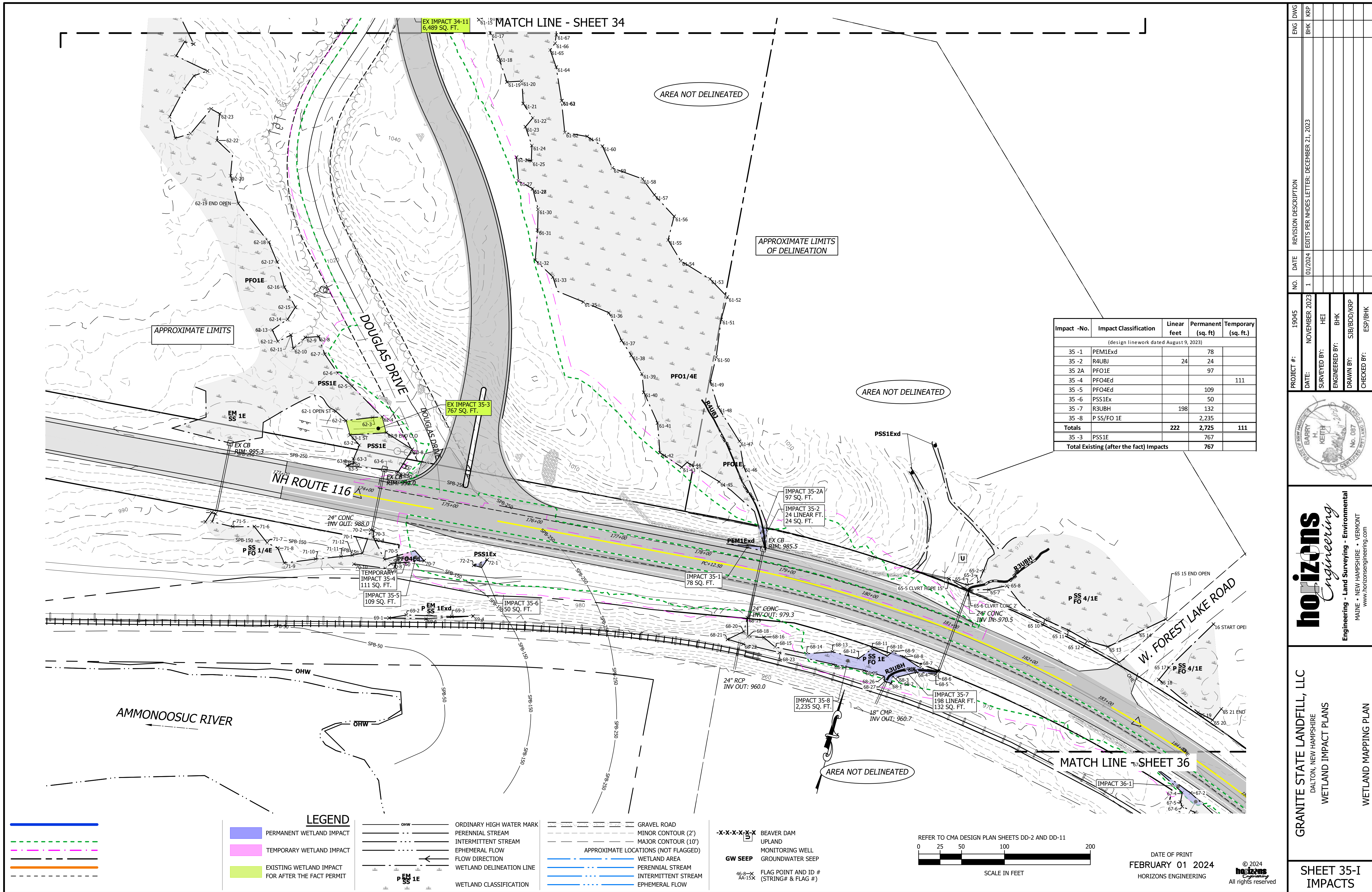
NO.	DATE	REVISION DESCRIPTION

PROJECT #: 19045 DATE: NOVEMBER 2023 SURVEYED BY: HEI ENGINEERED BY: BHK DRAWN BY: SJB/BJD/KRP CHECKED BY: ESP/BHK



horizons
Engineering

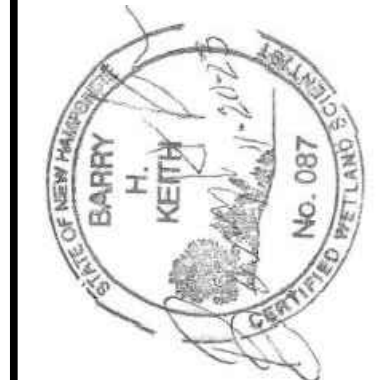
Engineering - Land Surveying - Environmental
 MAINE • NEW HAMPSHIRE • VERMONT
 www.horizonsengineering.com



Impact -No.	Impact Classification	Linear feet	Permanent (sq. ft)	Temporary (sq. ft.)
(design linework dated August 9, 2023)				
35 -1	PEM1Exd		78	
35 -2	R4UBJ	24	24	
35 2A	PFO1E		97	
35 -4	PFO4Ed			111
35 -5	PFO4Ed		109	
35 -6	PSS1Ex		50	
35 -7	R3UBH	198	132	
35 -8	P SS/FO 1E		2,235	
Totals		222	2,725	111
35 -3	PSS1E		767	
Total Existing (after the fact) Impacts			767	

NO.	DATE	REVISION DESCRIPTION
1	01/2024	EDITS PER NHDES LETTER: DECEMBER 21, 2023

PROJECT #:	19045
DATE:	NOVEMBER 2023
SURVEYED BY:	HEI
ENGINEERED BY:	BHK
DRAWN BY:	SJB/BDD/KRP
CHECKED BY:	ESP/BHK

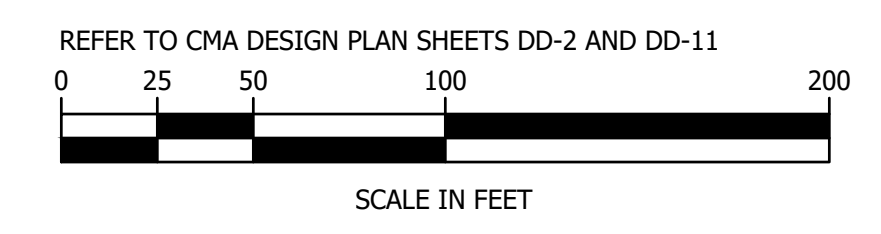


horizons
Engineering
Engineering - Land Surveying - Environmental
MAINE • NEW HAMPSHIRE • VERMONT
www.horizonsengineering.com

GRANITE STATE LANDFILL, LLC
DALTON, NEW HAMPSHIRE
WETLAND IMPACT PLANS
WETLAND MAPPING PLAN
SHEET 35-I
IMPACTS

LEGEND

- PERMANENT WETLAND IMPACT
- TEMPORARY WETLAND IMPACT
- EXISTING WETLAND IMPACT FOR AFTER THE FACT PERMIT
- ORDINARY HIGH WATER MARK
- PERENNIAL STREAM
- INTERMITTENT STREAM
- EPHEMERAL FLOW
- FLOW DIRECTION
- WETLAND DELINEATION LINE
- WETLAND CLASSIFICATION
- GRAVEL ROAD
- MINOR CONTOUR (2')
- MAJOR CONTOUR (10')
- APPROXIMATE LOCATIONS (NOT FLAGGED)
- WETLAND AREA
- PERENNIAL STREAM
- INTERMITTENT STREAM
- EPHEMERAL FLOW
- X-X-X-X-X BEAVER DAM
- U UPLAND
- M MONITORING WELL
- GW SEEP GROUNDWATER SEEP
- 46-8-X FLAG POINT AND ID # (STRING# & FLAG #)
- AA-15X

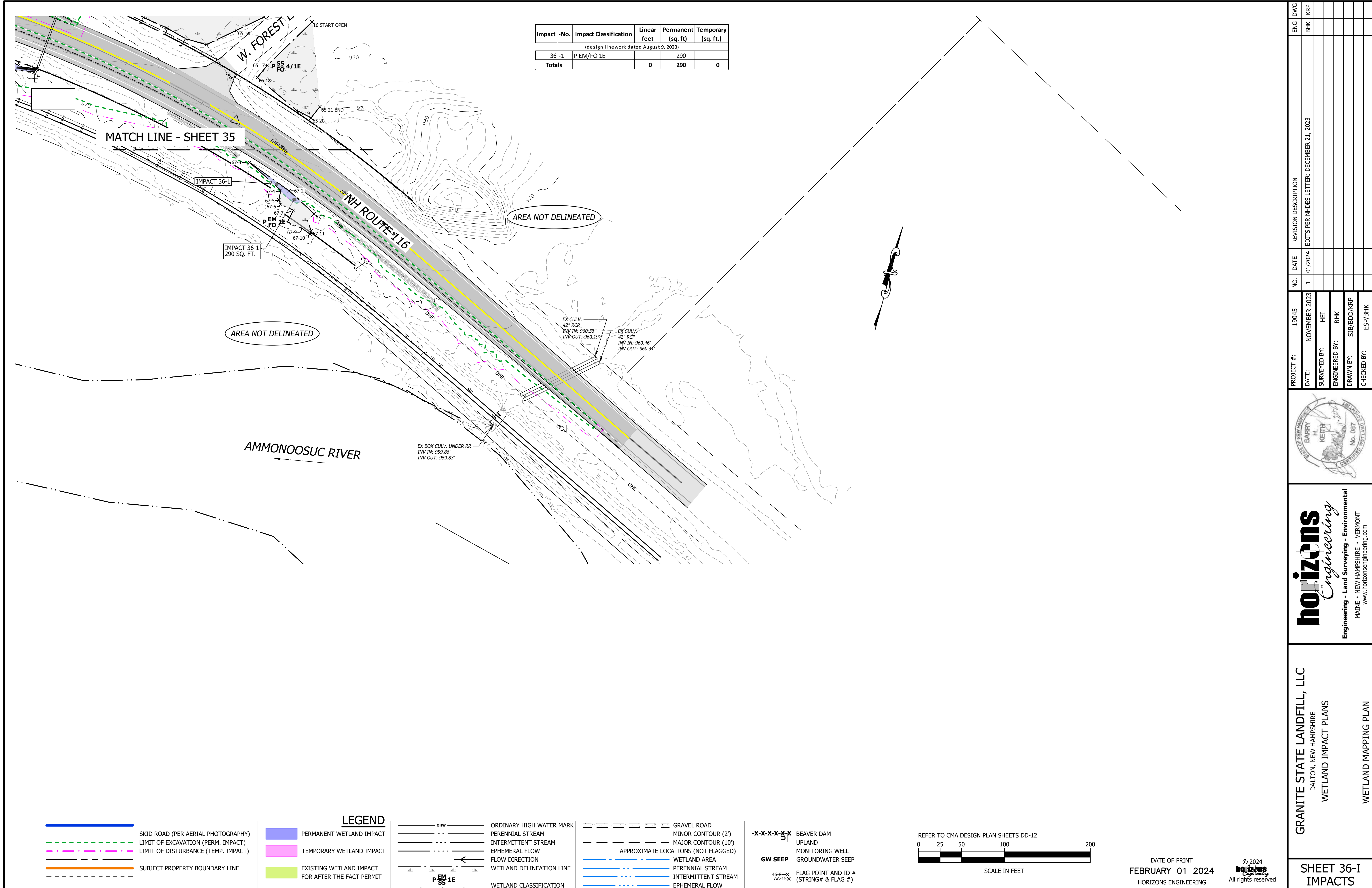


DATE OF PRINT
FEBRUARY 01 2024
HORIZONS ENGINEERING



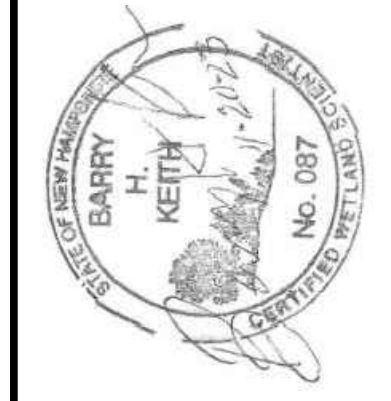
Impact -No.	Impact Classification	Linear feet	Permanent (sq. ft)	Temporary (sq. ft.)
36 -1	P EM/FO 1E		290	
Totals		0	290	0

(Design linework dated August 9, 2023)



NO.	DATE	REVISION DESCRIPTION
1	01/2024	EDITS PER NHDES LETTER: DECEMBER 21, 2023

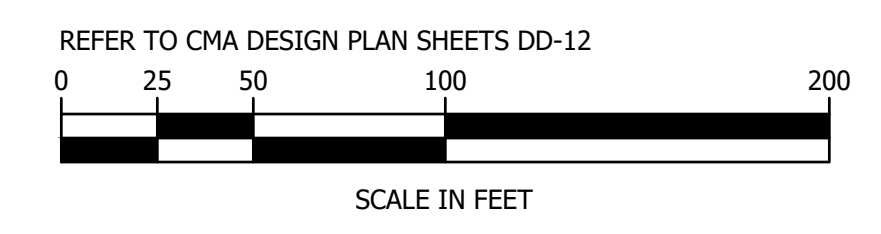
PROJECT #:	19045
DATE:	NOVEMBER 2023
SURVEYED BY:	HEI
ENGINEERED BY:	BHK
DRAWN BY:	SJB/BDD/KRP
CHECKED BY:	ESP/BHK



horizons Engineering
 Engineering - Land Surveying - Environmental
 MAINE • NEW HAMPSHIRE • VERMONT
 www.horizonsengineering.com

GRANITE STATE LANDFILL, LLC
 DALTON, NEW HAMPSHIRE
 WETLAND IMPACT PLANS
 WETLAND MAPPING PLAN

<p>— SKID ROAD (PER AERIAL PHOTOGRAPHY)</p> <p>--- LIMIT OF EXCAVATION (PERM. IMPACT)</p> <p>--- LIMIT OF DISTURBANCE (TEMP. IMPACT)</p> <p>--- SUBJECT PROPERTY BOUNDARY LINE</p>	<p>LEGEND</p> <p>PERMANENT WETLAND IMPACT</p> <p>TEMPORARY WETLAND IMPACT</p> <p>EXISTING WETLAND IMPACT FOR AFTER THE FACT PERMIT</p>	<p>— OHW — ORDINARY HIGH WATER MARK</p> <p>— PERENNIAL STREAM</p> <p>— INTERMITTENT STREAM</p> <p>— EPHEMERAL FLOW</p> <p>— FLOW DIRECTION</p> <p>— WETLAND DELINEATION LINE</p> <p>— WETLAND CLASSIFICATION</p>	<p>--- GRAVEL ROAD</p> <p>--- MINOR CONTOUR (2')</p> <p>--- MAJOR CONTOUR (10')</p> <p>--- APPROXIMATE LOCATIONS (NOT FLAGGED)</p> <p>--- WETLAND AREA</p> <p>--- PERENNIAL STREAM</p> <p>--- INTERMITTENT STREAM</p> <p>--- EPHEMERAL FLOW</p>	<p>-X-X-X-X-X- BEAVER DAM</p> <p>UPLAND MONITORING WELL</p> <p>GROUNDWATER SEEP</p> <p>GW SEEP</p> <p>46-8-2X AA-15X FLAG POINT AND ID # (STRING# & FLAG #)</p>
--	---	--	---	--



DATE OF PRINT
FEBRUARY 01 2024
 HORIZONS ENGINEERING

© 2024
 horizons Engineering
 All rights reserved

SHEET 36-I
IMPACTS

Attachment 4
Wetland Impact Summary

Table 1 - Summary of Wetland Impacts by Cover Type and Town
Granite State Landfill, LLC
Dalton, New Hampshire

Impact - Number	Cover Type	Cover Type 2	Town	Impacted Stream Length (Linear Feet)			Impacted Surface Area (Square Feet)			
				Permanent	After-the-Fact	Total	Permanent	Temporary	After-the-Fact	Total
1 -1	PFO1E	FO	Dalton	-	-	-	-	-	1,080	1,080
1 -2	R3UBH	R3	Dalton	-	120	120	-	-	40	40
2 -1	PEM1E	EM	Dalton	-	-	-	-	-	1,418	1,418
2 -1A	R4UBJ	R4	Dalton	-	30	30	-	-	30	30
2 -2	PEM1E	EM	Dalton	-	-	-	-	-	2,234	2,234
2 -2A	R3UBH	R3	Dalton	-	60	60	-	-	75	75
2 -3	PFO1E	FO	Dalton	-	-	-	-	-	2,380	2,380
2 -4	P SS/FO 1E	SS	Dalton	-	-	-	-	-	2,750	2,750
2 -5	R4UBJ	R4	Dalton	-	20	20	-	-	25	25
8 -1	PSS1Ex	SS	Dalton	-	-	-	111	-	-	111
8 -2	PFO1E	FO	Dalton	-	-	-	44	-	-	44
8 -3	PFO1E	FO	Dalton	-	-	-	-	122	-	122
8 -4	PSS1Edx	SS	Dalton	-	-	-	-	416	-	416
8 -5	PSS1Edx	SS	Dalton	-	-	-	1,649	-	-	1,649
8 -6	PFO1E	FO	Dalton	-	-	-	124	-	-	124
8 -7	PFO1E	FO	Dalton	-	-	-	-	516	-	516
8 -8	P SS/FO 1E	SS	Dalton	-	-	-	-	48	-	48
8 -9	PSS1Ex	SS	Dalton	-	-	-	-	65	-	65
8 -10	SS	SS	Dalton	-	-	-	-	186	-	186
9 -1	P SS/FO 1E	SS	Dalton	-	-	-	-	24	-	24
9 -2	P SS/FO 1E	SS	Dalton	-	-	-	1,627	-	-	1,627
13 -1	R4UBJ	R4	Dalton	932	-	932	1,864	-	-	1,864
13 -2	PFO1E	FO	Dalton	-	-	-	27,720	-	-	27,720
13 -3	PFO1E	FO	Dalton	-	-	-	7,686	-	-	7,686
13 -4	PFO1E	FO	Dalton	-	-	-	-	-	331	331
19 -1	PFO1E	FO	Dalton	-	-	-	1,126	-	-	1,126
19 -2	PFO1E	FO	Dalton	-	-	-	622	-	-	622
19 -2A	PFO1E	FO	Dalton	-	-	-	-	50	-	50
19 -3	PFO1E	FO	Dalton	-	-	-	92	-	-	92
19 -4	PFO1E	FO	Dalton	-	-	-	140	-	-	140
19 -5	PFO1E	FO	Dalton	-	-	-	2,441	-	-	2,441
19 -6	PFO1E	FO	Dalton	-	-	-	2,111	-	-	2,111
19 -7	PFO1E	FO	Dalton	-	-	-	116	-	-	116
20 -1	# not used	-	Dalton	-	-	-	-	-	-	-
20 -2	PFO1E	FO	Dalton	-	-	-	1,771	-	-	1,771
20 -3	PFO1E	FO	Dalton	-	-	-	359	-	-	359
20 -4	PFO1E	FO	Dalton	-	-	-	3,539	-	-	3,539
20 -5	PSS1E	SS	Dalton	-	-	-	3,443	-	-	3,443
20 -6	PSS1E	SS	Dalton	-	-	-	2,742	-	-	2,742
20 -7	PFO1E/4E	FO	Dalton	-	-	-	24,695	-	-	24,695
20 -8	PFO1E	FO	Dalton	-	-	-	1,717	-	-	1,717
20 -9	PFO1E	FO	Dalton	-	-	-	3,320	-	-	3,320
20 -10	PFO1E	FO	Dalton	-	-	-	798	-	-	798
20 -11	PFO1E	FO	Dalton	-	-	-	2,189	-	-	2,189
21 -1	PSS1Edx	SS	Dalton	-	-	-	-	94	-	94
21 -1A	PSS1Edx	SS	Dalton	-	-	-	1,451	-	-	1,451
21 -2	PFO1E	FO	Dalton	-	-	-	6,078	-	-	6,078
21 -3	PSS1E	SS	Dalton	-	-	-	995	-	-	995
21 -4	PFO1E	FO	Dalton	-	-	-	13,529	-	-	13,529
21 -5	PEM1Edx	EM	Dalton	-	-	-	204	-	-	204
21 -6	DITCH PEM1xd	EM	Dalton	-	-	-	1,048	-	-	1,048
21 -7	PFO1E	FO	Dalton	-	-	-	4,510	-	-	4,510
21 -8	P SS/FO 1E	SS	Dalton	-	-	-	8,697	-	-	8,697
21 -9	PFO1/4E	FO	Dalton	-	-	-	4,840	-	-	4,840
21 -10	P EM/SS /FO 1/4E	EM	Dalton	-	-	-	6,411	-	-	6,411
21 -11	P EM/SS 1E	EM	Dalton	-	-	-	7,634	-	-	7,634
21 -12	PFO1E	FO	Dalton	-	-	-	559	-	-	559
21 -13	PSS1E	SS	Dalton	-	-	-	1,459	-	-	1,459
21 -14	PSS1E	SS	Dalton	-	-	-	2,524	-	-	2,524
21 -15	PSS1E	SS	Dalton	-	-	-	3,768	-	-	3,768
21 -16	PFO1E	FO	Dalton	-	-	-	4,864	-	-	4,864
21 -17	PSS1E	SS	Dalton	-	-	-	1,312	-	-	1,312
21 -18	PFO1/4E	FO	Dalton	-	-	-	8,883	-	-	8,883
21 -19	PFO1E	FO	Dalton	-	-	-	25,853	-	-	25,853
21 -20	P EM/SS / FO 1/4E	EM	Dalton	-	-	-	12,489	-	-	12,489
21 -21	PFO1E	FO	Dalton	-	-	-	573	-	-	573
21 -22	PFO1E	FO	Dalton	-	-	-	7,730	-	-	7,730
21 -23	PFO1/4E	FO	Dalton	-	-	-	3,198	-	-	3,198
21 -24	PSS1E	SS	Dalton	-	-	-	17,153	-	-	17,153
21 -25	PFO1E	FO	Dalton	-	-	-	3,810	-	-	3,810
21 -26	PFO1E	FO	Dalton	-	-	-	1,832	-	-	1,832
21 -27	P EM/SS 1E	EM	Dalton	-	-	-	5,626	-	-	5,626
21 -28	PSS1E	SS	Dalton	-	-	-	22,767	-	-	22,767
21 -29	P SS/FO 1/4E	SS	Dalton	-	-	-	13,768	-	-	13,768
21 -30	PSS1Edx	SS	Dalton	-	-	-	793	-	-	793
21 -31	PSS1Edx	SS	Dalton	-	-	-	-	204	-	204
21 -32	P EM/FO 1	EM	Dalton	-	-	-	9,991	-	-	9,991
21 -33	PSS1E	SS	Dalton	-	-	-	834	-	-	834
21 -34	PFO1E	FO	Dalton	-	-	-	146	-	-	146
22 -1A	P EM/FO 1	EM	Dalton	-	-	-	-	109	-	109
22 -1B	PSS1E dx	SS	Dalton	-	-	-	-	123	-	123
22 -2	PSS1E dx	SS	Dalton	-	-	-	836	-	-	836
22 -4	PFO1E	FO	Dalton	-	-	-	3,663	-	-	3,663
22 -5	P SS/FO 1E	SS	Dalton	-	-	-	2,990	-	-	2,990
22 -6	PFO1E	FO	Dalton	-	-	-	3,223	-	-	3,223
22 -7	PSS1E	SS	Dalton	-	-	-	13,297	-	-	13,297
22 -8	PFO1E	FO	Dalton	-	-	-	1,362	-	-	1,362
22 -9	PFO1E	FO	Dalton	-	-	-	187	-	-	187
22 -10	PFO1E	FO	Dalton	-	-	-	204	-	-	204

Table 1 - Summary of Wetland Impacts by Cover Type and Town
 Granite State Landfill, LLC
 Dalton, New Hampshire

Impact - Number	Cover Type	Cover Type 2	Town	Impacted Stream Length (Linear Feet)			Impacted Surface Area (Square Feet)			
				Permanent	After-the-Fact	Total	Permanent	Temporary	After-the-Fact	Total
22 -11	P EM/SS E	EM	Dalton	-	-	-	837	-	-	837
22 -12	PFO1E	FO	Dalton	-	-	-	19,479	-	-	19,479
22 -13	PSS1E dx	SS	Dalton	-	-	-	642	-	-	642
22 -14	P SS/FO 1E	SS	Dalton	-	-	-	788	-	-	788
22 -15	P SS/FO 1E	SS	Dalton	-	-	-	-	620	-	620
22 -16	PSS1E dx	SS	Dalton	-	-	-	3,510	-	-	3,510
22 -17	PSS1E	SS	Dalton	-	-	-	1,705	-	-	1,705
22 -18	PFO1E	FO	Dalton	-	-	-	300	-	-	300
22 -19	PFO4/1E	FO	Dalton	-	-	-	1,362	-	-	1,362
22 -20	PFO1E	FO	Dalton	-	-	-	1,793	-	-	1,793
22 -21	PFO1/4E	FO	Dalton	-	-	-	1,859	-	-	1,859
22 -22	PSS1E	SS	Dalton	-	-	-	8,515	-	-	8,515
22 -23	P SS/FO 1E	SS	Dalton	-	-	-	3,318	-	-	3,318
22 -24	P SS/FO 1E	SS	Dalton	-	-	-	1,303	-	-	1,303
22 -25	PSS1E	SS	Dalton	-	-	-	28,061	-	-	28,061
22 -26	VP-5	VP	Dalton	-	-	-	1,056	-	-	1,056
22 -27	VP-4	VP	Dalton	-	-	-	338	-	-	338
22 -28	VP-3	VP	Dalton	-	-	-	900	-	-	900
23 -1	P SS/FO 1E	SS	Dalton	-	-	-	-	423	-	423
23 -2	P SS/FO 1E	SS	Dalton	-	-	-	286	-	-	286
23 -3	PSS1E dx	SS	Dalton	-	-	-	806	-	-	806
23 -4	PSS1E dx	SS	Dalton	-	-	-	108	-	-	108
23 -5	PSS1E dx	SS	Dalton	-	-	-	-	438	-	438
23 -6	PFO1E	FO	Dalton	-	-	-	-	1,099	-	1,099
23 -6A	R3UBH	R3	Dalton	34	-	34	89	-	-	89
23 -7	R3UBH	R3	Dalton	390	-	390	780	-	-	780
23 -7A	P EM/SS 1Exd	EM	Dalton	-	-	-	4,176	-	-	4,176
23 -8A	R3UBH	R3	Dalton	116	-	116	56	-	-	56
23 -8	PSS/FO1E	SS	Dalton	-	-	-	-	528	-	528
23 -9	P SS/FO 1/4E	SS	Dalton	-	-	-	-	661	-	661
23 -10	P SS/FO 1/4E	SS	Dalton	-	-	-	89	-	-	89
23 -11	R3UBH	R3	Dalton	171	-	171	37	-	-	37
23 -12	PFO1E	FO	Dalton	-	-	-	806	-	-	806
23 -13	PFO1E	FO	Dalton	-	-	-	-	778	-	778
27 -1	PFO1E	FO	Dalton	-	-	-	13,908	-	-	13,908
27 -2	PFO1E	FO	Dalton	-	-	-	9,672	-	-	9,672
27 -3	P EM/SS 1E	EM	Dalton	-	-	-	2,129	-	-	2,129
27 -4	PFO1E	FO	Dalton	-	-	-	368	-	-	368
31 -1	PSS1E	SS	Dalton	-	-	-	-	165	-	165
31 -2	P EM/SS 1Exd	EM	Dalton	-	-	-	1,374	-	-	1,374
31 -3	PFO1E	FO	Dalton	-	-	-	-	177	-	177
31 -4	PFO1E	FO	Dalton	-	-	-	13	-	-	13
31 -5	PSS1Exd	SS	Dalton	-	-	-	328	-	-	328
31 -6	PSS1E	SS	Dalton	-	-	-	299	-	-	299
31 -7	PSS1E	SS	Dalton	-	-	-	-	66	-	66
31 -8	P SS/FO 4/1E	SS	Dalton	-	-	-	67	-	-	67
32 -1	P SS/FO 4/1E	SS	Dalton	-	-	-	728	-	-	728
32 -2	P SS/FO 4/1E	SS	Dalton	-	-	-	-	863	-	863
32 -3	P SS/FO 4/1E	SS	Dalton	-	-	-	207	-	-	207
32 -4	P SS/FO 4/1E	SS	Dalton	-	-	-	904	-	-	904
32 -5	P SS/FO 4/1E	SS	Dalton	-	-	-	-	1,848	-	1,848
32 -6	P SS/FO 4/1E	SS	Dalton	-	-	-	62	-	-	62
32 -7	P SS/FO 4/1E	SS	Dalton	-	-	-	-	470	-	470
32 -8	P SS/FO 4/1E	SS	Dalton	-	-	-	-	404	-	404
33 -2	PFO1/4E	FO	Dalton	-	-	-	178	-	-	178
33 -3	PFO1/4E	FO	Dalton	-	-	-	-	835	-	835
33 -4	P EM/SS 1E	EM	Dalton	-	-	-	411	-	-	411
33 -5	P EM/SS 1E	EM	Dalton	-	-	-	-	1,130	-	1,130
33 -6	PFO1/4E	FO	Bethlehem	-	-	-	-	186	-	186
33 -7	PFO1/4E	FO	Bethlehem	-	-	-	11	-	-	11
33 -8	P SS/FO 1E	SS	Bethlehem	-	-	-	-	1,825	-	1,825
33 -9	P SS/FO 1E	SS	Bethlehem	-	-	-	1,343	-	-	1,343
33 -10	PSS1E	SS	Bethlehem	-	-	-	-	663	-	663
33 -11	PSS1E	SS	Bethlehem	-	-	-	268	-	-	268
33 -12	P SS/FO 1E	SS	Dalton	-	-	-	-	-	4,150	4,150
33 -13	PSS1E	SS	Bethlehem	-	-	-	-	-	2,270	2,270
34 -1	PSS1E	SS	Bethlehem	-	-	-	249	-	-	249
34 -1A	PSS1E	SS	Bethlehem	-	-	-	-	357	-	357
34 -2	PSS1E	SS	Bethlehem	-	-	-	75	-	-	75
34 -3	PSS1E	SS	Bethlehem	-	-	-	-	1,584	-	1,584
34 -4	PSS1E	SS	Bethlehem	-	-	-	212	-	-	212
34 -5	PSS1E	SS	Bethlehem	-	-	-	-	937	-	937
34 -6	P SS/FO 4E	SS	Bethlehem	-	-	-	-	1,496	-	1,496
34 -7	P SS/FO 4E	SS	Bethlehem	-	-	-	1,070	-	-	1,070
34 -8	PFO4E	FO	Bethlehem	-	-	-	-	1,683	-	1,683
34 -9	PFO4E	FO	Bethlehem	-	-	-	740	-	-	740
34 -10	PSS1E	SS	Bethlehem	-	-	-	-	-	12,857	12,857
34 -11	PFO4E	FO	Bethlehem	-	-	-	-	-	6,489	6,489
35 -1	PEM1Exd	EM	Bethlehem	-	-	-	78	-	-	78
35 -2	R4UBJ	R4	Bethlehem	24	-	24	24	-	-	24
35 2A	PFO1E	FO	Bethlehem	-	-	-	97	-	-	97
35 -4	PFO4Ed	FO	Bethlehem	-	-	-	-	111	-	111
35 -5	PFO4Ed	FO	Bethlehem	-	-	-	109	-	-	109
35 -6	PSS1Ex	SS	Bethlehem	-	-	-	50	-	-	50
35 -7	R3UBH	R3	Bethlehem	198	-	198	132	-	-	132
35 -8	P SS/FO 1E	SS	Bethlehem	-	-	-	2,235	-	-	2,235

Table 1 - Summary of Wetland Impacts by Cover Type and Town
 Granite State Landfill, LLC
 Dalton, New Hampshire

Impact - Number	Cover Type	Cover Type 2	Town	Impacted Stream Length (Linear Feet)			Impacted Surface Area (Square Feet)			
				Permanent	After-the-Fact	Total	Permanent	Temporary	After-the-Fact	Total
-	-	-	-	-	-	-	-	-	-	-
35 -3	PSS1E	SS	Bethlehem	-	-	-	-	-	767	767
36 -1	P EM/FO 1E	EM	Bethlehem	-	-	-	290	-	-	290

Totals By Type / Town (LF and SF)								
Cover Type	Town	Impacted Stream Length			Impacted Surface Area			
		Permanent	After-the-Fact	Total	Permanent	Temporary	After-the-Fact	Total
FO	Dalton	-	-	-	225,392	3,577	3,791	232,760
FO	Bethlehem	-	-	-	957	1,980	6,489	9,426
FO	Total	-	-	-	226,349	5,557	10,280	242,186
SS	Dalton	-	-	-	153,942	7,646	6,900	168,488
SS	Bethlehem	-	-	-	5,502	6,862	15,894	28,258
SS	Total	-	-	-	159,444	14,508	22,794	196,746
EM	Dalton	-	-	-	52,330	1,239	3,652	57,221
EM	Bethlehem	-	-	-	368	-	-	368
EM	Total	-	-	-	52,698	1,239	3,652	57,589
VP	Dalton	-	-	-	2,294	-	-	2,294
VP	Bethlehem	-	-	-	-	-	-	-
VP	Total	-	-	-	2,294	0	0	2,294
R3	Dalton	711	180	891	962	-	115	1,077
R3	Bethlehem	198	-	198	132	-	-	132
R3	Total	909	180	1089	1,094	0	115	1,209
R4	Dalton	932	50	982	1,864	-	55	1,919
R4	Bethlehem	24	-	24	24	-	-	24
R4	Total	956	50	1006	1,888	0	55	1,943
Total - Dalton		1,643	230	1,873	436,784	12,462	14,513	463,759
Total - Bethlehem		222	-	222	6,983	8,842	22,383	38,208
Total - Impact Type		1,865	230	2,095	443,767	21,304	36,896	501,967

Totals By Type / Town (LF and Acres)								
Cover Type	Town	Impacted Stream Length			Impacted Surface Area			
		Permanent	After-the-Fact	Total	Permanent	Temporary	After-the-Fact	Total
FO	Dalton	-	-	-	5.17	0.08	0.09	5.34
FO	Bethlehem	-	-	-	0.02	0.05	0.15	0.22
FO	Total	-	-	-	5.20	0.13	0.24	5.56
SS	Dalton	-	-	-	3.53	0.18	0.16	3.87
SS	Bethlehem	-	-	-	0.13	0.16	0.36	0.65
SS	Total	-	-	-	3.66	0.33	0.52	4.52
EM	Dalton	-	-	-	1.20	0.03	0.08	1.31
EM	Bethlehem	-	-	-	0.01	-	-	0.01
EM	Total	-	-	-	1.21	0.03	0.08	1.32
VP	Dalton	-	-	-	0.05	-	-	0.05
VP	Bethlehem	-	-	-	-	-	-	-
VP	Total	-	-	-	0.05	0.00	0.00	0.05
R3	Dalton	711	180	891	0.02	-	0.00	0.02
R3	Bethlehem	198	-	198	0.00	-	-	0.00
R3	Total	909	180	1,089	0.03	0.00	0.00	0.03
R4	Dalton	932	50	982	0.04	-	0.00	0.04
R4	Bethlehem	24	-	24	0.00	-	-	0.00
R4	Total	956	50	1,006	0.04	0.00	0.00	0.04
Total - Dalton		1,643	230	1,873	10.03	0.29	0.33	10.65
Total - Bethlehem		222	-	222	0.16	0.20	0.51	0.88
Total - Impact Type		1,865	230	2,095	10.19	0.49	0.85	11.52

Notes:

- Impact numbers refer to the sheets and impacts in the Wetland Impact Plans; refer to Wetland Impact Plans for additional information and notes.
- Abbreviations: FO = Forested, SS = Scrub-Shrub, EM = Emergent, VP = Vernal Pool, R3 = Perennial Stream, R4 = Intermittent Stream, LF = linear feet, SF = square feet

Table 2 - Summary of Wetland Impacts by Cover Type and Town - December 2023 and February 2024 Comparison
 Granite State Landfill, LLC
 Dalton, New Hampshire

Impact - Number	Cover Type	Cover Type 2	Town	December 2023			Impacted Surface Area (Square Feet)				Comments
				Impacted Stream Length (Linear Feet)			Permanent	Temporary	After-the-Fact	Total	
				Intermittent	Perennial	Total					
1-1	PFO1E	FO	Dalton	-	-	0	-	-	1,120	1,120	
1-2	New Impact ID Assigned in February 2024										
2-1	PEM1E	EM	Dalton	-	-	0	-	-	1,448	1,448	
2-1A	New Impact ID Assigned in February 2024										
2-2	PEM1E	EM	Dalton	-	-	0	-	-	2,309	2,309	
2-2A	New Impact ID Assigned in February 2024										
2-3	PFO1E	FO	Dalton	-	-	0	-	-	2,380	2,380	
2-4	P SS/FO 1E	SS	Dalton	-	-	0	-	-	2,775	2,775	
2-5	New Impact ID Assigned in February 2024										
8-1	PSS1Ex	SS	Dalton	-	-	0	111	-	-	111	
8-2	PFO1E	FO	Dalton	-	-	0	44	-	-	44	
8-3	PFO1E	FO	Dalton	-	-	0	-	122	-	122	
8-4	PSS1Edx	SS	Dalton	-	-	0	-	416	-	416	
8-5	PSS1Edx	SS	Dalton	-	-	0	1,649	-	-	1,649	
8-6	PFO1E	FO	Dalton	-	-	0	124	-	-	124	
8-7	PFO1E	FO	Dalton	-	-	0	-	516	-	516	
8-8	P SS/FO 1E	SS	Dalton	-	-	0	-	48	-	48	
8-9	PSS1Ex	SS	Dalton	-	-	0	-	65	-	65	
8-10	PSS1Edx	SS	Dalton	-	-	0	-	186	-	186	
9-1	P SS/FO 1E	SS	Dalton	-	-	0	-	24	-	24	
9-2	P SS/FO 1E	SS	Dalton	-	-	0	1,627	-	-	1,627	
13-1	PFO1E/R4UBJ	FO	Dalton	932	-	932	29,584	-	-	29,584	
13-2	New Impact ID Assigned in February 2024										
13-3	PFO1E	FO	Dalton	-	-	0	7,686	-	-	7,686	
13-4	PFO1E	FO	Dalton	-	-	0	-	-	331	331	
19-1	PFO1E	FO	Dalton	-	-	0	1,126	-	-	1,126	
19-2	PFO1E	FO	Dalton	-	-	0	622	-	-	622	
19-2A	PFO1E	FO	Dalton	-	-	0	-	50	-	50	
19-3	PFO1E	FO	Dalton	-	-	0	92	-	-	92	
19-4	PFO1E	FO	Dalton	-	-	0	140	-	-	140	
19-5	PFO1E	FO	Dalton	-	-	0	2,441	-	-	2,441	
19-6	PFO1E	FO	Dalton	-	-	0	2,111	-	-	2,111	
19-7	PFO1E	FO	Dalton	-	-	0	116	-	-	116	
20-1	Impact ID Number Not Used										
20-2	PFO1E	FO	Dalton	-	-	0	1,771	-	-	1,771	
20-3	PFO1E	FO	Dalton	-	-	0	359	-	-	359	
20-4	PFO1E	FO	Dalton	-	-	0	3,539	-	-	3,539	
20-5	PSS1E	SS	Dalton	-	-	0	3,443	-	-	3,443	
20-6	PSS1E	SS	Dalton	-	-	0	2,742	-	-	2,742	
20-7	PFO1E/4E	FO	Dalton	-	-	0	24,695	-	-	24,695	
20-8	PFO1E	FO	Dalton	-	-	0	1,717	-	-	1,717	
20-9	PFO1E	FO	Dalton	-	-	0	3,320	-	-	3,320	
20-10	PFO1E	FO	Dalton	-	-	0	798	-	-	798	
20-11	PFO1E	FO	Dalton	-	-	0	2,189	-	-	2,189	
21-1	PSS1Edx	SS	Dalton	-	-	0	-	94	-	94	
21-1A	PSS1Edx	SS	Dalton	-	-	0	1,451	-	-	1,451	
21-2	PFO1E	FO	Dalton	-	-	0	6,078	-	-	6,078	
21-3	PSS1E	SS	Dalton	-	-	0	995	-	-	995	
21-4	PFO1E	FO	Dalton	-	-	0	13,529	-	-	13,529	
21-5	PEM1Edx	EM	Dalton	-	-	0	204	-	-	204	
21-6	DITCH Pem1xd	EM	Dalton	-	-	0	1,048	-	-	1,048	
21-7	PFO1E	FO	Dalton	-	-	0	4,510	-	-	4,510	
21-8	P SS/FO 1E	SS	Dalton	-	-	0	8,697	-	-	8,697	
21-9	PFO1/4E	FO	Dalton	-	-	0	4,840	-	-	4,840	
21-10	P EM/SS /FO 1/4E	EM	Dalton	-	-	0	6,411	-	-	6,411	
21-11	P EM/SS 1E	EM	Dalton	-	-	0	7,634	-	-	7,634	
21-12	PFO1E	FO	Dalton	-	-	0	559	-	-	559	
21-13	PSS1E	SS	Dalton	-	-	0	1,459	-	-	1,459	
21-14	PSS1E	SS	Dalton	-	-	0	2,524	-	-	2,524	
21-15	PSS1E	SS	Dalton	-	-	0	3,768	-	-	3,768	
21-16	PFO1E	FO	Dalton	-	-	0	4,864	-	-	4,864	
21-17	PSS1E	SS	Dalton	-	-	0	1,312	-	-	1,312	
21-18	PFO1/4E	FO	Dalton	-	-	0	8,883	-	-	8,883	
21-19	PFO1E	FO	Dalton	-	-	0	25,853	-	-	25,853	
21-20	P EM/SS / FO 1/4E	EM	Dalton	-	-	0	12,489	-	-	12,489	
21-21	PFO1E	FO	Dalton	-	-	0	573	-	-	573	
21-22	PFO1E	FO	Dalton	-	-	0	7,730	-	-	7,730	
21-23	PFO1/4E	FO	Dalton	-	-	0	3,198	-	-	3,198	
21-24	PSS1E	SS	Dalton	-	-	0	17,153	-	-	17,153	
21-25	PFO1E	FO	Dalton	-	-	0	3,810	-	-	3,810	
21-26	PFO1E	FO	Dalton	-	-	0	1,832	-	-	1,832	
21-27	P EM/SS 1E	EM	Dalton	-	-	0	5,626	-	-	5,626	
21-28	PSS1E	SS	Dalton	-	-	0	22,767	-	-	22,767	
21-29	P SS/FO 1/4E	SS	Dalton	-	-	0	13,768	-	-	13,768	
21-30	PSS1Edx	SS	Dalton	-	-	0	793	-	-	793	
21-31	PSS1Edx	SS	Dalton	-	-	0	-	204	-	204	
21-32	P EM/FO 1	EM	Dalton	-	-	0	9,991	-	-	9,991	
21-33	PSS1E	SS	Dalton	-	-	0	834	-	-	834	
21-34	PFO1E	FO	Dalton	-	-	0	146	-	-	146	

Impact - Number	Cover Type	Cover Type 2	Town	February 2024			Impacted Surface Area (Square Feet)				Comments
				Impacted Stream Length (Linear Feet)			Permanent	Temporary	After-the-Fact	Total	
				Permanent	After-the-Fact	Total					
1-1	PFO1E	FO	Dalton	-	-	-	-	-	1,080	1,080	Reassigned a portion of the impacted surface area from a wetland to stream category. Added After-the-Fact length of stream impacts.
1-2	R3UBH	R3	Dalton	-	120	120	-	-	40	40	
2-1	PEM1E	EM	Dalton	-	-	-	-	-	1,418	1,418	Reassigned a portion of the impacted surface area from a wetland to stream category. Added After-the-Fact length of stream impacts.
2-1A	R4UBJ	R4	Dalton	-	30	30	-	-	30	30	
2-2	PEM1E	EM	Dalton	-	-	-	-	-	2,234	2,234	Reassigned a portion of the impacted surface area from a wetland to stream category. Added After-the-Fact length of stream impacts.
2-2A	R3UBH	R3	Dalton	-	60	60	-	-	75	75	
2-3	PFO1E	FO	Dalton	-	-	-	-	-	2,380	2,380	
2-4	P SS/FO 1E	SS	Dalton	-	-	-	-	-	2,750	2,750	Reassigned a portion of the impacted surface area from a wetland to stream category. Added After-the-Fact length of stream impacts.
2-5	R4UBJ	R4	Dalton	-	20	20	-	-	25	25	
8-1	PSS1Ex	SS	Dalton	-	-	-	111	-	-	111	
8-2	PFO1E	FO	Dalton	-	-	-	44	-	-	44	
8-3	PFO1E	FO	Dalton	-	-	-	-	122	-	122	
8-4	PSS1Edx	SS	Dalton	-	-	-	-	416	-	416	
8-5	PSS1Edx	SS	Dalton	-	-	-	1,649	-	-	1,649	
8-6	PFO1E	FO	Dalton	-	-	-	124	-	-	124	
8-7	PFO1E	FO	Dalton	-	-	-	-	516	-	516	
8-8	P SS/FO 1E	SS	Dalton	-	-	-	-	48	-	48	
8-9	PSS1Ex	SS	Dalton	-	-	-	-	65	-	65	
8-10	PSS1Edx	SS	Dalton	-	-	-	-	186	-	186	Revised cover type description (removed ditch)
9-1	P SS/FO 1E	SS	Dalton	-	-	-	-	24	-	24	
9-2	P SS/FO 1E	SS	Dalton	-	-	-	1,627	-	-	1,627	
13-1	PFO1E/R4UBJ	FO	Dalton	932	-	932	1,864	-	-	1,864	Reassigned a portion of the impacted surface area from a wetland to stream category
13-2	PFO1E	FO	Dalton	-	-	-	27,720	-	-	27,720	
13-3	PFO1E	FO	Dalton	-	-	-	7,686	-	-	7,686	
13-4	PFO1E	FO	Dalton	-	-	-	-	-	331	331	
19-1	PFO1E	FO	Dalton	-	-	-	1,126	-	-	1,126	
19-2	PFO1E	FO	Dalton	-	-	-	622	-	-	622	
19-2A	PFO1E	FO	Dalton	-	-	-	-	50	-	50	
19-3	PFO1E	FO	Dalton	-	-	-	92	-	-	92	
19-4	PFO1E	FO	Dalton	-	-	-	140	-	-	140	
19-5	PFO1E	FO	Dalton	-	-	-	2,441	-	-	2,441	
19-6	PFO1E	FO	Dalton	-	-	-	2,111	-	-	2,111	
19-7	PFO1E	FO	Dalton	-	-	-	116	-	-	116	
20-1	# not used	-	Dalton	-	-	-	-	-	-	-	Impact ID number not used.
20-2	PFO1E	FO	Dalton	-	-	-	1,771	-	-	1,771	
20-3	PFO1E	FO	Dalton	-	-	-	359	-	-	359	
20-4	PFO1E	FO	Dalton	-	-	-	3,539	-	-	3,539	
20-5	PSS1E	SS	Dalton	-	-	-	3,443	-	-	3,443	
20-6	PSS1E	SS	Dalton	-	-	-	2,742	-	-	2,742	
20-7	PFO1E/4E	FO	Dalton	-	-	-	24,695	-	-	24,695	
20-8	PFO1E	FO	Dalton	-	-	-	1,717	-	-	1,717	
20-9	PFO1E	FO	Dalton	-	-	-	3,320	-	-	3,320	
20-10	PFO1E	FO	Dalton	-	-	-	798	-	-	798	
20-11	PFO1E	FO	Dalton	-	-	-	2,189	-	-	2,189	

Table 2 - Summary of Wetland Impacts by Cover Type and Town - December 2023 and February 2024 Comparison
 Granite State Landfill, LLC
 Dalton, New Hampshire

Impact - Number	Cover Type	Cover Type 2	Town	December 2023			February 2024				Comments
				Impacted Stream Length (Linear Feet)			Impacted Surface Area (Square Feet)				
				Intermittent	Perennial	Total	Permanent	Temporary	After-the-Fact	Total	
22 -1A	P EM/FO 1	EM	Dalton	-	-	0	-	109	-	109	
22 -1B	PSS1E dx	SS	Dalton	-	-	0	-	123	-	123	
22 -2	PSS1E dx	SS	Dalton	-	-	0	836	-	-	836	
22 -4	PFO1E	FO	Dalton	-	-	0	3,663	-	-	3,663	
22 -5	P SS/FO 1E	SS	Dalton	-	-	0	2,990	-	-	2,990	
22 -6	PFO1E	FO	Dalton	-	-	0	3,223	-	-	3,223	
22 -7	PSS1E	SS	Dalton	-	-	0	13,297	-	-	13,297	
22 -8	PFO1E	FO	Dalton	-	-	0	1,362	-	-	1,362	
22 -9	PFO1E	FO	Dalton	-	-	0	187	-	-	187	
22 -10	PFO1E	FO	Dalton	-	-	0	204	-	-	204	
22 -11	P EM/SS E	EM	Dalton	-	-	0	837	-	-	837	
22 -12	PFO1E	FO	Dalton	-	-	0	19,479	-	-	19,479	
22 -13	PSS1E dx	SS	Dalton	-	-	0	642	-	-	642	
22 -14	P SS/FO 1E	SS	Dalton	-	-	0	788	-	-	788	
22 -15	P SS/FO 1E	SS	Dalton	-	-	0	-	620	-	620	
22 -16	PSS1E dx	SS	Dalton	-	-	0	3,510	-	-	3,510	
22 -17	PSS1E	SS	Dalton	-	-	0	1,705	-	-	1,705	
22 -18	PFO1E	FO	Dalton	-	-	0	300	-	-	300	
22 -19	PFO1/4E	FO	Dalton	-	-	0	1,362	-	-	1,362	
22 -20	PFO1E	FO	Dalton	-	-	0	1,793	-	-	1,793	
22 -21	PFO1/4E	FO	Dalton	-	-	0	1,859	-	-	1,859	
22 -22	PSS1E	SS	Dalton	-	-	0	8,515	-	-	8,515	
22 -23	P SS/FO 1E	SS	Dalton	-	-	0	3,318	-	-	3,318	
22 -24	P SS/FO 1E	SS	Dalton	-	-	0	1,303	-	-	1,303	
22 -25	PSS1E	SS	Dalton	-	-	0	28,061	-	-	28,061	
22 -26	VP-5	VP	Dalton	-	-	0	1,056	-	-	1,056	
22 -27	VP-4	VP	Dalton	-	-	0	338	-	-	338	
22 -28	VP-3	VP	Dalton	-	-	0	900	-	-	900	
23 -1	P SS/FO 1E	SS	Dalton	-	-	0	-	423	-	423	
23 -2	P SS/FO 1E	SS	Dalton	-	-	0	286	-	-	286	
23 -3	PSS1E dx	SS	Dalton	-	-	0	806	-	-	806	
23 -4	PSS1E dx	SS	Dalton	-	-	0	108	-	-	108	
23 -5	PSS1E dx	SS	Dalton	-	-	0	-	438	-	438	
23 -6	PFO1E	FO	Dalton	-	-	0	-	1,099	-	1,099	
23 -6A	R3UBH, PFO1E	FO	Dalton	-	34	34	89	-	-	89	Revised impact classification type from wetland to stream
23 -7	P EM/SS 1Exd/R3UBH	EM	Dalton	-	390	390	4,956	-	-	4,956	Reassigned a portion of the impacted surface area from a wetland to stream category. Impacted surface area and length of stream reassigned from 23-7A to 23-8A. A portion of the impacted surface area redistributed from 23-7 to 23-7A.
23 -7A	R3UBH, PFO1E	FO	Dalton	-	116	116	56	-	-	56	
23 -8A	New Impact ID Assigned in February 2024										
23 -8	P SS/FO1E	SS	Dalton	-	-	0	-	528	-	528	
23 -9	P SS/FO 1/4E	SS	Dalton	-	-	0	-	661	-	661	
23 -10	P SS/FO 1/4E	SS	Dalton	-	-	0	89	-	-	89	
23 -11	R3UBH, PFO1E	FO	Dalton	-	171	171	37	-	-	37	Revised impact classification type from wetland to stream
23 -12	PFO1E	FO	Dalton	-	-	0	806	-	-	806	
23 -13	PFO1E	FO	Dalton	-	-	0	-	778	-	778	
27 -1	PFO1E	FO	Dalton	-	-	0	13,908	-	-	13,908	
27 -2	PFO1E	FO	Dalton	-	-	0	9,672	-	-	9,672	
27 -3	P EM/SS 1E	EM	Dalton	-	-	0	2,129	-	-	2,129	
27 -4	PFO1E	FO	Dalton	-	-	0	368	-	-	368	
31 -1	PSS1E	SS	Dalton	-	-	0	165	-	-	165	
31 -2	P EM/SS 1Exd	EM	Dalton	-	-	0	1,374	-	-	1,374	
31 -3	PFO1E	FO	Dalton	-	-	0	-	177	-	177	
31 -4	PFO1E	FO	Dalton	-	-	0	13	-	-	13	
31 -5	PSS1Exd	SS	Dalton	-	-	0	328	-	-	328	
31 -6	PSS1E	SS	Dalton	-	-	0	299	-	-	299	
31 -7	PSS1E	SS	Dalton	-	-	0	-	66	-	66	
31 -8	P SS/FO 4/1E	SS	Dalton	-	-	0	67	-	-	67	
32 -1	P SS/FO 4/1E	SS	Dalton	-	-	0	728	-	-	728	
32 -2	P SS/FO 4/1E	SS	Dalton	-	-	0	-	863	-	863	
32 -3	P SS/FO 4/1E	SS	Dalton	-	-	0	207	-	-	207	
32 -4	P SS/FO 4/1E	SS	Dalton	-	-	0	904	-	-	904	
32 -5	P SS/FO 4/1E	SS	Dalton	-	-	0	-	1,848	-	1,848	
32 -6	P SS/FO 4/1E	SS	Dalton	-	-	0	62	-	-	62	
32 -7	P SS/FO 4/1E	SS	Dalton	-	-	0	-	470	-	470	
32 -8	P SS/FO 4/1E	SS	Dalton	-	-	0	-	404	-	404	
33 -2	PFO1/4E	FO	Dalton	-	-	0	178	-	-	178	
33 -3	PFO1/4E	FO	Dalton	-	-	0	-	835	-	835	
33 -4	P EM/SS 1E	EM	Dalton	-	-	0	411	-	-	411	
33 -5	P EM/SS 1E	EM	Dalton	-	-	0	-	1,130	-	1,130	
33 -6	PFO1/4E	FO	Bethlehem	-	-	0	-	186	-	186	
33 -7	PFO1/4E	FO	Bethlehem	-	-	0	11	-	-	11	
33 -8	P SS/FO 1E	SS	Bethlehem	-	-	0	-	1,825	-	1,825	
33 -9	P SS/FO 1E	SS	Bethlehem	-	-	0	1,343	-	-	1,343	
33 -10	PSS1E	SS	Bethlehem	-	-	0	-	663	-	663	
33 -11	PSS1E	SS	Bethlehem	-	-	0	268	-	-	268	
33 -12	P SS/FO 1E	SS	Dalton	-	-	0	-	-	4,150	4,150	
33 -13	PSS1E	SS	Bethlehem	-	-	0	-	-	-	2,270	2,270

Table 2 - Summary of Wetland Impacts by Cover Type and Town - December 2023 and February 2024 Comparison
Granite State Landfill, LLC
Dalton, New Hampshire

Impact - Number	Cover Type	Cover Type 2	Town	Impacted Stream Length (Linear Feet)			Impacted Surface Area (Square Feet)			
				Intermittent	Perennial	Total	Permanent	Temporary	After-the-Fact	Total
				34-1	PSS1E	SS	Bethlehem	-	-	0
34-1A	PSS1E	SS	Bethlehem	-	-	0	-	357	-	357
34-2	PSS1E	SS	Bethlehem	-	-	0	75	-	-	75
34-3	PSS1E	SS	Bethlehem	-	-	0	-	1,584	-	1,584
34-4	PSS1E	SS	Bethlehem	-	-	0	212	-	-	212
34-5	PSS1E	SS	Bethlehem	-	-	0	-	937	-	937
34-6	P SS/FO 4E	SS	Bethlehem	-	-	0	-	1,496	-	1,496
34-7	P SS/FO 4E	SS	Bethlehem	-	-	0	1,070	-	-	1,070
34-8	PFO4E	FO	Bethlehem	-	-	0	-	1,683	-	1,683
34-9	PFO4E	FO	Bethlehem	-	-	0	740	-	-	740
34-10	PSS1E	SS	Bethlehem	-	-	0	-	-	12,857	12,857
34-11	PFO4E	FO	Bethlehem	-	-	0	-	-	6,489	6,489
35-1	PEM1Exd	EM	Bethlehem	-	-	0	78	-	-	78
35-2	R4UBJ, PFO1E	FO	Bethlehem	24	-	24	121	-	-	121
35-2A	New Impact ID Assigned in February 2024									
35-4	PFO4Ed	FO	Bethlehem	-	-	0	-	111	-	111
35-5	PFO4Ed	FO	Bethlehem	-	-	0	109	-	-	109
35-6	PSS1Ex	SS	Bethlehem	-	-	0	50	-	-	50
35-7	New Impact ID Assigned in February 2024									
35-8	P SS/FO 1E	SS	Bethlehem	-	-	0	2,367	-	-	2,367
35-9	R3UBH, P SS/FO 4E	SS	Bethlehem	-	198	198	-	-	-	0
35-3	PSS1E	SS	Bethlehem	-	-	0	-	-	767	767
36-1	P EM/FO 1E	EM	Bethlehem	-	-	0	290	-	-	290

Impact - Number	Cover Type	Cover Type 2	Town	Impacted Stream Length (Linear Feet)			Impacted Surface Area (Square Feet)				Comments
				Permanent	After-the-Fact	Total	Permanent	Temporary	After-the-Fact	Total	
				34-1	PSS1E	SS	Bethlehem	-	-	-	
34-1A	PSS1E	SS	Bethlehem	-	-	-	-	357	-	357	
34-2	PSS1E	SS	Bethlehem	-	-	-	75	-	-	75	
34-3	PSS1E	SS	Bethlehem	-	-	-	-	1,584	-	1,584	
34-4	PSS1E	SS	Bethlehem	-	-	-	212	-	-	212	
34-5	PSS1E	SS	Bethlehem	-	-	-	-	937	-	937	
34-6	P SS/FO 4E	SS	Bethlehem	-	-	-	-	1,496	-	1,496	
34-7	P SS/FO 4E	SS	Bethlehem	-	-	-	1,070	-	-	1,070	
34-8	PFO4E	FO	Bethlehem	-	-	-	-	1,683	-	1,683	
34-9	PFO4E	FO	Bethlehem	-	-	-	740	-	-	740	
34-10	PSS1E	SS	Bethlehem	-	-	-	-	-	12,857	12,857	
34-11	PFO4E	FO	Bethlehem	-	-	-	-	-	6,489	6,489	
35-1	PEM1Exd	EM	Bethlehem	-	-	-	78	-	-	78	
35-2	R4UBJ	R4	Bethlehem	24	-	24	24	-	-	24	Reassigned a portion of the impacted surface area from a wetland to stream category
35-2A	PFO1E	FO	Bethlehem	-	-	-	97	-	-	97	
35-4	PFO4Ed	FO	Bethlehem	-	-	-	-	111	-	111	
35-5	PFO4Ed	FO	Bethlehem	-	-	-	109	-	-	109	
35-6	PSS1Ex	SS	Bethlehem	-	-	-	50	-	-	50	
35-7	R3UBH	R3	Bethlehem	198	-	198	132	-	-	132	Reassigned a portion of the impacted surface area from a wetland to stream category. Reassigned length of stream
35-8	P SS/FO 1E	SS	Bethlehem	-	-	-	2,235	-	-	2,235	Impact ID removed (impacts redistributed to impact IDs 35-7 and 35-8)
35-3	PSS1E	SS	Bethlehem	-	-	-	-	-	767	767	
36-1	P EM/FO 1E	EM	Bethlehem	-	-	-	290	-	-	290	

Totals By Type / Town (SF)								
Primary Cover Type	Town	Impacted Stream Length (Linear Feet)			Impacted Surface Area (Square Feet)			
		Intermittent	Perennial	Total	Permanent	Temporary	After-the-Fact	Total
FO	Dalton	-	-	-	227,438	3,577	3,831	234,846
FO	Bethlehem	-	-	-	981	1,980	6,489	9,450
FO	Total	-	-	-	228,419	5,557	10,320	244,296
SS	Dalton	-	-	-	153,942	7,646	6,925	168,513
SS	Bethlehem	-	-	-	5,634	6,862	15,894	28,390
SS	Total	-	-	-	159,576	14,508	22,819	196,903
EM	Dalton	-	-	-	53,110	1,239	3,757	58,106
EM	Bethlehem	-	-	-	368	0	0	368
EM	Total	-	-	-	53,478	1,239	3,757	58,474
VP	Dalton	-	-	-	2,294	0	0	2,294
VP	Bethlehem	-	-	-	0	0	0	0
VP	Total	-	-	-	2,294	0	0	2,294
-	-	-	-	-	-	-	-	-
-	-	-	-	-	-	-	-	-
-	-	-	-	-	-	-	-	-
-	-	-	-	-	-	-	-	-
Total - Dalton		932	711	1,643	436,784	12,462	14,513	463,759
Total - Bethlehem		24	198	222	6,983	8,842	22,383	38,208
Total - By Type		956	909	1,865	443,767	21,304	36,896	501,967

Totals By Type / Town (LF and Acres)								
Cover Type	Town	Impacted Stream Length (Linear Feet)			Impacted Surface Area (Square Feet)			
		Intermittent	Perennial	Total	Permanent	Temporary	After-the-Fact	Total
FO	Dalton	-	-	-	5.22	0.08	0.09	5.39
FO	Bethlehem	-	-	-	0.02	0.05	0.15	0.22
FO	Total	-	-	-	5.24	0.13	0.24	5.61
SS	Dalton	-	-	-	3.53	0.18	0.16	3.87
SS	Bethlehem	-	-	-	0.13	0.16	0.36	0.65
SS	Total	-	-	-	3.66	0.33	0.52	4.52
EM	Dalton	-	-	-	1.22	0.03	0.09	1.33
EM	Bethlehem	-	-	-	0.01	0.00	0.00	0.01
EM	Total	-	-	-	1.23	0.03	0.09	1.34
VP	Dalton	-	-	-	0.05	0.00	0.00	0.05
VP	Bethlehem	-	-	-	0.00	0.00	0.00	0.00
VP	Total	-	-	-	0.05	0.00	0.00	0.05
-	-	-	-	-	-	-	-	-
-	-	-	-	-	-	-	-	-
-	-	-	-	-	-	-	-	-
-	-	-	-	-	-	-	-	-
Total - Dalton		932	711	1,643	10.03	0.29	0.33	10.65
Total - Bethlehem		24	198	222	0.16	0.20	0.51	0.88
Total - By Type		956	909	1,865	10.19	0.49	0.85	11.52

Totals By Type / Town (LF and SF)								
Cover Type	Town	Impacted Stream Length			Impacted Surface Area			
		Permanent	After-the-Fact	Total	Permanent	Temporary	After-the-Fact	Total
FO	Dalton	-	-	-	225,392	3,577	3,791	232,760
FO	Bethlehem	-	-	-	957	1,980	6,489	9,426
FO	Total	-	-	-	226,349	5,557	10,280	242,186
SS	Dalton	-	-	-	153,942	7,646	6,900	168,488
SS	Bethlehem	-	-	-	5,502	6,862	15,894	28,258
SS	Total	-	-	-	159,444	14,508	22,794	196,746
EM	Dalton	-	-	-	52,330	1,239	3,652	57,221
EM	Bethlehem	-	-	-	368	0	0	368
EM	Total	-	-	-	52,698	1,239	3,652	57,589
VP	Dalton	-	-	-	2,294	-	-	2,294
VP	Bethlehem	-	-	-	-	-	-	-
VP	Total	-	-	-	2,294	0	0	2,294
R3	Dalton	711	180	891	962	-	115	1,077
R3	Bethlehem	198	-	198	132	-	-	132
R3	Total	909	180	1,089	1,094	0	115	1,209
R4	Dalton	932	50	982	1,864	-	55	1,919
R4	Bethlehem	24	-	24	24	-	-	24
R4	Total	956	50	1,006	1,888	0	55	1,943
Total - Dalton		1,643	230	1,873	436,784	12,462	14,513	463,759
Total - Bethlehem		222	-	222	6,983	8,842	22,383	38,208
Total - Impact Type		1,865	230	2,095	443,767	21,304	36,896	501,967

Totals By Type / Town (LF and Acres)								
Cover Type	Town	Impacted Stream Length			Impacted Surface Area			
		Permanent	After-the-Fact	Total	Permanent	Temporary	After-the-Fact	Total
FO	Dalton	-	-	-	5.17	0.08	0.09	5.34
FO	Bethlehem	-	-	-	0.02	0.05	0.15	0.22
FO	Total	-	-	-	5.20	0.13	0.24	5.56
SS	Dalton	-	-	-	3.53	0.18	0.16	3.87
SS	Bethlehem	-	-	-	0.13	0.16	0.36	0.65
SS	Total	-	-	-	3.66	0.33	0.52	4.52
EM	Dalton	-	-	-	1.20	0.03	0.08	1.31
EM	Bethlehem	-	-	-	0.01	-	-	0.01
EM	Total	-	-	-	1.21	0.03	0.08	1.32
VP	Dalton	-	-	-	0.05	-	-	0.05
VP	Bethlehem	-	-	-	-	-	-	-
VP	Total	-	-	-	0.05	0.00	0.00	0.05
R3	Dalton	711	180	891	0.02	-	0.00	0.02
R3	Bethlehem	198	-	198	0.00	-	-	0.00
R3	Total	909	180	1,089	0.03	0.00	0.00	0.03
R4	Dalton	932	50	982	0.04	-	0.00	0.04
R4	Bethlehem	24	-	24	0.00	-	-	0.00
R4	Total	956	50	1,006	<			

Attachment 5

Photograph Log

Photograph Log

This attachment includes dated and labeled colored photographs of each proposed jurisdictional wetland impact area. The photographs are intended to be representative of the conditions in each impact area. Photographs are provided for each wetland impact identification number (ID) based on the Wetland Impact Plans prepared by Horizons Engineering of Littleton, New Hampshire included in Section 14.3 of the application (also summarized in Table 8.1 of Section 8 of the application). Wetland impact IDs are referenced by sheet number followed by impact ID (e.g., 21-1 indicates Sheet 21 Impact Number 1). The wetland impact IDs include proposed permanent, temporary, and after-the-fact impacted areas. Photographs and location information were collected by Sanborn Head personnel using ArcGIS Field Maps¹ on January 3 and 4, 2024. Photograph locations are approximate with reported accuracy ranging from 10 to 20 feet based on the ArcGIS Field Map application.

Two figures that identify the location of each photograph and a table of coordinates for each photograph location are provided as Figure 1 (Landfill Area) and Figure 2 (Roadway and Infrastructure Area).

Table 1 provides a summary of location IDs, corresponding wetland impact IDs, and coordinates for each photograph location.

Encl.

Photograph Log

Figure 1 – Photograph Locations (Landfill Area)

Figure 2 – Photograph Locations (Roadway)

Table 1 – Wetland Photograph Location Coordinates

P:\1000s\1003.26\Source Files\Wetlands\202401 DES Response Ltr\Photo Log Cvr.docx

¹ <https://www.arcgis.com/apps/fieldmaps/>; App Version 23.3.0

Photograph Log



Photo 1. Location Number: 1 | Impact Areas: 1-1 (ATF) | Capture Date: 1/3/2024



Photo 2. Location Number: 1 | Impact Areas: 1-1 (ATF) | Capture Date: 1/3/2024



Photo 3. Location Number: 2 | Impact Areas: 2-1 (ATF) | Capture Date: 1/3/2024



Photo 4. Location Number: 2 | Impact Areas: 2-1 (ATF) | Capture Date: 1/3/2024



Photo 5. Location Number: 3 | Impact Areas: 2-2 (ATF) | Capture Date: 1/3/2024



Photo 6. Location Number: 3 | Impact Areas: 2-2 (ATF) | Capture Date: 1/3/2024





Photo 7. Location Number: 4 | Impact Areas: 2-3 (ATF) | Capture Date: 1/3/2024



Photo 8. Location Number: 4 | Impact Areas: 2-3 (ATF) | Capture Date: 1/3/2024





Photo 9. Location Number: 5 | Impact Areas: 2-4 (ATF) | Capture Date: 1/3/2024



Photo 10. Location Number: 5 | Impact Areas: 2-4 (ATF) | Capture Date: 1/3/2024





Photo 11. Location Number: 6 | Impact Areas: 8-1 and 8-9 | Capture Date: 1/4/2024



Photo 12. Location Number: 7 | Impact Areas: 8-2 and 8-3 | Capture Date: 1/4/2024





Photo 13. Location Number: 8 | Impact Areas: 8-4 and 8-5 | Capture Date: 1/4/2024



Photo 14. Location Number: 8 | Impact Areas: 8-4 and 8-5 | Capture Date: 1/4/2024





Photo 15. Location Number: 9 | Impact Areas: 8-5 and 8-10 | Capture Date: 1/4/2024



Photo 16. Location Number: 9 | Impact Areas: 8-5 and 8-10 | Capture Date: 1/4/2024





Photo 17. Location Number: 10 | Impact Areas: 8-5 | Capture Date: 1/4/2024



Photo 18. Location Number: 11 | Impact Areas: 8-6 and 8-7 | Capture Date: 1/4/2024





Photo 19. Location Number: 11 | Impact Areas: 8-6 and 8-7 | Capture Date: 1/4/2024



Photo 20. Location Number: 12 | Impact Areas: 8-8 | Capture Date: 1/4/2024





Photo 21. Location Number: 13 | Impact Areas: 9-1 and 9-2 | Capture Date: 1/4/2024



Photo 22. Location Number: 13 | Impact Areas: 9-1 and 9-2 | Capture Date: 1/4/2024



Photo 23. Location Number: 14 | Impact Areas: 13-1 (Vicinity of ISG-4 and P-34) | Capture Date: 1/3/2024



Photo 24. Location Number: 14 | Impact Areas: 13-1 (Vicinity of ISG-4 and P-34) | Capture Date: 1/3/2024





Photo 25. Location Number: 15 | Impact Areas: 13-1 | Capture Date: 1/3/2024



Photo 26. Location Number: 16 | Impact Areas: 13-1 | Capture Date: 1/3/2024



Photo 27. Location Number: 17 | Impact Areas: 13-1 (Vicinity of ISG-6) | Capture Date: 1/3/2024



Photo 28. Location Number: 18 | Impact Areas: 13-1 (Vicinity of ISG-7 and P-32) | Capture Date: 1/3/2024





Photo 29. Location Number: 18 | Impact Areas: 13-1 (Vicinity of ISG-7 and P-32) | Capture Date: 1/3/2024



Photo 30. Location Number: 19 | Impact Areas: 13-1 (Vicinity of ISG-8) | Capture Date: 1/3/2024



Photo 31. Location Number: 19 | Impact Areas: 13-1 (Vicinity of ISG-8) | Capture Date: 1/3/2024



Photo 32. Location Number: 20 | Impact Areas: 13-3 | Capture Date: 1/3/2024





Photo 33. Location Number: 21 | Impact Areas: 13-3 | Capture Date: 1/3/2024



Photo 34. Location Number: 21 | Impact Areas: 13-3 | Capture Date: 1/3/2024





Photo 35. Location Number: 22 | Impact Areas: 13-4 (ATF) | Capture Date: 1/3/2024



Photo 36. Location Number: 22 | Impact Areas: 13-4 (ATF) | Capture Date: 1/3/2024





Photo 37. Location Number: 22 | Impact Areas: 13-4 (ATF) | Capture Date: 1/3/2024



Photo 38. Location Number: 23 | Impact Areas: 19-1 | Capture Date: 1/3/2024



Photo 39. Location Number: 24 | Impact Areas: 19-2 and 19-2a | Capture Date: 1/3/2024



Photo 40. Location Number: 24 | Impact Areas: 19-2 and 19-2a | Capture Date: 1/3/2024

