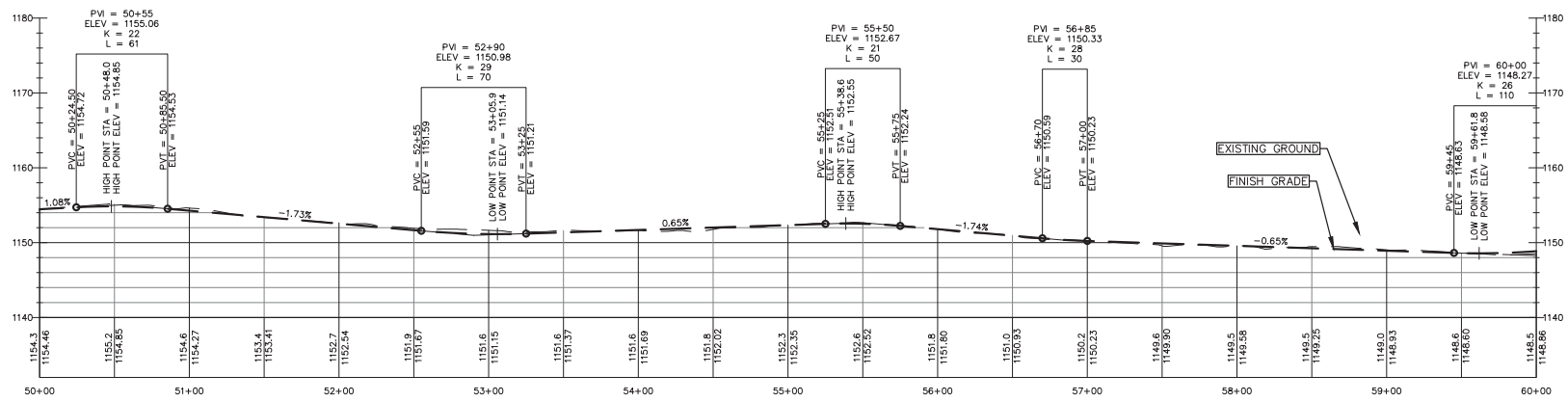


- LEGEND**
- WETLAND IMPACTS, PERMANENT
 - WETLAND IMPACTS, TEMPORARY
 - RETAINING WALL
 - CULVERT

DOUGLAS DRIVE PIPE TABLE

PIPE NAME	TYPE	SIZE (IN)	SLOPE (%)	LENGTH (FT)*	START INVERT	END INVERT
DDP11	12 inch Corrugated HDPE Pipe	12"	0.49%	61	1133.20	1132.90
DDP17	12 inch Corrugated HDPE Pipe	12"	6.18%	81	1147.00	1142.00
DDP18	18 inch Corrugated HDPE Pipe	18"	2.41%	58	1149.00	1147.60
DDP19	18 inch Corrugated HDPE Pipe	18"	1.12%	51	1148.57	1148.00
DDP24	18 inch Corrugated HDPE Pipe	18"	2.60%	38	1148.00	1147.00
UD2	6 inch Corrugated HDPE Pipe	6"	0.48%	114	1133.75	1133.20



drawing no.
DD-6

sheet: 27 of 50

Granite State Landfill, LLC
Dalton, New Hampshire
Permitting Plan Set
Douglas Drive
Plan and Profile Sheet 5

DATE: October 2023

PROJECT NO: 1101

DRAWN BY: AUS

DESIGNED BY: AUS

CHECKED BY: AUS

APPROVED BY: AUS

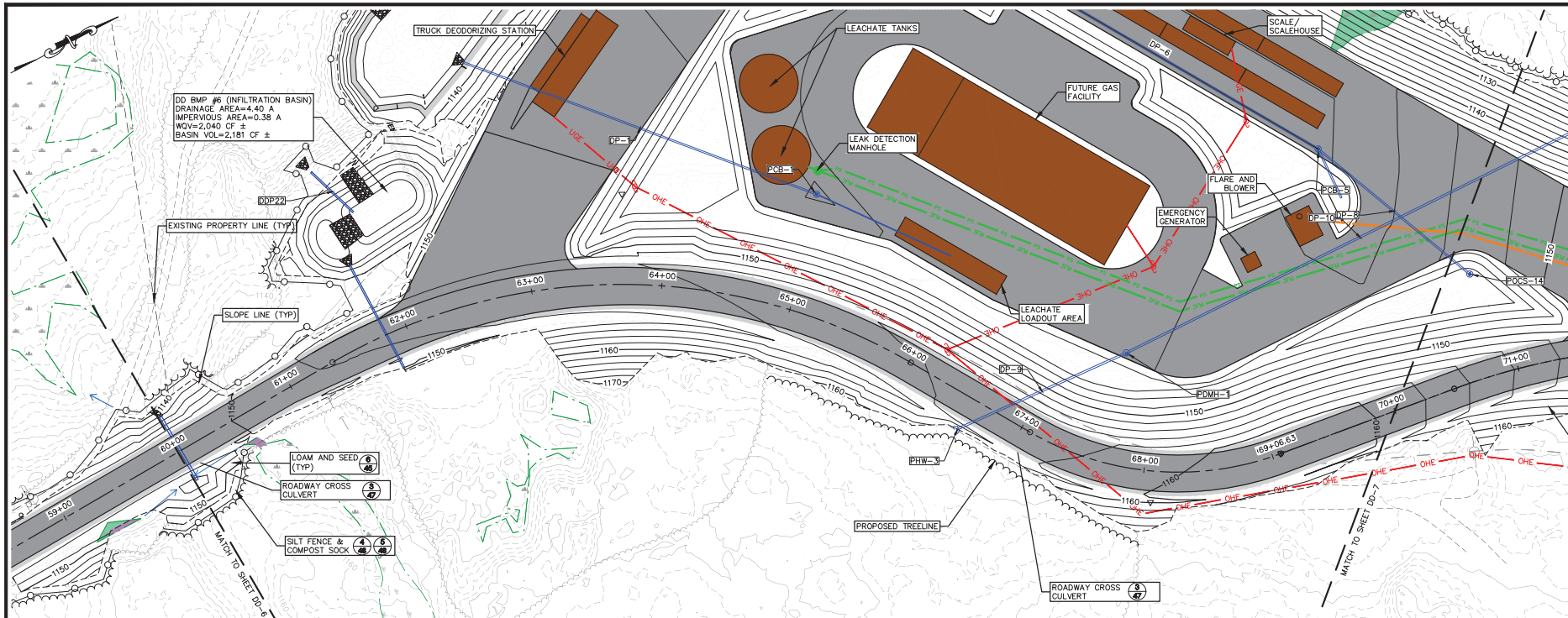
SCALE: 1" = 40'

DATE: 10/27/23

CMA ENGINEERS
Civil/Environmental/Structural

Portsmouth, NH • Manchester, NH • Portland, ME
603-431-6186 • 603-662-0108 • 207-561-4225
c.m.a.e.n.g.i.n.e.e.r.s.s.c.o.m

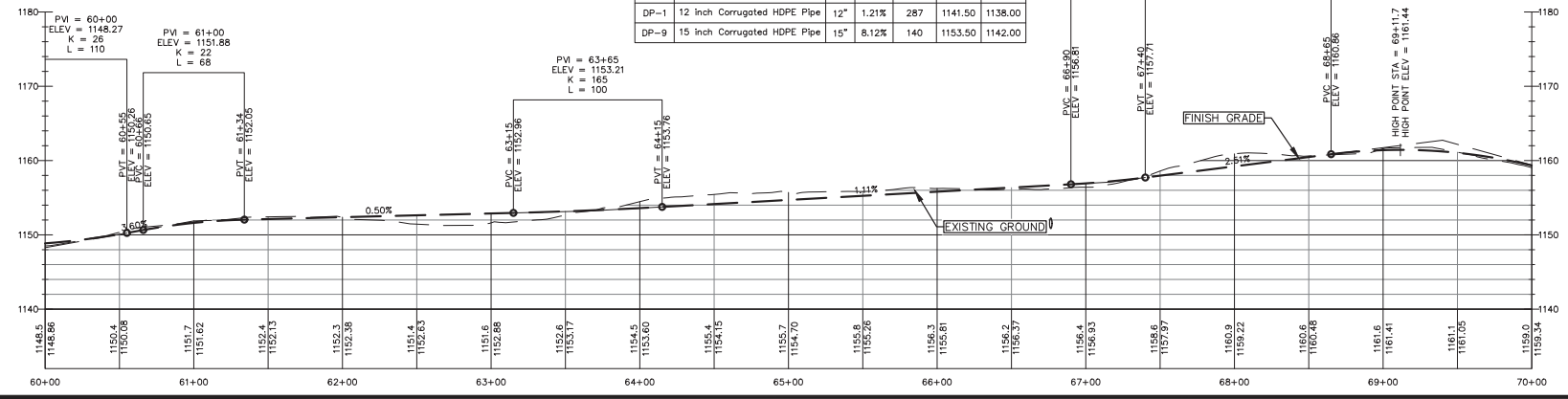
N:\CAD\PROJECTS\1101.03_GSL_Phase 1 SW App-REV\Production\Douglas Drive\1101-GRADE AND DRAIN-ACCESS ROAD-Cut Sheets.dwg Date Plotted: Oct 06, 2023 - 8:45am Plotted By: ARD



- LEGEND**
- WETLAND IMPACTS, PERMANENT
 - WETLAND IMPACTS, TEMPORARY
 - RETAINING WALL
 - CULVERT

DOUGLAS DRIVE PIPE TABLE

PIPE NAME	TYPE	SIZE (IN)	SLOPE (%)	LENGTH (FT)	START INVERT	END INVERT
DDP20	18 inch Corrugated HDPE Pipe	18"	5.30%	57	1145.00	1142.00
DDP21	12 inch Corrugated HDPE Pipe	12"	2.25%	89	1149.50	1147.50
DDP22	12 inch Corrugated HDPE Pipe	12"	1.13%	44	1144.00	1143.50
DP-1	12 inch Corrugated HDPE Pipe	12"	1.21%	287	1141.50	1138.00
DP-9	15 inch Corrugated HDPE Pipe	15"	8.12%	140	1153.50	1142.00



<p>CMA ENGINEERS Civil/Environmental/Structural</p> <p>Portsmouth, NH • Manchester, NH • Portland, ME 603-431-6186 • 603-627-0108 • 207-541-4225</p> <p>c.m.a.e.n.g.i.n.e.e.r.s.c.o.m</p>	<p>Granite State Landfill, LLC Dalton, New Hampshire Permitting Plan Set</p> <p>Douglas Drive Plan and Profile Sheet 6</p> <p>drawing no. DD-7</p> <p>sheet: 28 of 50</p>
--	--

M:\CADD\PROJECTS\1101.03_GSL_Phase 1_SW_App-REV\Production\Douglas Drive\1101-03-GRADE AND DRAIN-ACCESS ROAD-Cut Sheets.dwg Date Plotted: Oct 06, 2023 - 8:45am Plotted By: ARD