

Granite State Landfill, LLC
 Dalton, New Hampshire
 Permitting Plan Set
 Douglas Drive
 Plan and Profile Sheet 1

drawing no. **DD-2**

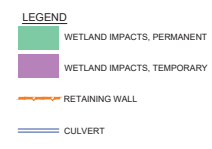
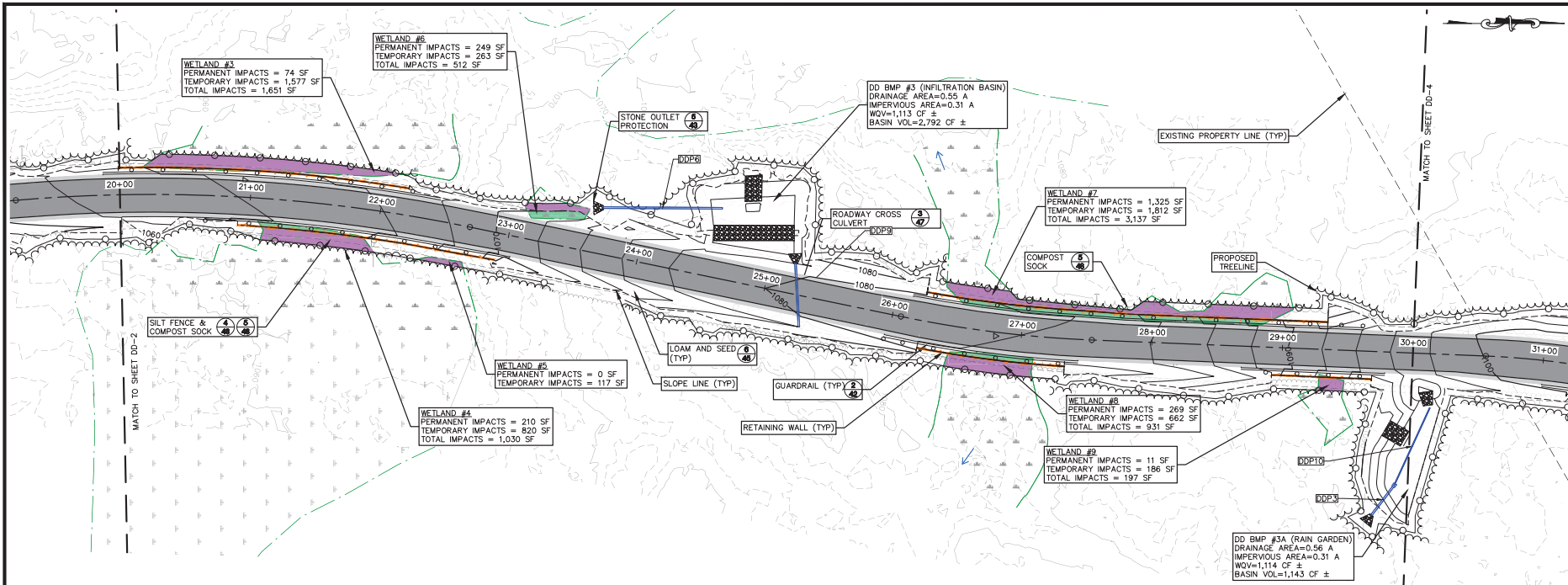
sheet 23 of 50

CMAA ENGINEERS
 CIVIL/ENVIRONMENTAL/STRUCTURAL
 Portsmouth, NH • Manchester, NH • Portland, ME
 603.431-6196 • 603.627-7008 • 207.551-1423
 c.m.a.a.e.n.g.i.n.e.e.r.s.,c.o.m.

DATE: October 2023
 DRAWING NO: 1101
 DESIGNED BY: ATR/MLJ/STF
 CHECKED BY: ATR/MLJ/STF
 APPROVED BY: AUS

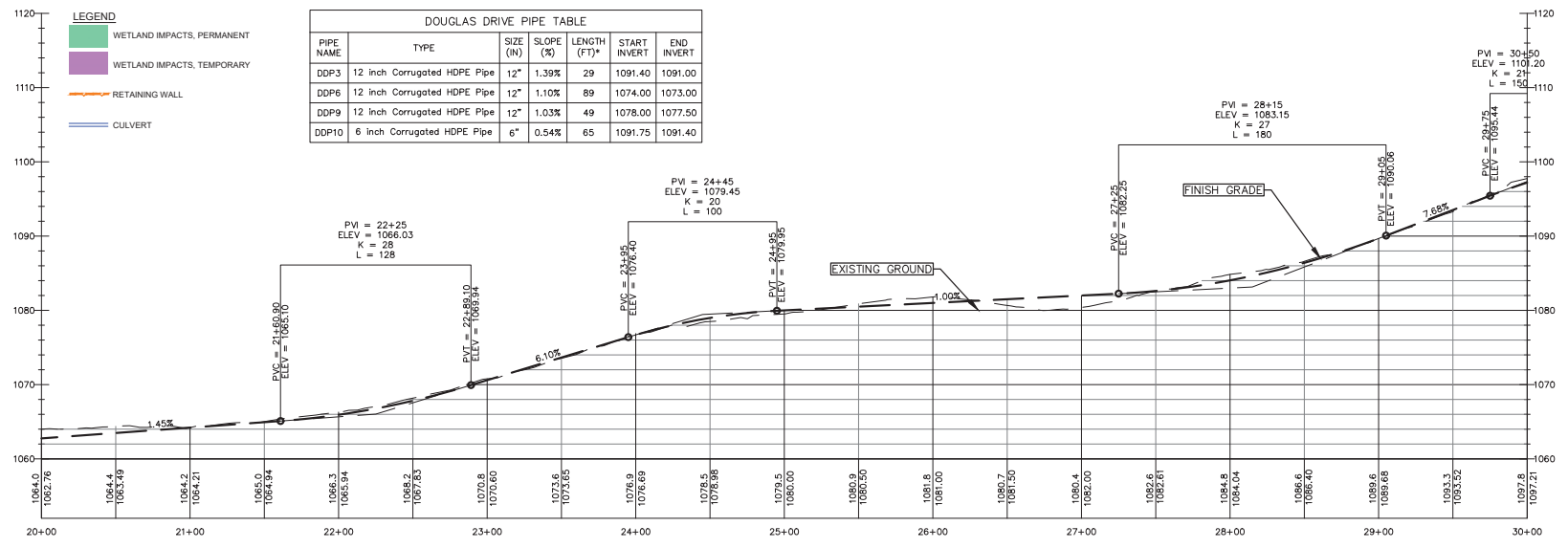
SCALE: 1" = 40' (PLAN)
 1" = 10' (PROFILE)

M:\CAD\PROJECTS\1101.03_GS_Phase 1 SW App-REV1\Production\Douglas Drive\1101-GRADE AND DRAIN-ACCESS ROAD-Cut Sheets.dwg Date Plotted: Oct 06, 2023 - 8:42am Plotted by: AR07



DOUGLAS DRIVE PIPE TABLE

PIPE NAME	TYPE	SIZE (IN)	SLOPE (%)	LENGTH (FT)*	START INVERT	END INVERT
DDP3	12 inch Corrugated HDPE Pipe	12"	1.39%	29	1091.40	1091.00
DDP6	12 inch Corrugated HDPE Pipe	12"	1.10%	89	1074.00	1073.00
DDP9	12 inch Corrugated HDPE Pipe	12"	1.03%	49	1078.00	1077.50
DDP10	6 inch Corrugated HDPE Pipe	6"	0.54%	65	1091.75	1091.40



Granite State Landfill, LLC
Dalton, New Hampshire
Permitting Plan Set
Douglas Drive
Plan and Profile Sheet 2

DATE: October 2023
PROJECT NO: 1101
DRAWN BY: AT/TRAJ/STF
CHECKED BY: AT/TRAJ/STF
APPROVED BY: AUS

drawing no: DD-3
sheet: 24 of 50

CMAA ENGINEERS
Civil/Environmental/Structural
Portsmouth, NH • Manchester, NH • Portland, ME
603.431-6196 • 603.627-0708 • 207.541-4225
c.m.a.a.e.n.g.i.n.e.e.r.s.,c.o.m.

M:\CADD\PROJECTS\1101.03_GS_Phase 1 SW App-REV1\Production\Douglas Drive\1101-GRADE AND DRAIN-ACCESS ROAD-Cut Sheets.dwg Date Plotted: Oct 06, 2023 - 8:43am Plotted By: AR07