

Weird Things You Find at Your Facility & How to Manage Them

Things You Need to Know

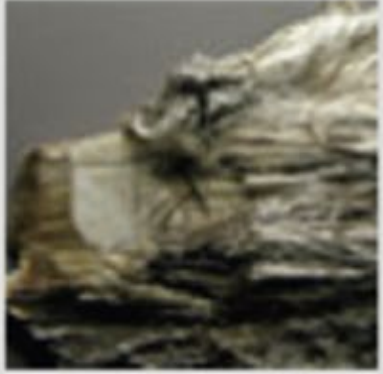
- Periodic breaks to take questions.
- Clickable text throughout the presentation.
- When watching the recording, check the handout to see the time during the recording you can hear information on each topic.
 - Broken into 38 Categories
- This is recorded in 2023 and reflect the rules at that time.



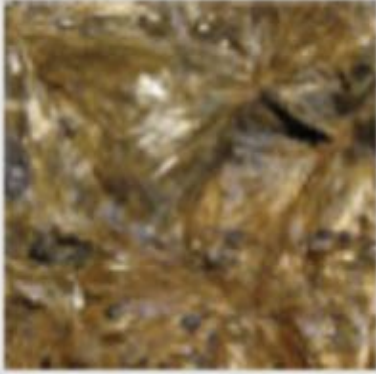
Ammunition

- Safety Concern
- Contact the Local PD or State Hotline (603) 223-4381
- Reporting, you may end up having an [incident](#).

THERE ARE 6 TYPES of ASBESTOS



Chrysotile



Amosite



Crocidolite



Tremolite



Anthophyllite



Actinolite

Asbestos

- Asbestos is a solid waste; AND a hazardous air pollutant.
- There are [need to know facts](#) that everyone should be aware of.
- Most solid waste facilities are prohibited from accepting it.
- There are MANY products made using asbestos.
- There are [BMPs](#) for solid waste facilities.



If you are “gifted” asbestos...

- Identify the asbestos item (or item that may contain asbestos)
- Cordon off the area from customers and residents.
- Wet down the waste and cover it, if possible.
- Contact an [asbestos contractor](#) authorized to come to your facility to collect it and take it from your facility.
- Do NOT attempt to bag it yourself as you do not have the training to take care of it.

Asphalt, Bricks & Concrete (A,B,C)

- Facilities may collect, transfer, process, treat, or dispose of A,B,C as long as conditions are followed ([Env-Sw 302.03\(b\)\(9\)](#)).
 - Opportunities for reuse, recondition, & buried.
 - Ensure it is a clean load and not mixed with other waste.
 - Asphalt may not be ground or pulverized without a binding agent.
-



Common Questions about A,B,C

- What about rebar?
 - Prefer it to be removed.
 - Incidental rebar should be cut flush with the concrete because it is a MAJOR physical hazard.
- What about asphalt with painted lines?
 - Incidental paint is fine.
 - As long as the paint is not lead paint.





A typical pre-1979 PCB-containing fluorescent light ballast (FLB)



Ballasts

The issue is they may contain PCBs.

- Ballasts that are NOT clearly marked as non-PCB containing then they must be tested or assumed to contain.
 - Those with PCBs testing above the TSCA levels need to be disposed of through an [authorized hauler](#).
- Those clearly marked as non-PCB may go into scrap metal if the vendor allows it.



Bulky Waste

- Bulky wastes are large items that cannot be handled by normal solid waste processing, collection or disposal methods.
- Appliances, furniture, large auto parts, mattresses, tires & *tree stumps.
- Options: Repurpose, Recycle

* when not managed under RSA 149-M:4,XXII



Campers, Trailers & Boats



- Designated as bulky waste
 - Tires
 - Metal
 - Wood
 - Plastic
 - Formica & Fiberglass
 - There also could be fluids, refrigerants, & electronics.
- If you plan to accept them, then you need to know how to take them apart or have a vendor to manage them.

Hot Tubs

- Determine the Condition
 - Still good, re-sell or use for a different purpose.
 - Waste, then it may be disposed of as solid waste.
- If going as a waste, contact the disposal facility.
- Safety comes first when prepping for disposal.



Furniture with Electronics

- Could be a problem because they may have hazardous materials including heavy metals, batteries, etc.
 - TV Screens
 - Motors
 - Batteries
 - Circuit Boards
- Some items are banned from disposal.
- Is there still potential in the furniture?



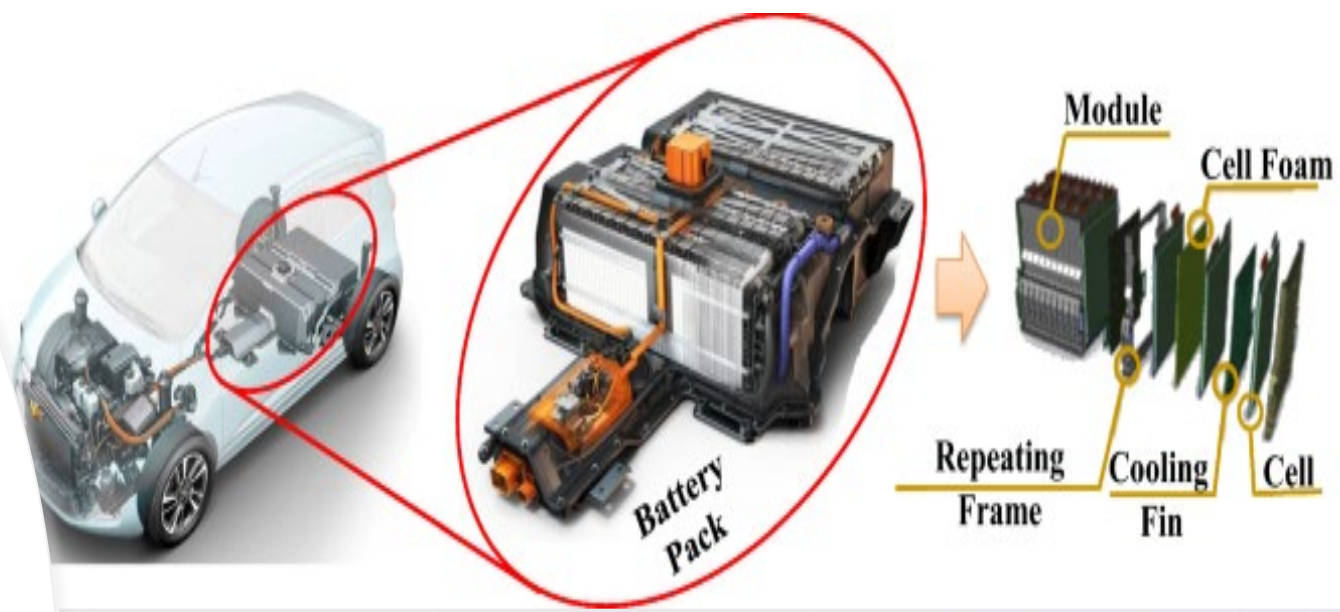
Compressed Gas Containers

- Spray Foam
- Helium
- Air Tanks
- Propane
- Fire Extinguishers
- Use as a product?
- Vendors
 - [State Contract](#), [NRRRA](#), [Tradebe](#)

*If they are empty and devavled, they may go into the scrap metal. Check with your vendor before disposing.



Electric Vehicle Batteries



- Must be handled with care. Transfer stations should NOT be taking them in without an immediate outlet.
- Organizations and businesses
 - [Battery Recyclers of America](#)
 - [Call2Recycle](#)
 - [North Coast Services](#)
- Have information ready for residents who ask questions.
- Transporters must be authorized vendors. Beware of fly by night operations.



Damaged Batteries???

- BE PREPARED!
- Contact your vendor to have it removed as quickly as possible.
- Fire Suppressant information is conflicting.
- Have safety kits on-site
 - One example are DDR Kits with Cell Block from Call2Recycle

For more information on Batteries, see the [Batteries & HHW](#) Workshop.





Explosives

- Grenades
- Bombs
- Incendiary Devices
- Dynamite



Explosives

- Before accepting anything, talk to the customer.
- Inspect the load of items.
- Provide options and information.
- If it is gifted to you, contact your local PD or NH State Police Bomb Squad.
 - 24-Hour Hotline (603) 223-4381.



Fireworks & Flares

Step 1: Set the item aside away from patrons and aiseways.

Step 2: Contact your local police or fire department.

Step 3: Let them do their jobs 😊

If you are in an emergency situation, contact the State Police 24-hour hotline (603) 223-4381.

*****NOTE:** It is NO LONGER good practice to wet down the fireworks when they come to the facility.

Fluorescent Bulbs

- Must be managed as a [Universal Waste](#).
 - Compatible Containers
 - Closed Containers
 - Stored Under Cover
 - Labelled Containers
 - Stored for no longer than 1 year
 - Recycled
- Fluorescent bulbs contain [mercury](#) (even the green tipped ones).
- It is [illegal to dispose of mercury](#) in NH.



Broken Fluorescent or Mercury-Containing Bulbs

- You MUST Manage it as a Universal Waste or follow the Hazardous Waste Rules.
- Contact your vendor to let them know you have one and find out how they want it packaged for shipment.
- Vendor Options
 - [Computer & Electronics](#)
 - [State Contracts](#)
 - [NRRRA](#)





LED Bulbs

- According to EPA, these bulbs may be thrown into the trash.
- Do NOT recycle with glass.
- You may check with your ewaste hauler to see if they will take them.



Food Waste Opportunities

- Food waste makes up to 25% of MSW in this country.
 - Donation
 - Food Waste Collection
 - Composting
- Choose Diversion!

Freon & Refrigerants

- It is illegal to vent any refrigerant into the atmosphere.
- Do NOT attempt to evacuate them unless you are certified to do so.
- Store appliances in designated space if containing refrigerants.
- Have a certified vendor remove the refrigerants, provide proper documentation and mark the appliances.
 - Paperwork is required to be kept for at least 3 years.
- EPA Hotline: 1-800-296-1996





What to do with an Appliance Devoid of Refrigerant?

You MAY accept it with the following.....

1. Have the person dropping it off pay the fee no matter what.
2. Have them sign paperwork stating that they had someone remove the refrigerant appropriately & provide the information of the certified company. If they cannot do that, then have them write out what happened and sign in. Date it.
3. Make 2 copies. Give them one copy, file 1 copy.
4. The original goes with your Freon Vendor.



Refrigerant: Ammonia

- It is a corrosive waste
- Generally found in commercial appliances, campers, and some household units.
- Document appliances that come to you already drained.
- If you receive an appliance with this type of refrigerant contact
 - HWMB 1-800-HAZWAST
 - US EPA 1-800-296-1996
- Do NOT drain it and use as fertilizer!

Household Hazardous Waste (HHW)

- Off the shelf products purchased for home use that can be ignitable; corrosive; reactive; and/or toxic.
- Exempt from HW Rules IF directly thrown in household trash as opposed being generated by a business.
- As soon as SW Facility knowingly accepts it, they become the generator, and loses its exempt status.



Examples HW or HHW?

- Expired Hand Sanitizer
- Muriatic Acid
- Silver Backed Mirrors

- Notify NHDES 1-866-HAZWAST
- Obtain an EPA ID Number
- Options for pick up



Options

Educate
customers

[I'm Moving Brochure](#) | Advise of the hazards as well as options

Collection

One-Time Event | Permanent Facility | [BMPs](#)

Outside the
Box

Use the products that are still good | [Alternative HH Products](#)

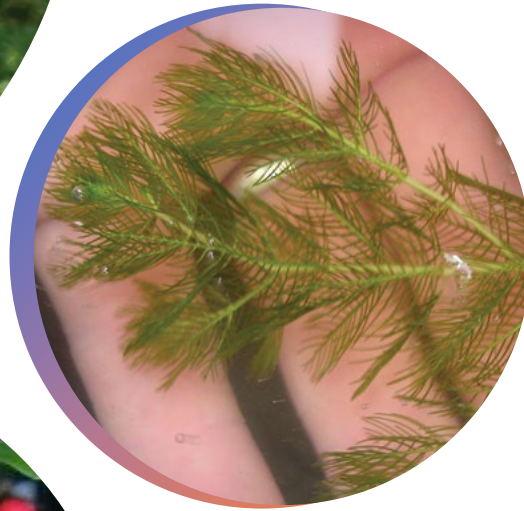


+



Invasive Upland & Aquatic Plants

- Management Options
 - Commercial Compost (**with restrictions**)
 - MSW
 - Do NOT add them to the leaf & yard waste or burn pile
- [NH Comprehensive Invasive Plant List](#)
- NH Policy: invasive plants are considered solid waste NOT leaf & yard waste.



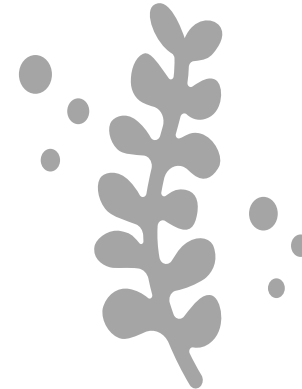


Invasive Plants – Who ya gonna call?



Upland Plants

NH Dept of Ag, Markets & Food
(603) 271-3488



Aquatic Plants

NHDES, Watershed & Biology Section
(603) 271-2248

Lead

- Lead Waste
 - [Lead paint chips & dust](#) (HHW)
 - Left over paint (HHW)
 - Leaded Glass (Depends)
 - Leaded Pipes (SW)
 - [C&D](#) with Lead Paint (Depends)
- If you are unsure, check in with the HWMB Program at 1-866-HAZWAST
- [Lead Program](#) through DHHS



*Just because the SW Rules state a facility is authorized to take the waste, you still need to VERIFY with the facility to make sure they will take the waste.

Point of Generation of Lead C&D

Residential (Homeowner or Contractor Generated)

Commercial

Demolition Activities

Routine maintenance, construction, remodeling, rehabilitation work or lead abatement

Hazardous Waste

Solid Waste (upon a HW Determination)

Refer to "Commercial" Point of Generation

HHW Exemption applies. Recommend implementing BMPs.

SW Landfill*

C&D Processor*

SW Landfill*

C&D Processor*

Incinerator



Management of Roadway Soils

(A subset of Limited Reuse Soils)



- Generated through roadway maintenance, street sweeping, ditch reestablishment, catch basin cleaning and/or storm-generated sediments.
- Can be contaminated with heavy metals, petroleum products and other contaminants.
- There are rules for reuse, storage, processing/treatment, and disposal.
- NHDES recommends that you work with qualified experienced professionals.



Liquid Mercury

- It can be recycled!
- A household may send it off for recycle through a HHW vendor.
- If you end up with liquid mercury, contact your NHDES to obtain an EPA ID number and then send out for recycling through a valid HW Transporter. It may go as Universal Waste.



Pharmaceuticals (Household)

- [National Prescription Take Back Days](#)
 - Fourth Saturday in April and October
- [NH Drug Drop Boxes](#)
- [Emptying the Medicine Cabinet Disposal Guidelines](#)
- Guidance
 - Do NOT flush medications
 - Crush them and put in a bag with coffee grounds or kitty litter. Dispose in MSW.

For HOUSEHOLD Sharps



Sharps & Infectious Waste

- Point of generation is key
- Non-household must be managed under [Env-Sw 904](#).
- [BMPs for Household Sharps](#) & [Disposal Tips](#)
- Information on [mailback](#) programs.
- Other infectious waste
- [PPE](#), ensure you & your employees are protected.



Common Questions or Concerns

- Homeless Camps
- Roadside clean-ups
- Convenience Store Containers

- Safety
 - Wear proper PPE
 - Train volunteers
 - Be vigilant!
 - Contact the Police Department



Other Concerns

- Crime Scene Waste
- Bodies of Dead Persons
- Human Ashes
 - [Burial at Sea](#)
 - To scatter on public property, the municipality needs to be contacted directly.
- Animal Carcasses
 - Burial Single ([Env-Sw 810.07](#)) and Multiple ([Env-Sw 810.08](#))
 - Compost ([Env-Sw 608.04](#))
 - [Diseased Animals](#)
 - Roadkill
 - Contact the local DPW or Fish & Game

Meth Lab Waste

- If you see something, say something.
- What to look for?
 - Bottles with bubbling liquid and black flecks
 - Bottles with hoses sticking out of it.
 - Propane tanks with blue tinted valves.
- Contact the State PD at (603) 223-4381.
- [Things that Go Bang!](#)





Paint (BMPs)

Latex Paint	Oil-Based/Lead-Based Paint
<p>Solid Waste</p> <p>Dry it out and it may be thrown into the MSW.</p> <p>If it is still good paint, donate it or use it at the facility.</p>	<p>Hazardous Waste or HHW</p> <p>Cannot be thrown into the trash.</p> <p>If it is still good, advise patrons to donate it to others who can use it. Or, if you have a project at the facility where you know you can use it then you may accept it as a product.</p>

Paint Balls

- Should be disposed of as solid waste.
- These items are made from materials non-toxic to humans that ironically do not contain paint.
- They can be very toxic to pets.



Pesticides and Herbicides

- Household generated “off the shelf” products are classified as HHW.
- It may still be used as a product and its intended use if a customer has declared it a waste.
- List of some that are considered [Universal Wastes](#). They are on the FIFRA list.
- Questions? Contact the HWMB at:
1-800-HAZ-WAST





Pet Waste

- Do NOT Compost dog and cat waste!!!
- May be thrown into the trash, please make sure it is bagged.
- Can be flushed. The biological waste only – NOT the litter.
- Provide information and signage for your patrons.

Keep in mind that LIVESTOCK Waste may be composted. (See [Env-Sw 600](#) for more information)

Idea for a Scoop the Poop Campaign

Why Scoop That Poop?



44% of Frederick County residents surveyed do not see pet waste as a significant problem, but dog waste is the #3 cause of water pollution. In 1991, the EPA deemed dog waste to be as toxic as oil spills.



There are **23 million** fecal bacteria in 1 gram of pet waste which is equivalent to the weight of a paper clip.



Common myth — dog waste is as effective of a fertilizer as cow or horse manure, when it is actually more toxic. Due to their high-protein diet, dog waste is highly acidic and can burn your grass creating brown patches.



Two or three days worth of droppings from 100 dogs contributes enough bacteria to close a bay and its watershed areas within 20 miles to swimming and shell fishing.



110,000 lbs. of pet waste are left on Frederick County streets, yards and sidewalks every year.



SUSTAINABLEFREDERICKCOUNTY.ORG



Frederick County Government, Office of the County Executive
Sustainability and Environmental Resources
30 N. Market St., Frederick, MD 21701 | Sustainability@FrederickCountyMD.gov

Plastics Recycling



Bulky Rigid Plastics

- Recycling & Reuse are options.

Plastic Film

- Thin plastic that has stretch (plastic bags, plastic wrap, bread bags, bubble wrap, etc.)
- Clean & dry may be recycled separate from other plastics. [Drop boxes at retail locations.](#)
- Do NOT put in single stream.

Small Plastics & Containers

- Types of plastic determines recycling possibilities.
- Additionally, each facility manages it different.

Who to Contact?

- Your Recycling Vendors!!!
- [NRRA](#)
- [The Recycling Partnership](#)
- [Trex Recycling Programs](#)

PLASTIC FILM RECYCLING

Put the following plastic film items in this bin:

Plastic Bags Air Pillows Bubble Wrap Cereal Bags

Resealable Bags Produce Bags Bread Bags Case Overwraps

Plastic Padded Envelopes **When in doubt: Look for a store drop-off label or recycling numbers 2 or 4.** NO paper padded envelopes

Supporting a university-wide commitment
sustainability **Tufts**





Radioactive Wastes

- Do NOT accept this knowingly.
- Most found item is Iodine 131 disposed via kitty litter & medical waste after cancer treatment.
- Call [RAD Health](tel:6032714588) (603) 271-4588.



Railroad Ties

- Reuse them in landscaping, retaining walls, etc.
- Dispose of in a permitted landfill.
- Chip and use them as fuel; NOT allowed in NH.
- Alternate daily cover (contact receiving landfill)
- Do NOT burn them!





Telephone Poles

Contain chemicals

- [Pentachlorophenol](#)
- Creosote
- Other pesticides

Manage the same way as railroad ties.



Septage & Composting Toilets

- Not a Solid Waste
- Managed through the Wastewater Program at NHDES
- What about [Biosolids](#) & [Land Application](#)? Composting?

How a Composting Toilet Works

While there are many types of composting toilets, all revolve around one basic concept – liquids must be separated from solids. A central composting toilet sends waste to a unit located in the basement or outside. These can use a 1-pint flush system or be fully waterless. The simpler self-contained version is shown below.

1 Carbon material lines the composting chamber

Fill the chamber up to the agitator bar with carbon material such as dried sphagnum moss or coconut fiber.



2 Liquid and solid wastes separate

Liquid waste drains into a removable container. Some models may use a heated evaporation chamber underneath the compost area to collect and eliminate liquids. Solid waste drops through a manual flush door into the composting chamber.



3 Vinegar keeps things fresh

Is the bowl a little dirty? Keep a spray bottle with a mix of water and vinegar nearby to assist particles down and keep the passage clean.

4 Solids mix with compost

Turn the spider handle two to three rotations. The agitator bar will adequately mix the solid waste with the existing compost.

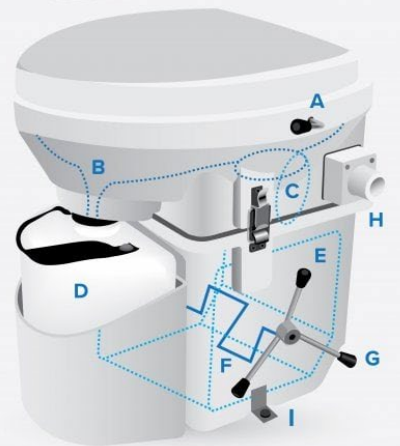
Once it's full ...

5 Empty liquids bottle

Unlatch the bowl and tilt up. Cap and remove the liquids bottle for emptying in a safe manner.

6 Dispose properly

Compost must be disposed of according to state and/or local guidelines. Your state's department of health website is a good place to begin research.



Assembly parts

- A. Flush handle
- B. Liquids drain
- C. Flush door
- D. Liquids bottle with handle
- E. Compost chamber
- F. Agitator bar
- G. Spider handle
- H. Fan and vent hose (air intake is on opposite side)
- I. Mounting screw

Does it need power?

Most composting toilets need electricity to power a fan for venting, oftentimes just 12 volts.

Minimal cleaning

The leftover matter clinging to the sides of the composting chamber helps to kick-start the next round of composting. Cleaning the toilet with chemical solutions inhibits its ability to grow the good bacteria that breaks down waste. Scrubbing with a 1:1 solution of white vinegar and water can freshen it up when needed.





Smoke Detectors

- Look for labels for radioactive waste.
- [Smoke Detectors & Proper Disposal](#)
- Take Back Programs
- List of Vendors (In Handouts)

Solar Panels

- They can have hazardous materials such as heavy metals and batteries in them.
- Sizes range from small garden units to full commercial units.
- Options
 - Producer Responsibility through the installer or manufacturer.
 - Electronics Vendor
 - NRRA





Styrofoam (Expanded Polystyrene)

- It is a solid waste and takes up space
- This material is 98% air and 2% #6 plastic
- Gilford Styrofoam Recycling Program [Brochure](#)

**GILFORD DPW'S ROLE
AS HUB LOCATION**



Textiles & Clothing

- Items in good condition should be donated.
 - Resell & Consignment Stores
 - Facility Swap Shop
- Items that are less than perfect.
 - [Apparel Impact](#)
 - [Ecosmith Recyclers](#)
 - [Helpsy](#)
- What about stained rags?
 - Auto shops
 - Other mechanics



Scrap Tires

([Env-Sw 905](#))

- Tires that are no longer road-worthy
- May be disposed with conditions
- Recycling & Reuse
 - [BMPs & Fact Sheet](#)
 - [Certified Waste Derived Products](#)
- Can residents take a single tire at a time from you as salvageable?



Used Oil for Recycle (BMPs)



- If it is mixed with anything, it is NOT UO for Recycle
- Rules for Storage
 - Closed and Sealed Containers in good condition
 - Labeled as “Used Oil for Recycle”
 - If outdoors, in secondary containment
 - Covered storage areas
- Filters may be accepted
- AST Registration?
- Management
 - Burn in a Registered Furnace
 - Transport as HW
- Used Oil Grants

Tips for Accepting Used Oil & Identifying Questionable Used Oil





Household Vapes & E-cigarettes ([Fact Sheet](#))

Types of Units

- Disposable: single piece unit (HHW)
- Rechargeable: battery detaches from pod (Varies)
- Vendors
 - [Tradebe](#) & [EPI](#)
- [Properly Managing eCigs & Vapes](#)
- Management in [Schools](#)

Vehicle Waste (Parts)

- Doors, Bumpers, Car Panel
- Tires, Rubber & Plastics
- Glass & Mirrors
- Electrical Components
- Greasy, Oily Parts
- Mercury Switches
- Asbestos Brake Pads
- [Motor Vehicle Salvage Yards](#)
- [Vehicle Registration Fees](#)





Fluids from Vehicles & Small Motor Equipment

Gas | Oil | Antifreeze | Brake Fluid
| Refrigerants | Window Washer Fluid |
Mixed Diesel | Fuel Additives

Wood & Ash

- Wood Chips
 - Virgin wood only
 - Clean wood component of C&D, Pallets ([Env-Sw 1503.09](#))
- Household wood stove ash
 - May go as solid waste ([Env-Sw 407](#))
 - Do NOT allow customers to throw it in MSW
 - Compost is option
 - Burn Pile (Be AWARE)
- Stumps
 - Don't burn them whole
 - Can be buried on site with conditions
 - Buried off-site w/ a permit ([Env-Sw 810.09](#))





Where to find more
information?

Other Resources

NHDES Website: New topics page

Town Webpage / Social Media

[Fact Sheets](#)

[Legislation](#) / [Rules](#) / [Statute](#)

[SWOT Channel](#)



And....

YOUR Operating Plan!!!!