

Draft 2020 303(d) Public Meeting

Today's Agenda

1. Overview of the Assessment Process
2. Overview of the CALM
3. What Documents are Available
4. How to Access Assessment Data
5. Visit Example Waters
6. Discussion

If you are having audio problems try calling in
(408) 650-3123, and use access code 110-541-061

Draft 2020 303(d) Public Meeting

- Please mute yourself
- Please turn off your video
- Use the chat function to be recognized if you have a question
- This is an informational meeting only
 - It will not be used to capture formal comments verbally or through the chat function

If you are having audio problems try calling in (408) 650-3123, and use access code 110-541-061

Draft 2020 303(d) Data Day/ Public Informational Meeting

N.H. Department of Environmental
Services
October 27th, 2020



Folks you will here from today



Matt Wood – NHDES, Water Quality Assessment Program Coordinator



Ken Edwardson – NHDES, Senior Scientist



Ted Diers – NHDES, Watershed Management Bureau Administrator

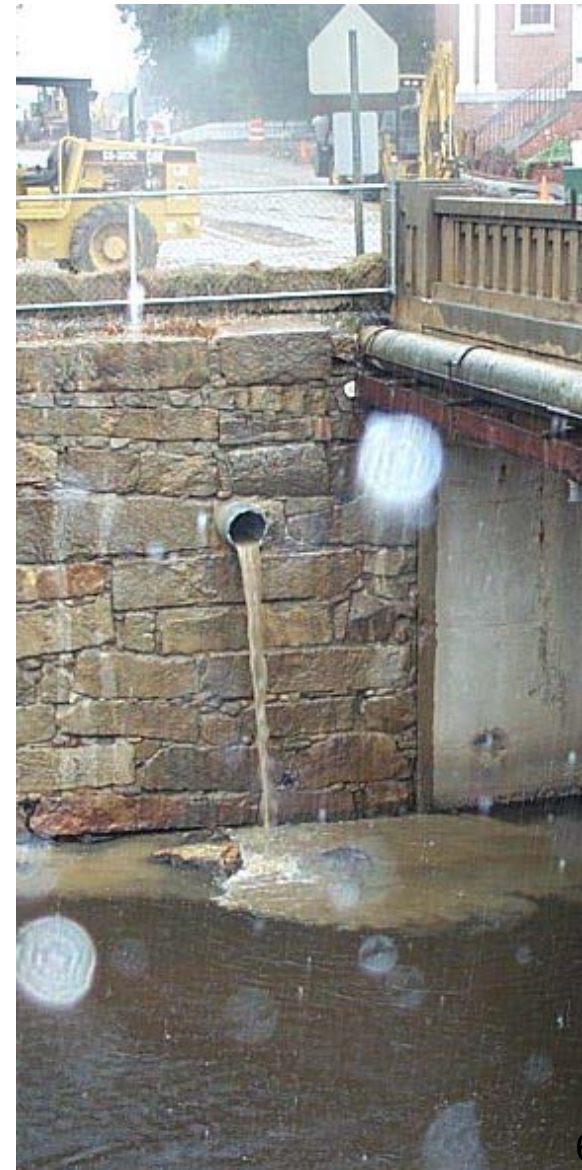
Topics for Today



1. Overview of the Assessment Process
2. Overview of the CALM
3. What Documents are Available
4. How to Access Assessment Data
5. Visit Example Waters
6. Discussion

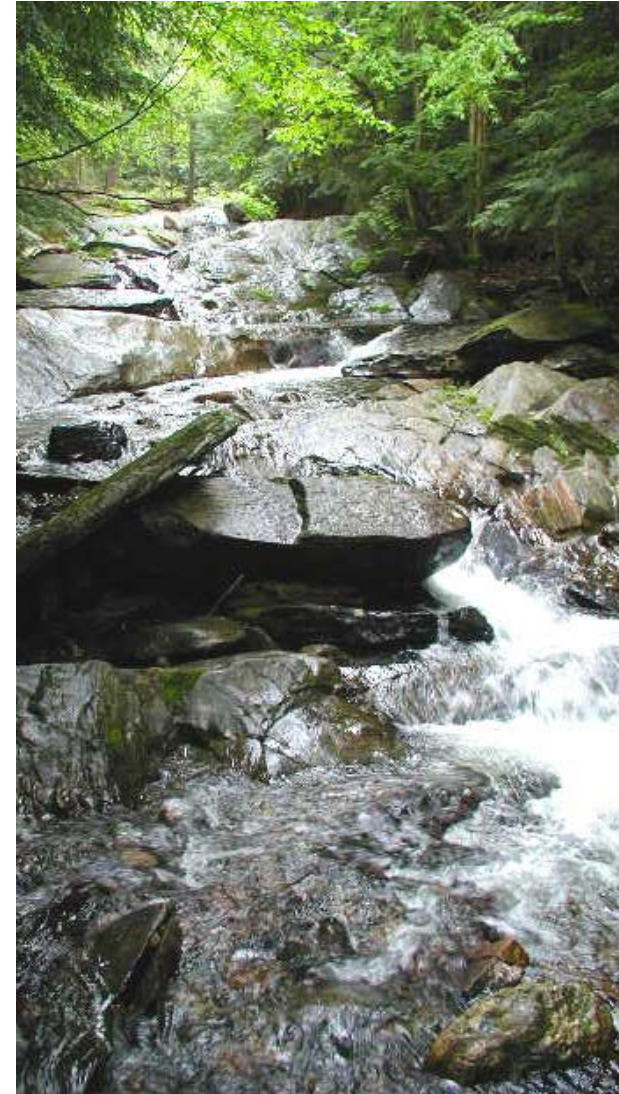
Assessment Process

- Biennial report fulfills Federal & State requirements to assess water quality.
- Completed biennially on even years
 - ..., 2016, 2018, 2020, etc.
- 305(b) = All assessments.
 - 303(d) = Impairments that need a TMDL.



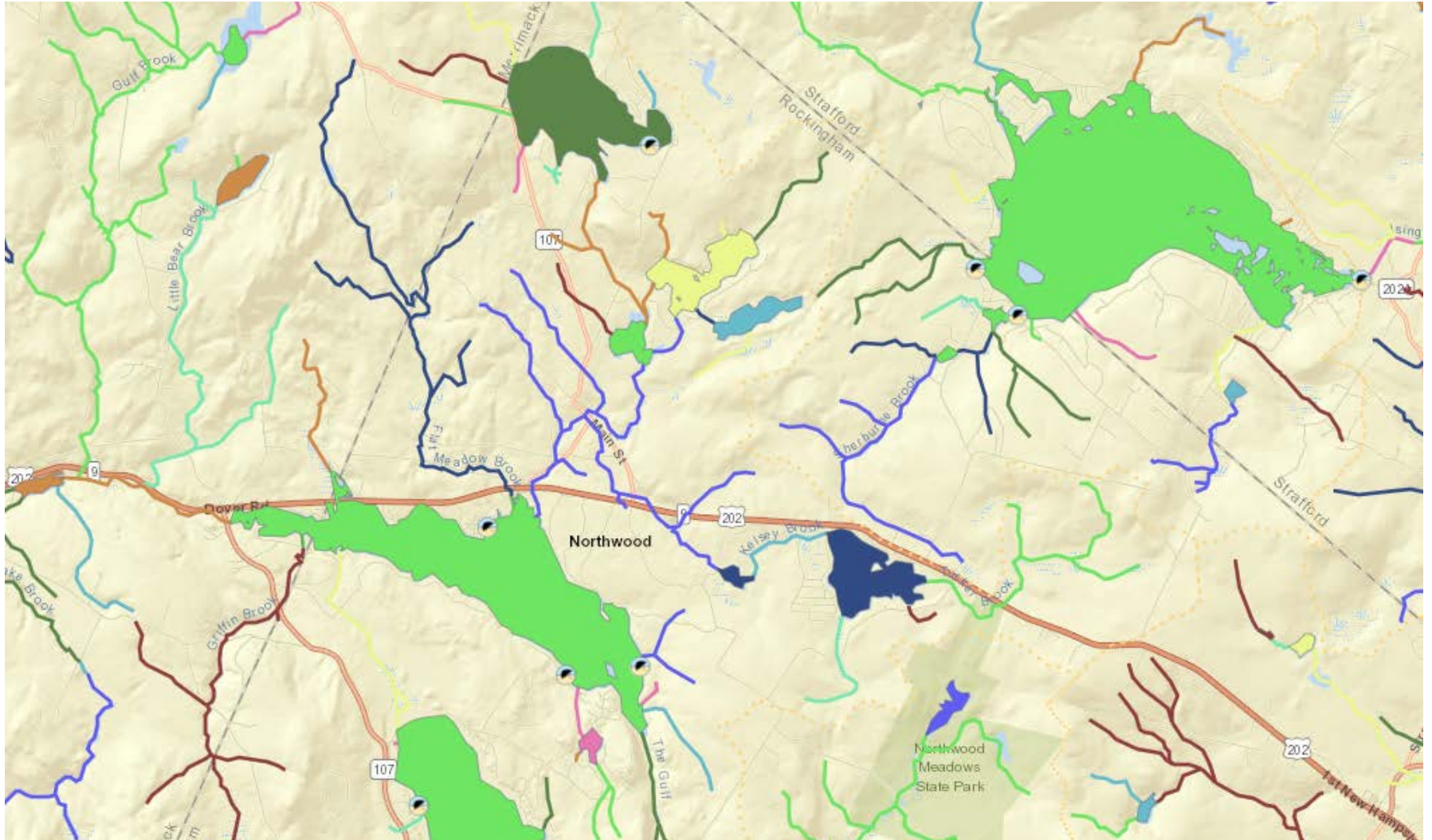
Assessment Process

- Assessments are governed by the Water Quality Standards, Env-Wq 1700 & RSA 485-A:8.
 - Designated Uses
 - Criteria - Numeric & Narrative
 - Antidegradation
- Consolidated Assessment & Listing Methodology (CALM) defines how we apply the Water Quality Standards to available data.



Assessment Unit

- Spatial unit of record is the “Assessment Unit”.



Consolidated Assessment & Listing Methodology (CALM)

- Translator document for how the water quality data will be used to make surface water quality attainment decisions by designated use, consistent with state surface water quality standards
- Like the 303(d), the CALM is available for public comment
- What kinds of things are in the CALM?



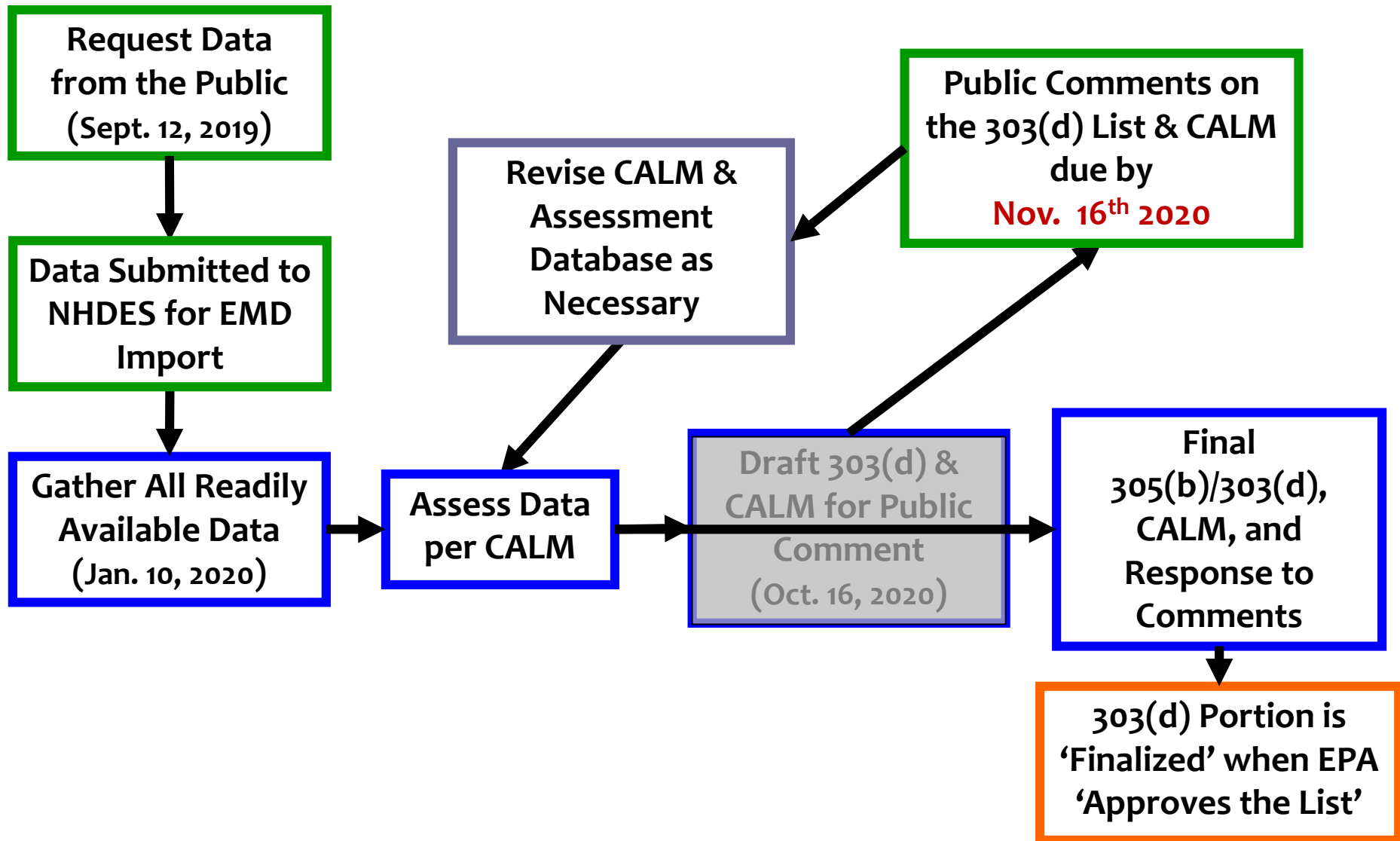
CALM Overview

What kinds of things are in the CALM?

- Core parameters for each use (i.e. bacteria for swimming use).
- Minimum number of samples.
- Maximum age of samples.
- How older data is treated.
- When samples must be taken (seasonality, time of day, flow, ...).
- Where samples are collected (depth profiles, to compare with older data, ...).
- How multiple samples will be treated.
- ...



Assessment Process



Where Do We Stand Today

2012 – Full EPA Approval – September 24, 2015

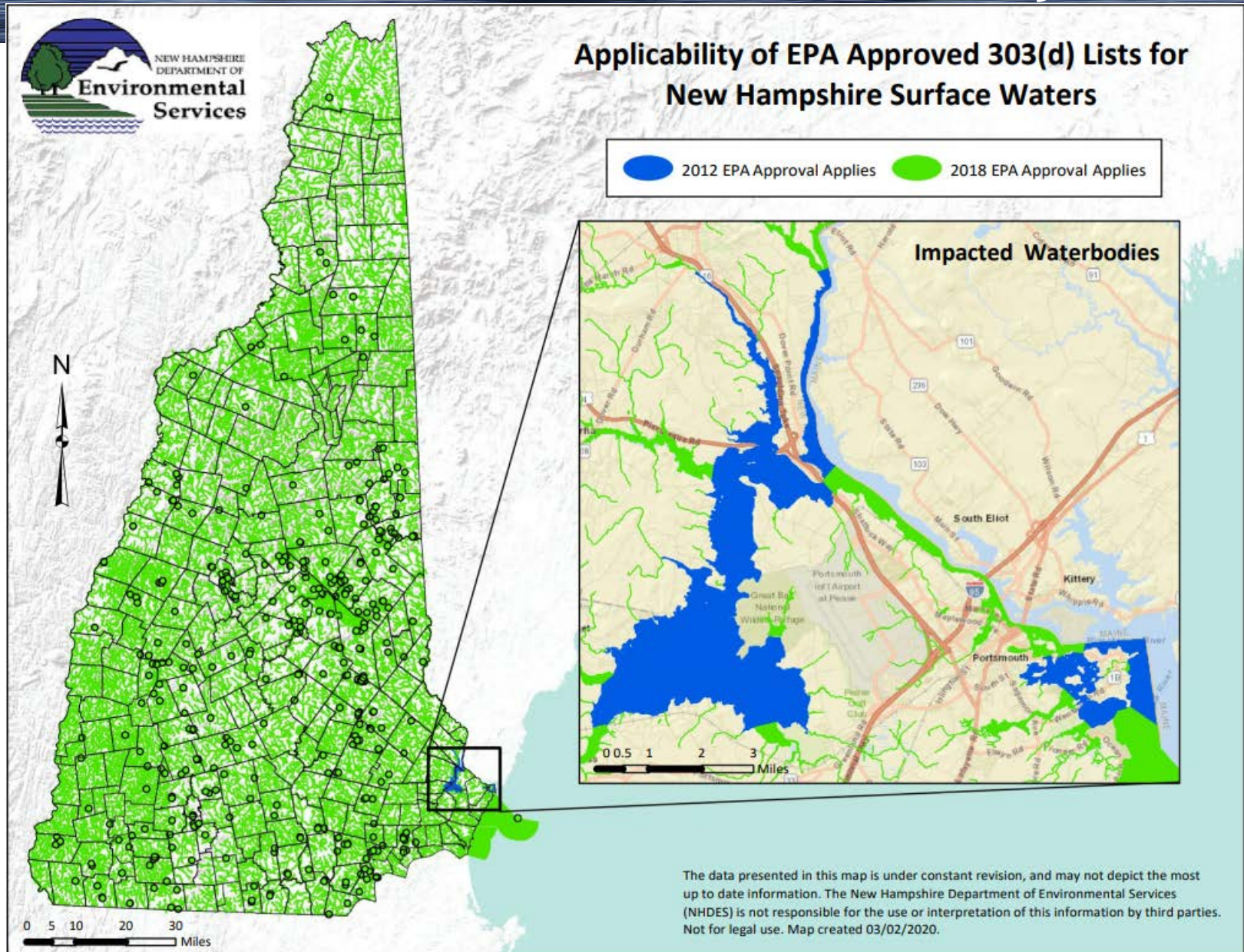
2014 – Partial EPA Approval – March 16, 2018

2016 – Partial EPA Approval – June 22, 2018

2018 – EPA Approval, without 24 Estuarine AUs – February 25, 2019

2020 – Draft Out For Public Comment – October 16, 2020

Where Do We Stand Today











Lets Dig a Little Deeper

What resources are available








Draft 303(d) Document Availability

2020, Draft 303(d) List

- [2020 Draft Consolidated Assessment and Listing Methodology \(CALM\)](#) 
 - [Request for Comments on the CALM](#) 
- [2020, 303\(d\) List Content Introduction](#) 
 - [Appendix A - 2020, Draft 303\(d\)](#) 
 - [Waters Removed from the 2018 303\(d\) List](#) 
 - [Waters Added to the 2020, Draft 303\(d\) List](#) 
 - [Request for Comments on the 2020, Draft 303\(d\) List](#) 
- [Appendix B – New Hampshire's Long-term 303\(d\) Vision and Request for Comments](#) 

Other related materials

- [Technical Support Document for the Great Bay Estuary Aquatic Life Integrity Designated Use Assessments, 2020 Draft 305\(b\) Report/303\(d\) List](#) 
- [GIS Layers for the 2020 Assessment](#) 
- [Impairments Removed Since the 2018 305\(b\)](#) 
- [Impairments Added to the 2020 305\(b\)](#) 
- [Surface Water Quality Assessment Viewer and Watershed Report Cards](#)
- [2020, Draft Status of Each Assessment Unit](#) 

<https://www.des.nh.gov/organization/divisions/water/wmb/swqa/2020/index.htm>

Submitting Formal Comments

SCHEDULE

Submit written comments by Monday, Nov. 16, 2020.



Submitting Formal Comments

WHAT TO SUBMIT

- General comments are useful but specific comments with supporting background information are preferred.
- Submittals should include the following contact information; Your Name and Organization, Mailing Address, E-mail, Phone number
- Your comments referenced to specific sections of the current CALM.
- Documentation supporting why you believe that a section of the CALM or 303(d) requires the changes suggested.

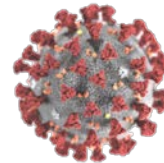
Submitting Formal Comments

HOW TO SEND COMMENTS TO NHDES

By mail: 2020, 303(d) Comments
New Hampshire Department of Environmental Services
Watershed Management Bureau
29 Hazen Drive, P.O. Box 95
Concord, New Hampshire 03302-0095
Attention: Matt Wood

By fax: 2020, 303(d) Comments (603) 271-7894

By Email: 303dComment@des.nh.gov



QUESTIONS? Please email Matt Wood at matthew.wood@des.nh.gov

Example Waters



Changes in the Great Bay Estuary



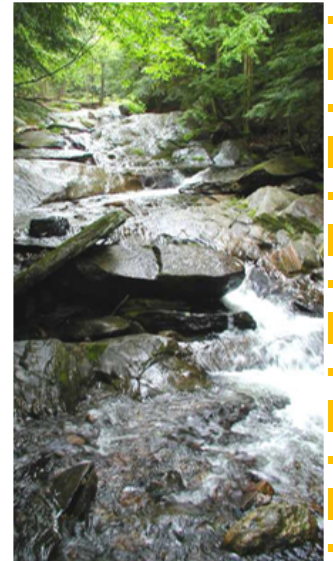
Total Nitrogen Section of the CALM

Slight Rewording

- Criteria
- Thresholds
- Measures

Assessment Process

- Assessments are governed by the Water Quality Standards, Env-Wq 1700 & RSA 485-A:8.
 - Designated Uses
 - Criteria - Numeric & Narrative
 - Antidegradation
- Consolidated Assessment & Listing Methodology (CALM) defines how we apply the Water Quality Standards to available data.



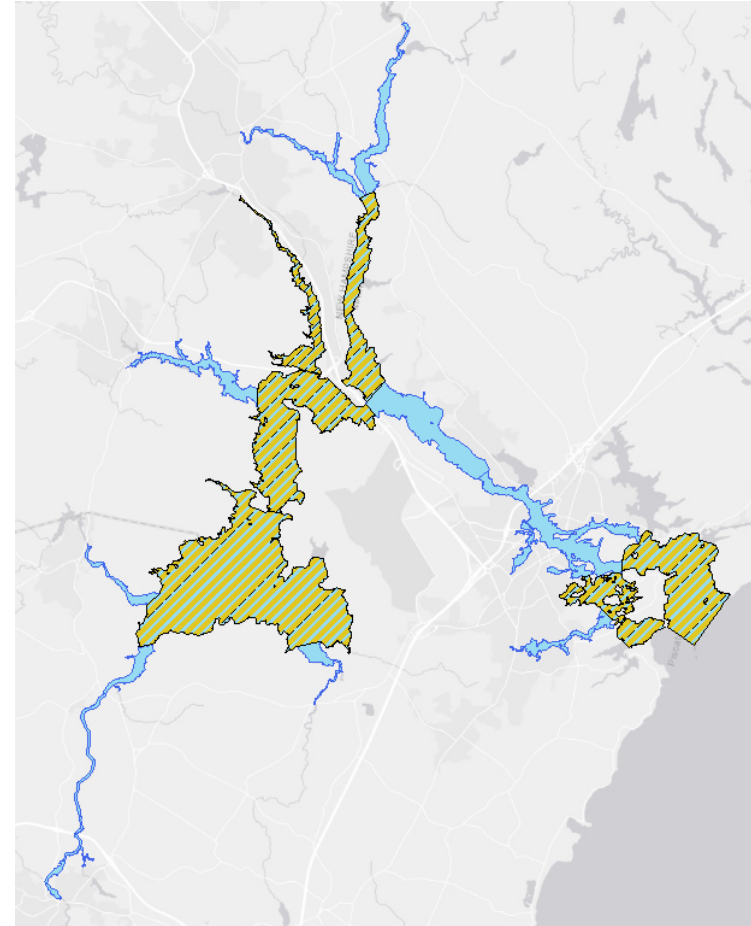
GBE Withdrawn from 2018 Assessment

Which Waters?

- Great Bay
- Bellamy River
- Little Bay
- Upper Piscataqua River
- Portsmouth Harbor
- Little Harbor/Back Channel

Total Nitrogen History

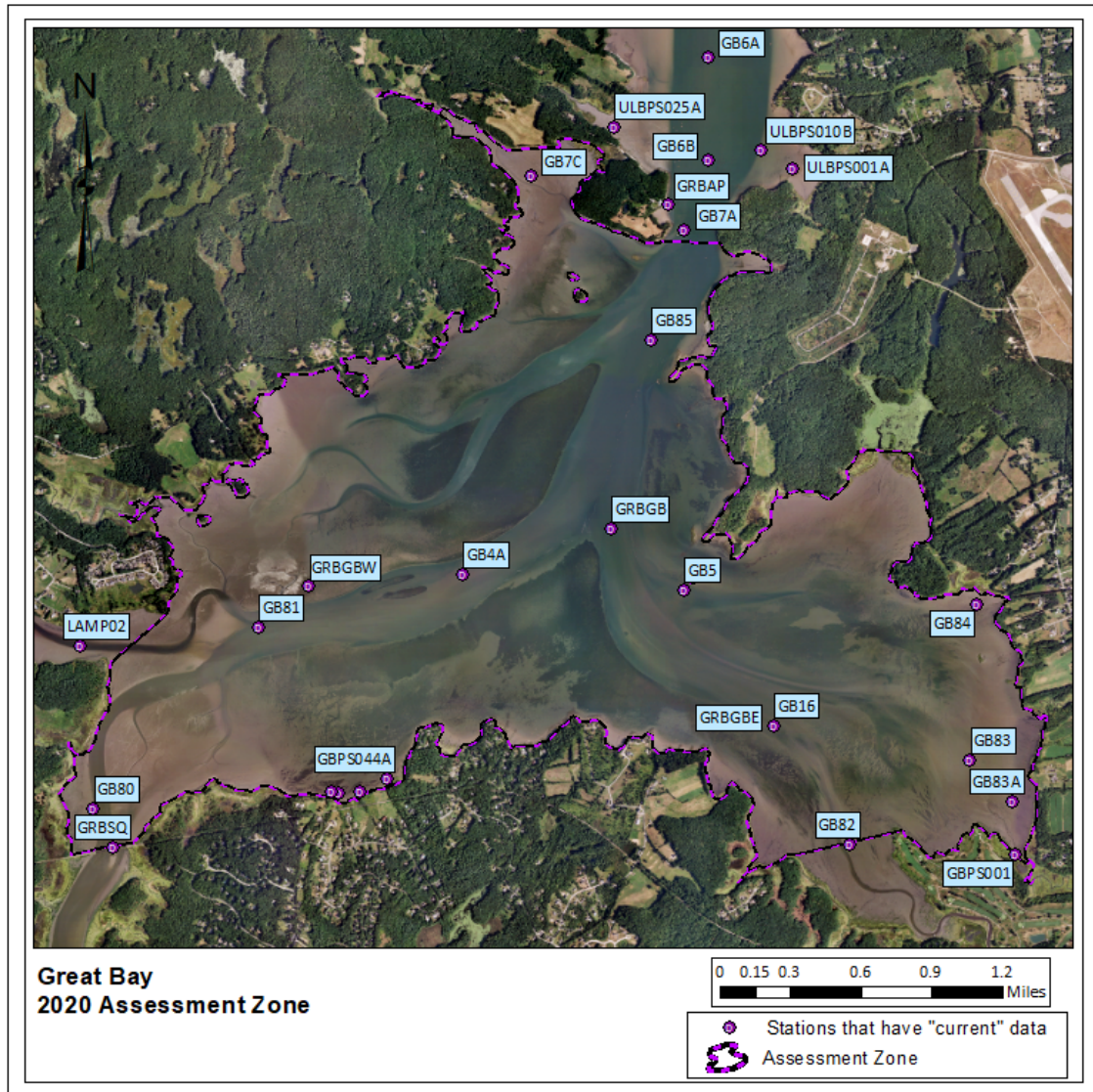
- 2008 – First Impaired for TN, EPA Approved
- 2010 – TN Impaired, EPA Approved
- 2012 – TN Impaired, EPA Approved
- 2014 – Removed TN Impairment, EPA Deferred
- 2016 – TN Not Impaired, EPA Deferred
- 2018 – *TN Not Impaired* → Retracted from Assessment
- 2020 – Now in Draft



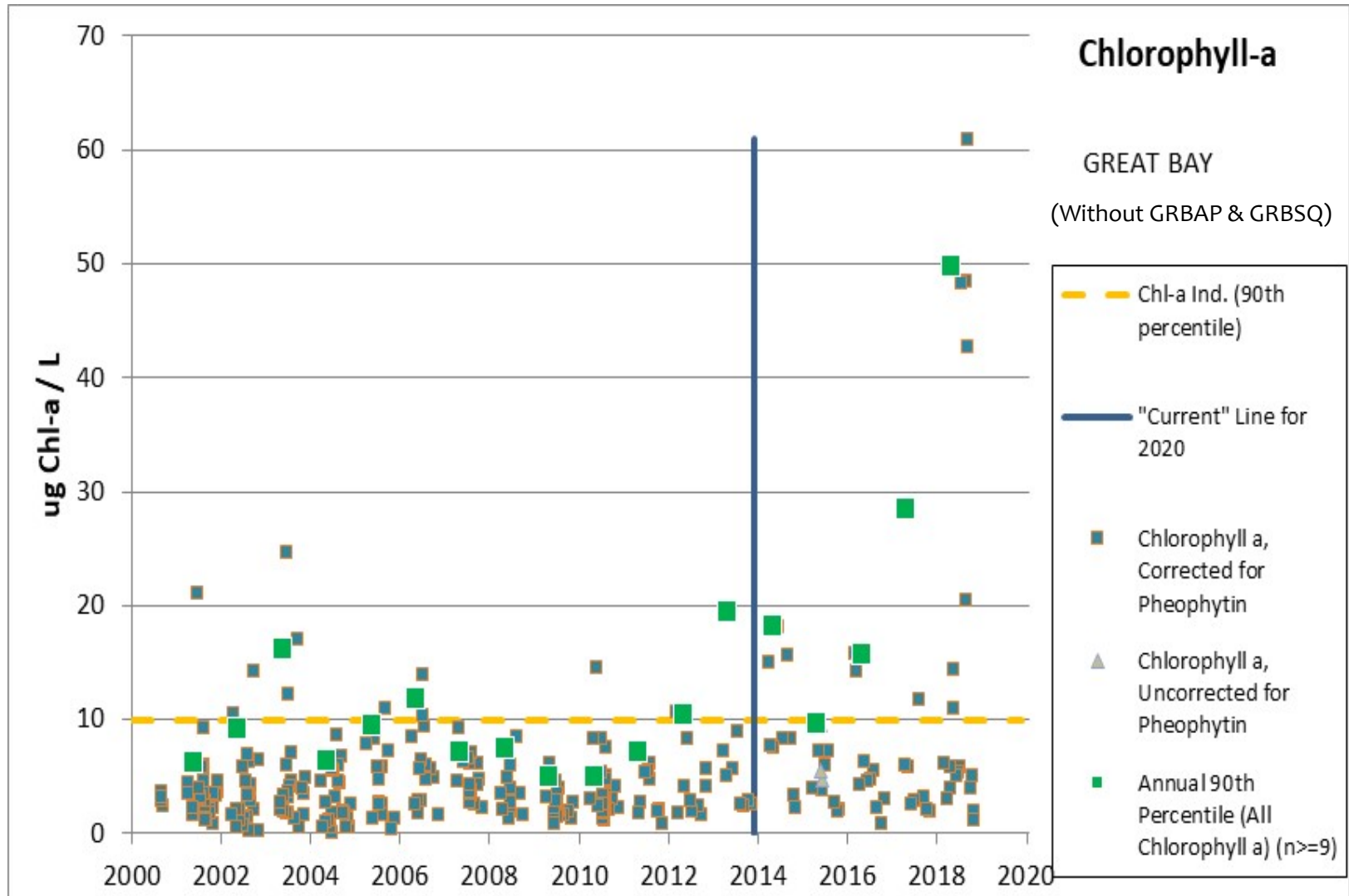
Great Bay

Great Bay –

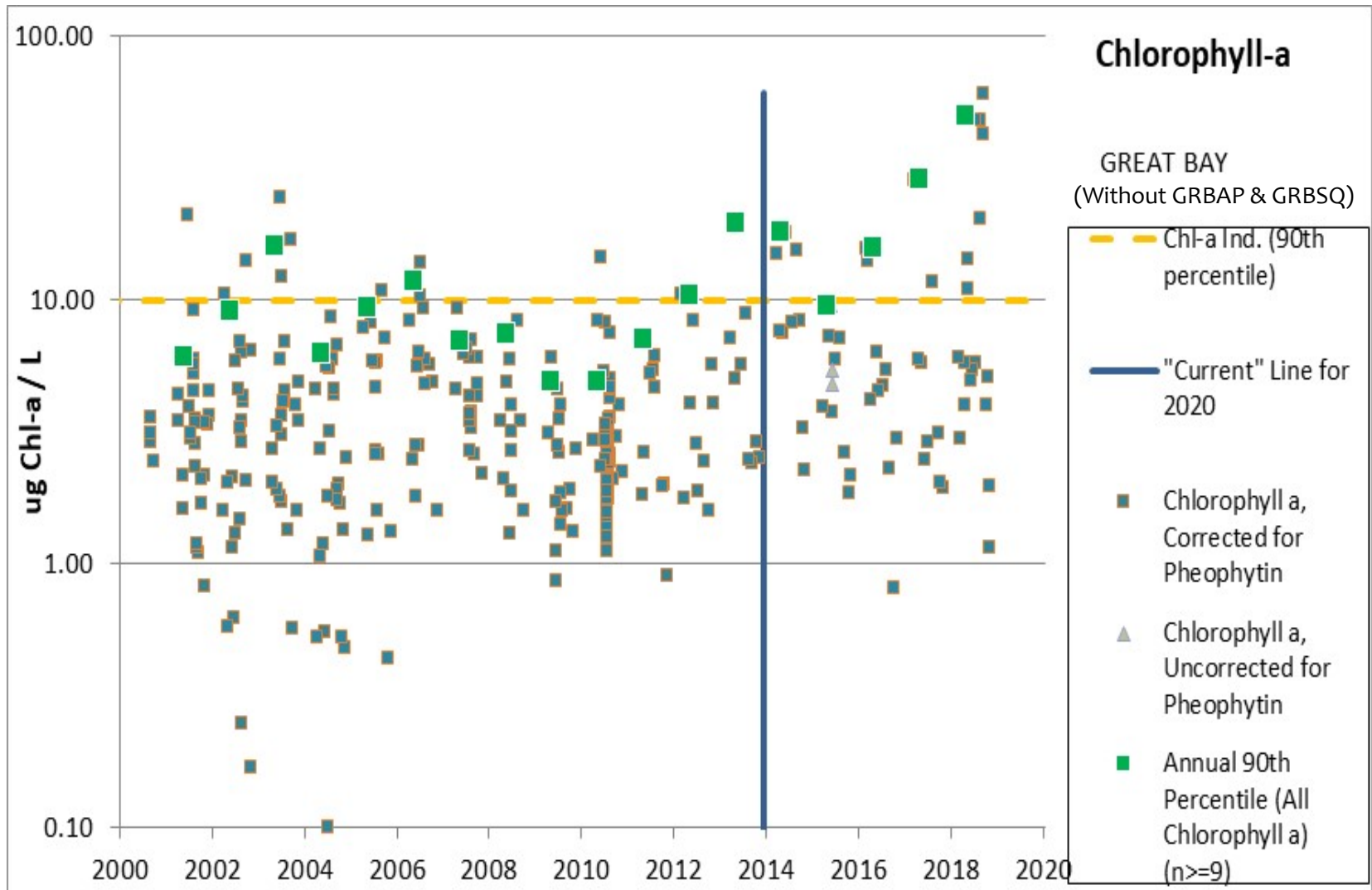
- Added
 - Chlorophyll-a
 - Nitrogen (Total)
- Existing Impairments
 - Eelgrass (2008)
 - Light Attenuation (2008)



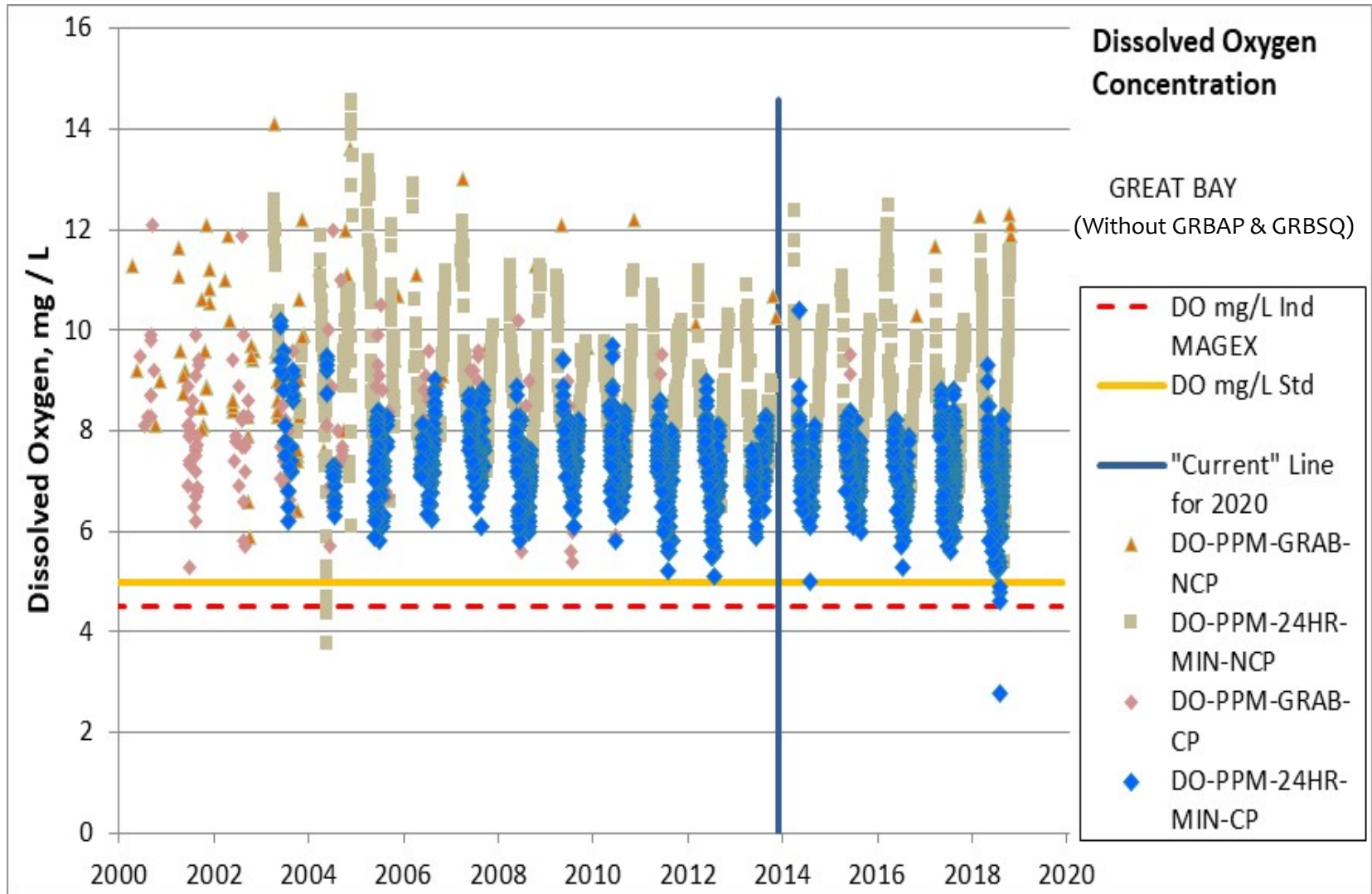
Great Bay



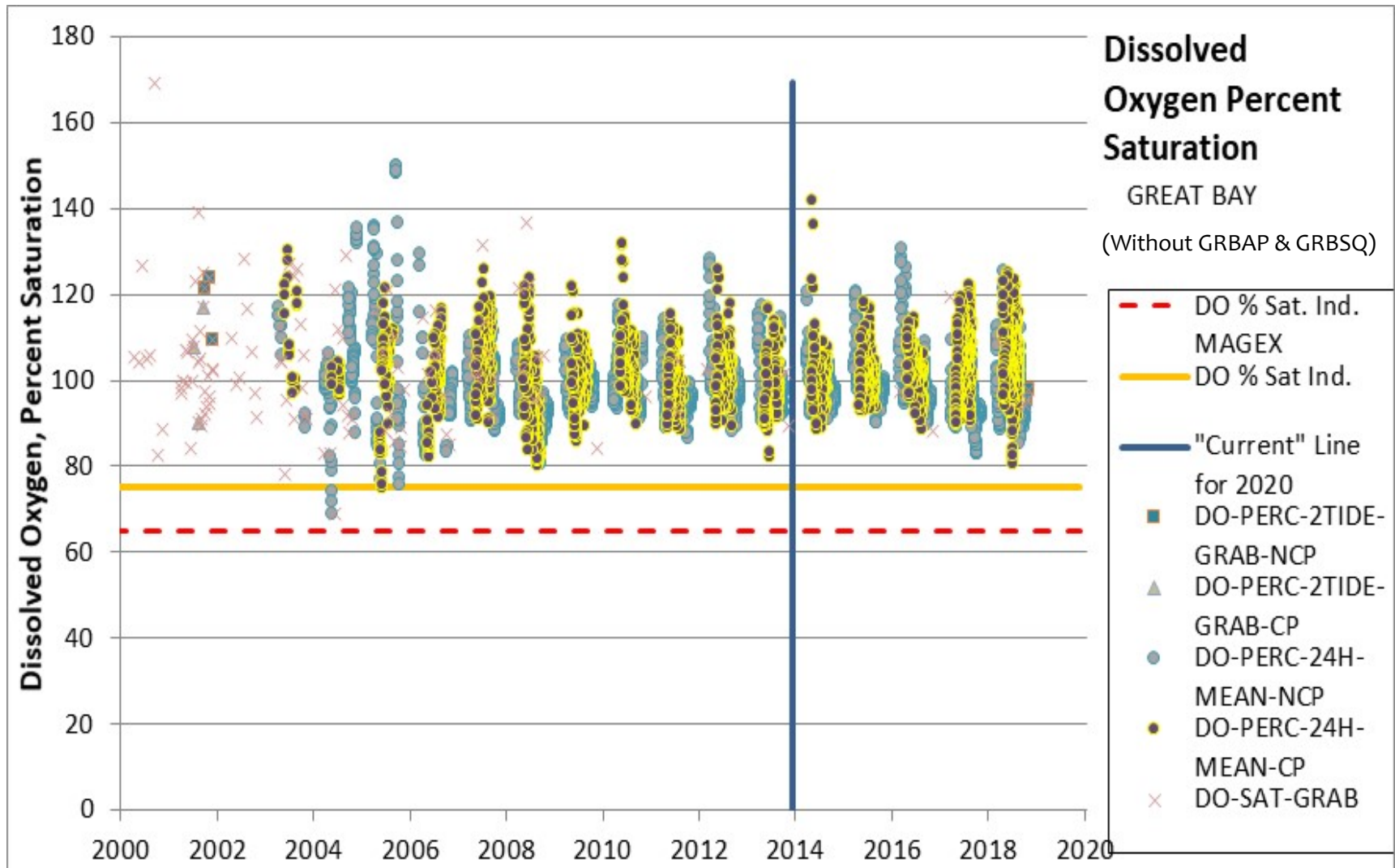
Great Bay



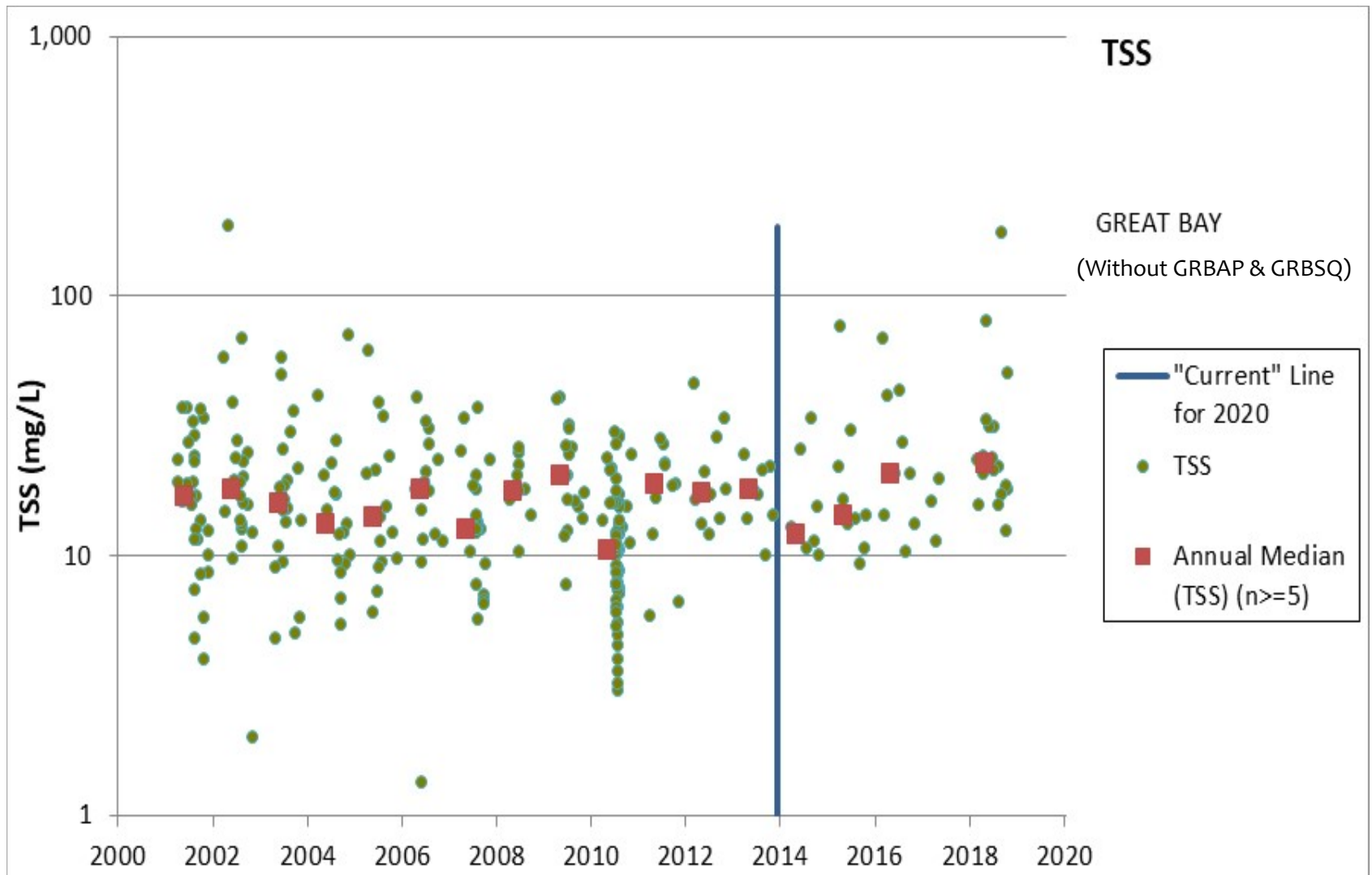
Great Bay



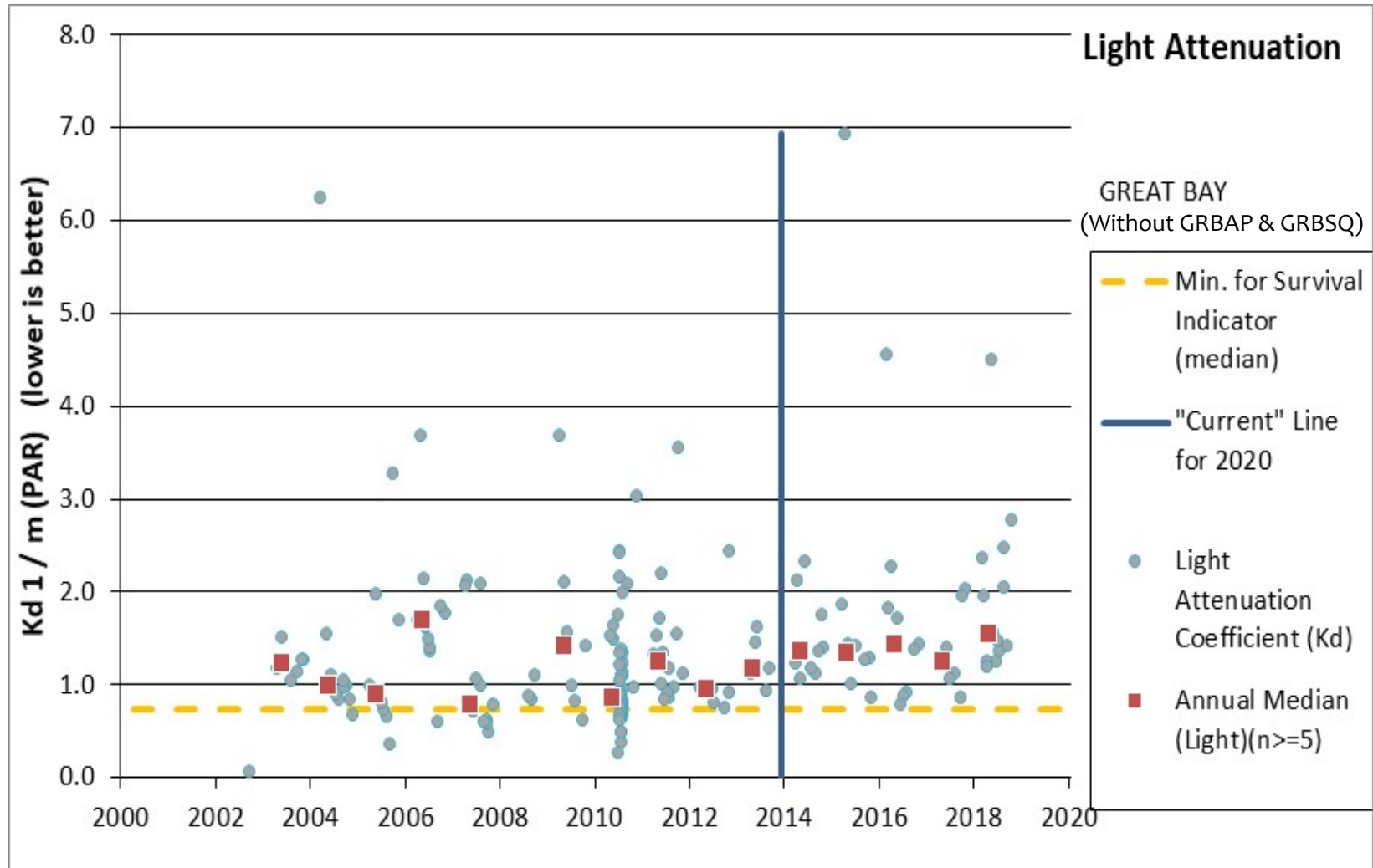
Great Bay



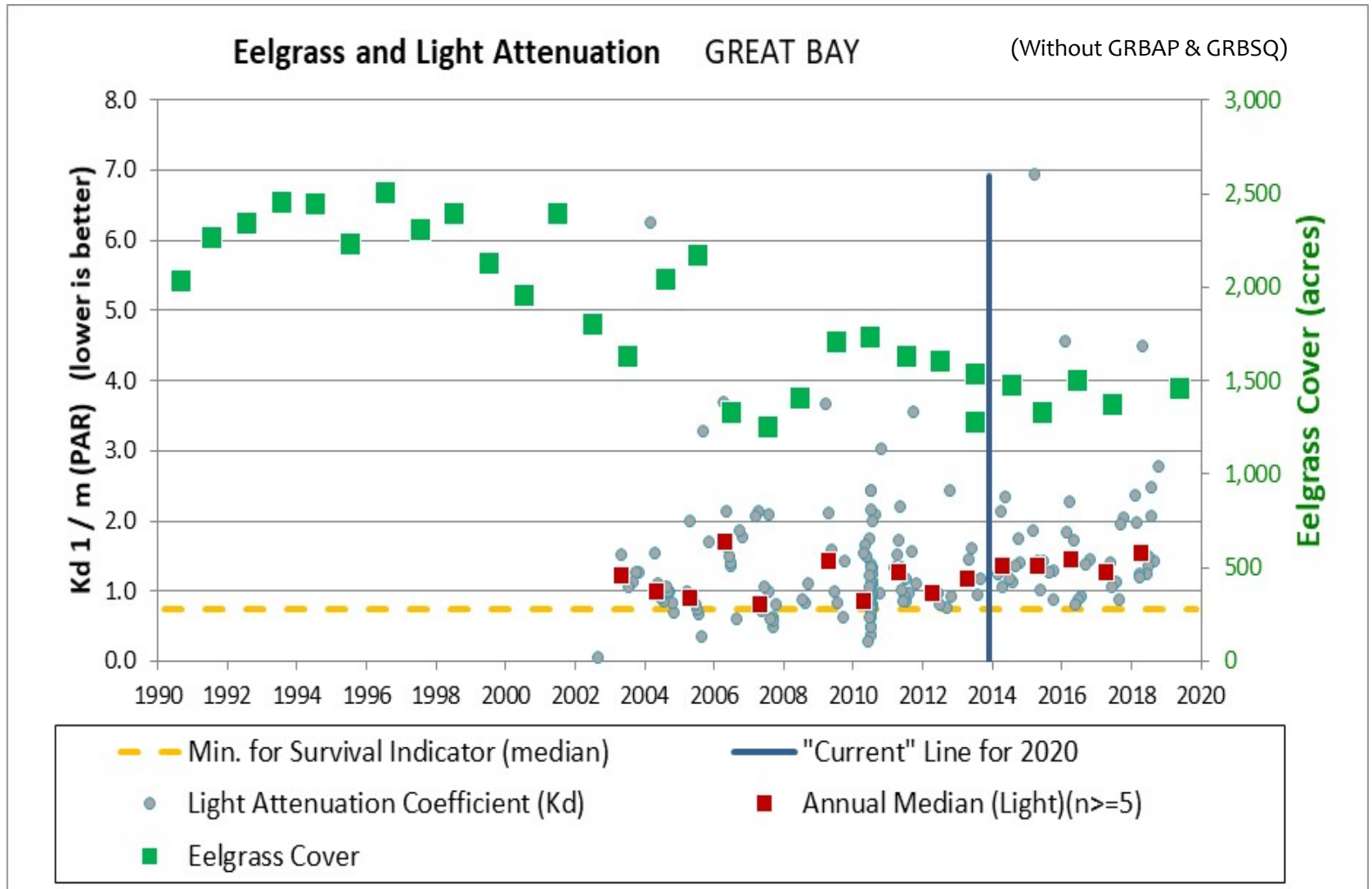
Great Bay



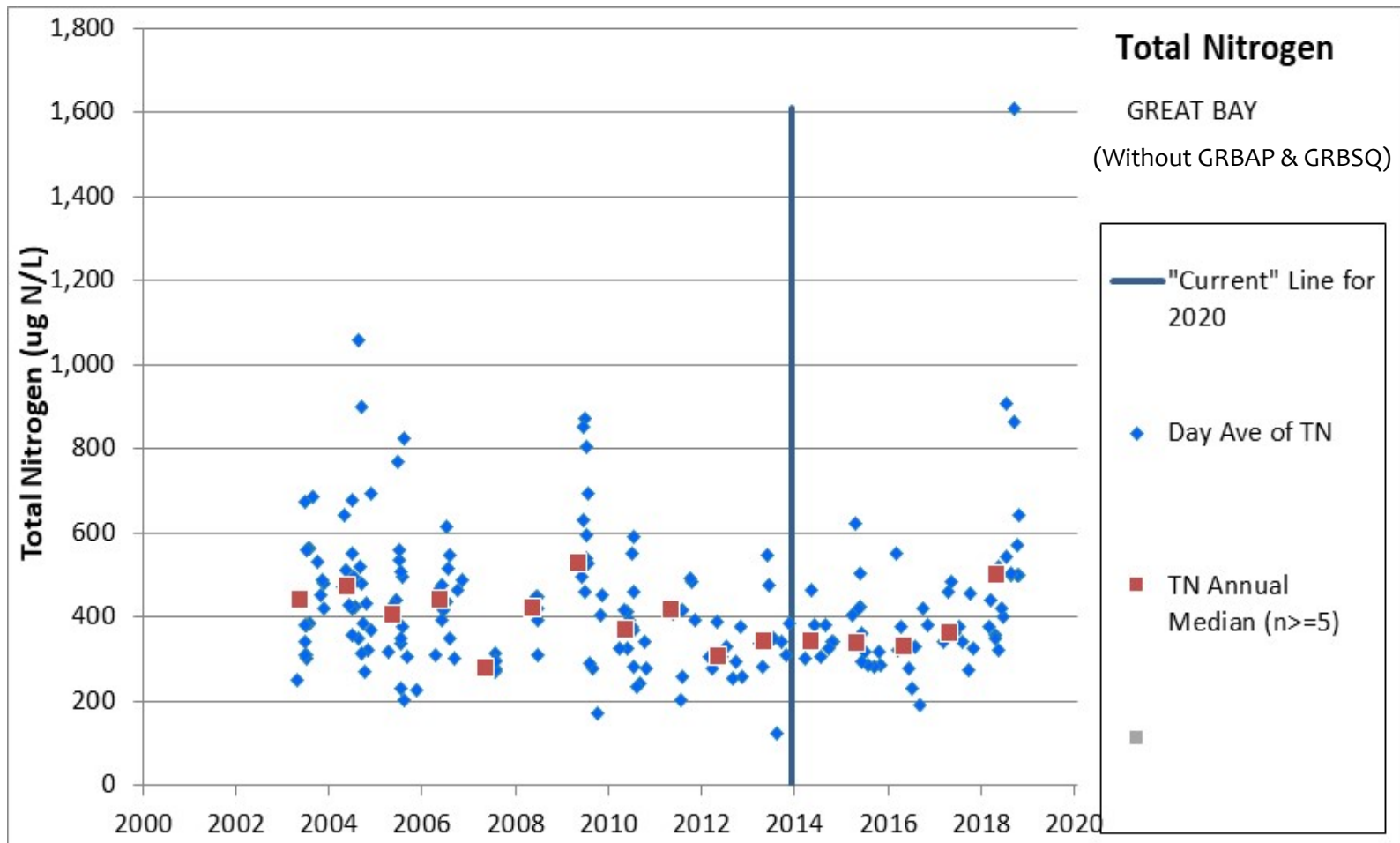
Great Bay



Great Bay



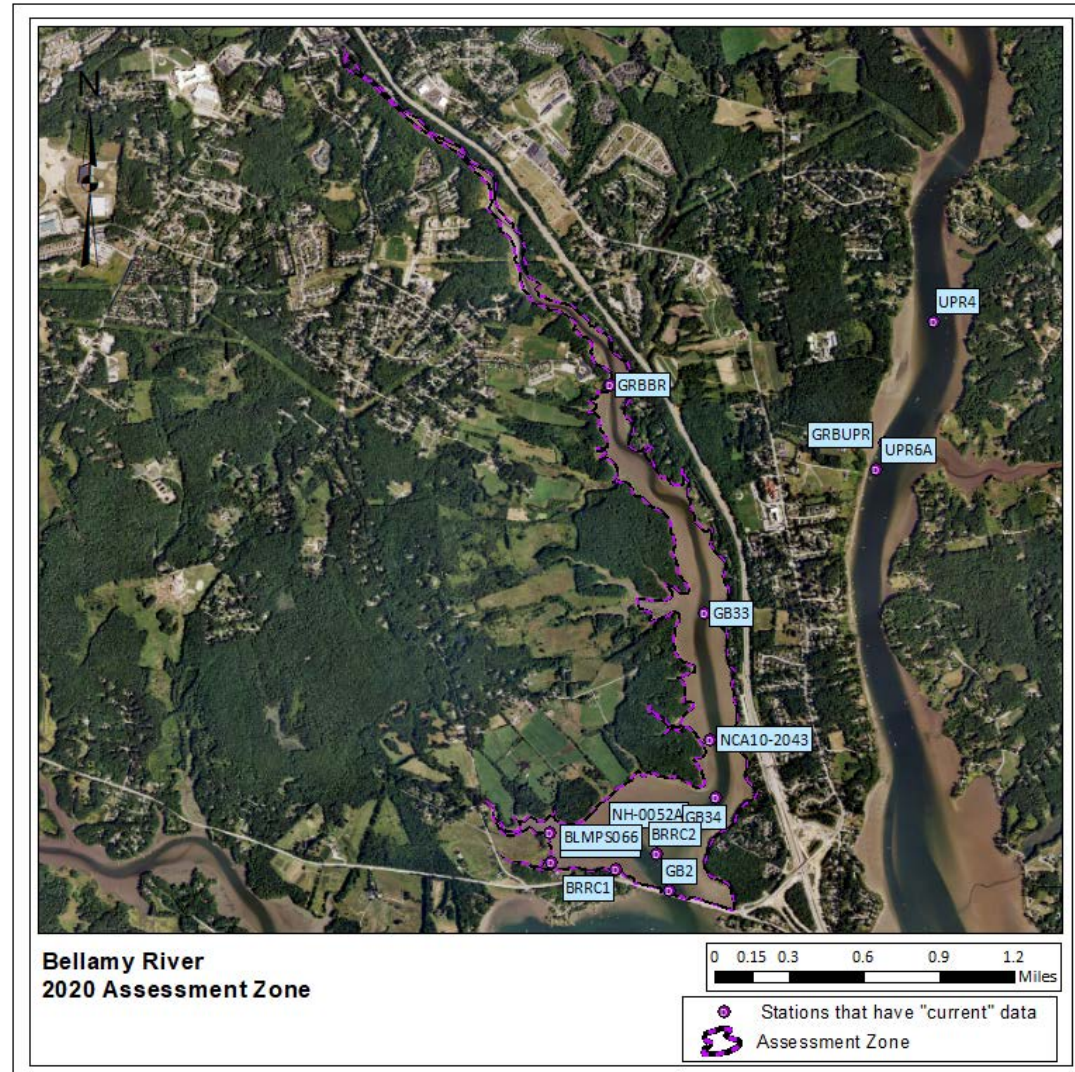
Great Bay



Bellamy River

Bellamy River –

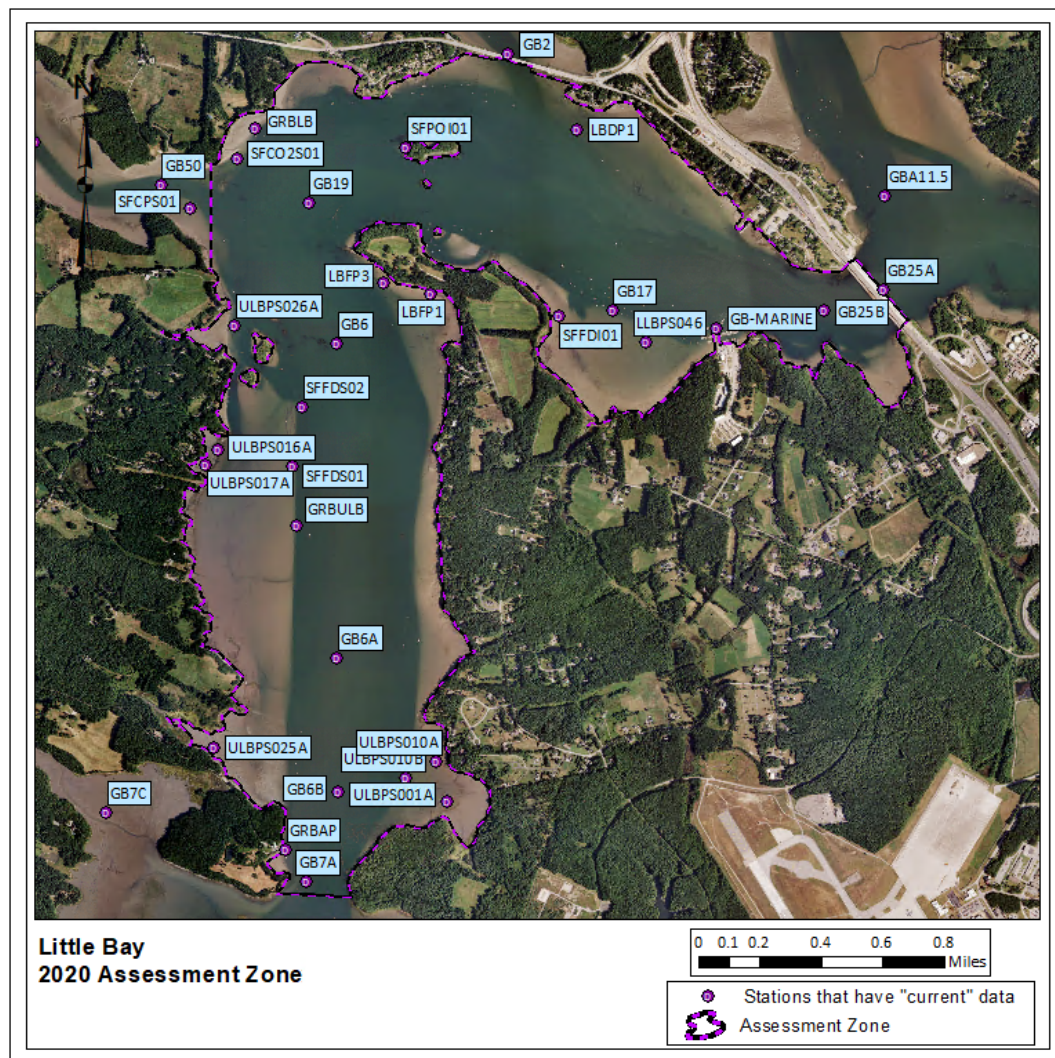
- Added
 - Chlorophyll-a
 - Light Attenuation
 - Nitrogen (Total)
 - DO (mg/L)
- Existing Impairments
 - Eelgrass (2008)



Little Bay

Little Bay –

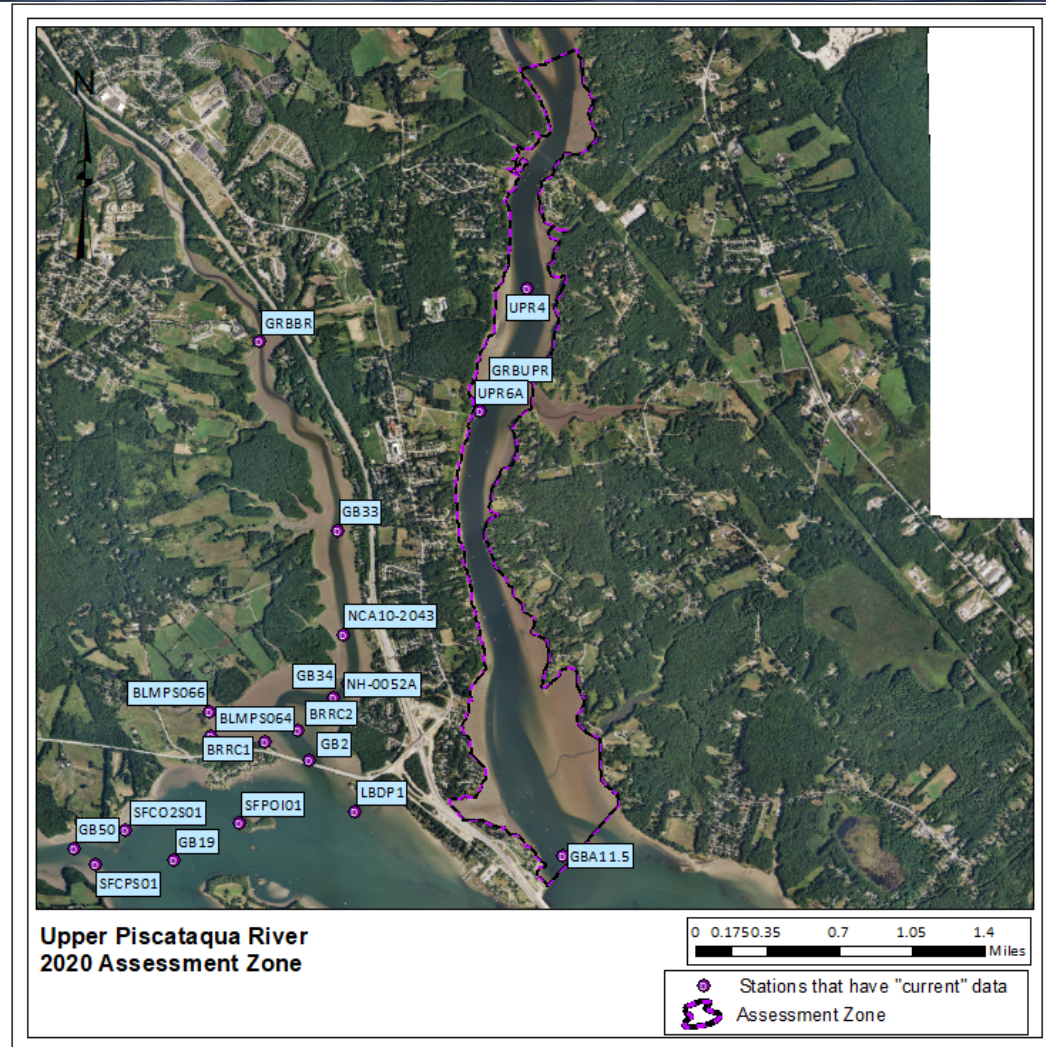
- Added
 - -None-
- Existing Impairments
 - Eelgrass (2008)
 - Light Attenuation (2008)



Upper Piscataqua River

Upper Piscataqua River –

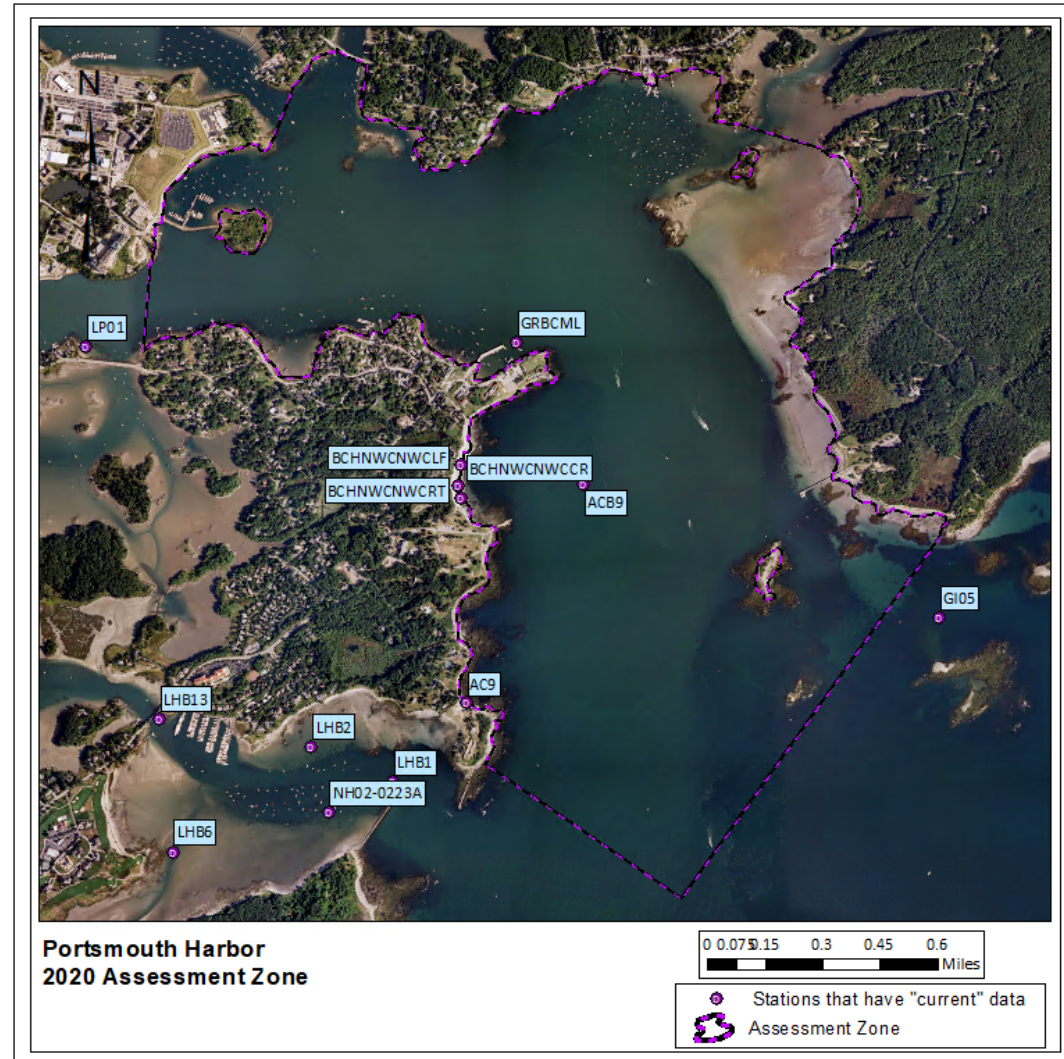
- Added
 - -None-
- Existing Impairments
 - Eelgrass (2008)
 - Light Attenuation (2008)



Portsmouth Harbor

Portsmouth Harbor –

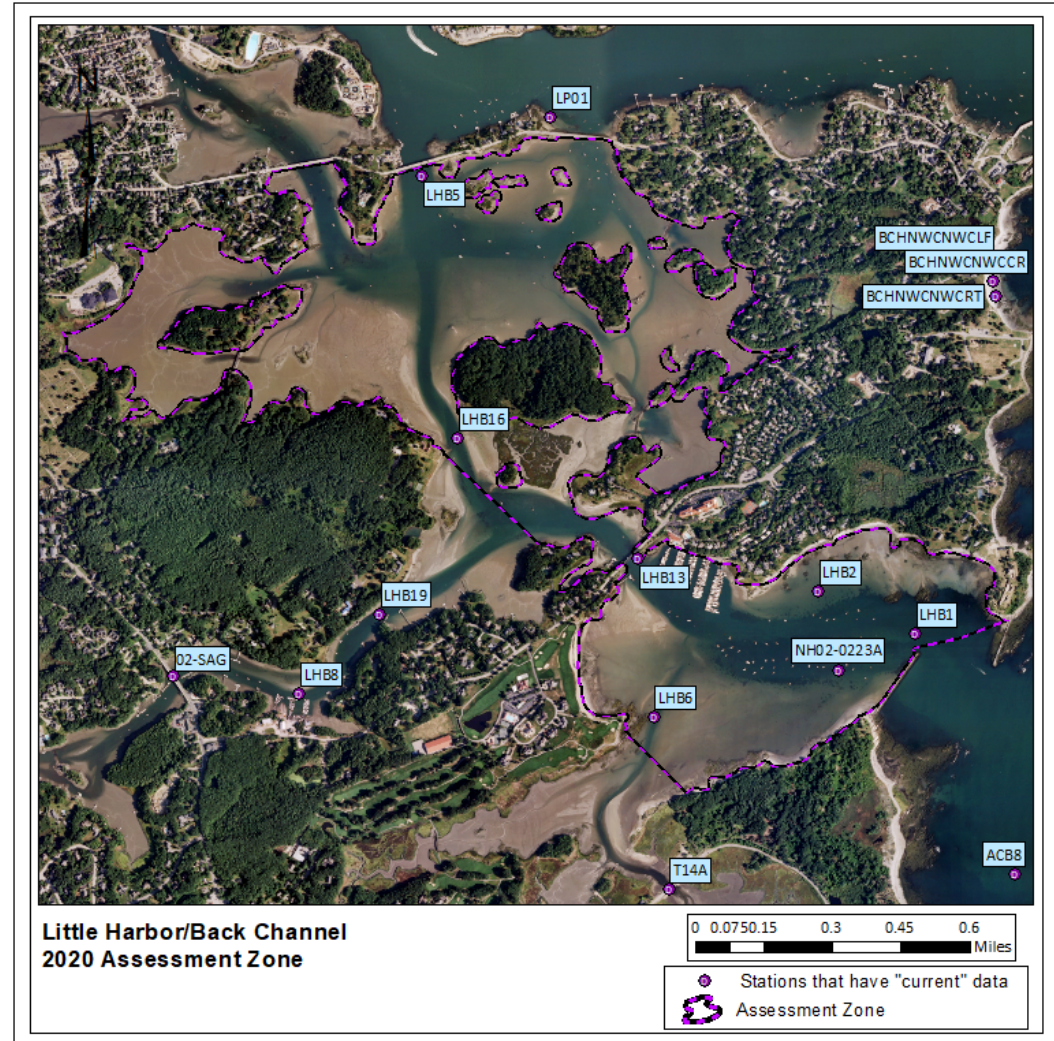
- Added
 - -None-
- Existing Impairments
 - Eelgrass (2008)
 - Light Attenuation (2008)



Little Harbor / Back Channel

Little Harbor / Back Channel –

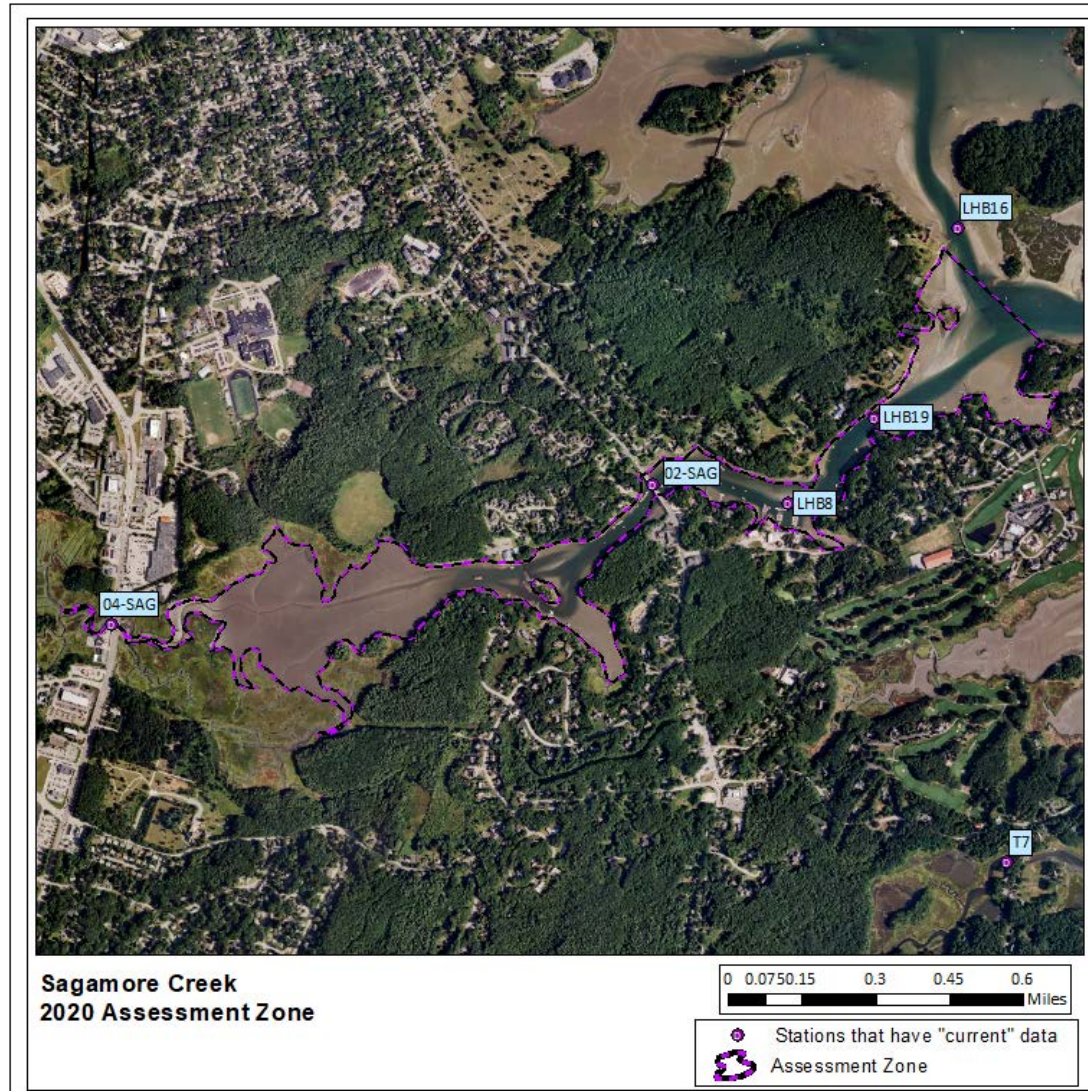
- Added
 - -None-
- Existing Impairments
 - Eelgrass (2008)
 - Light Attenuation (2008)



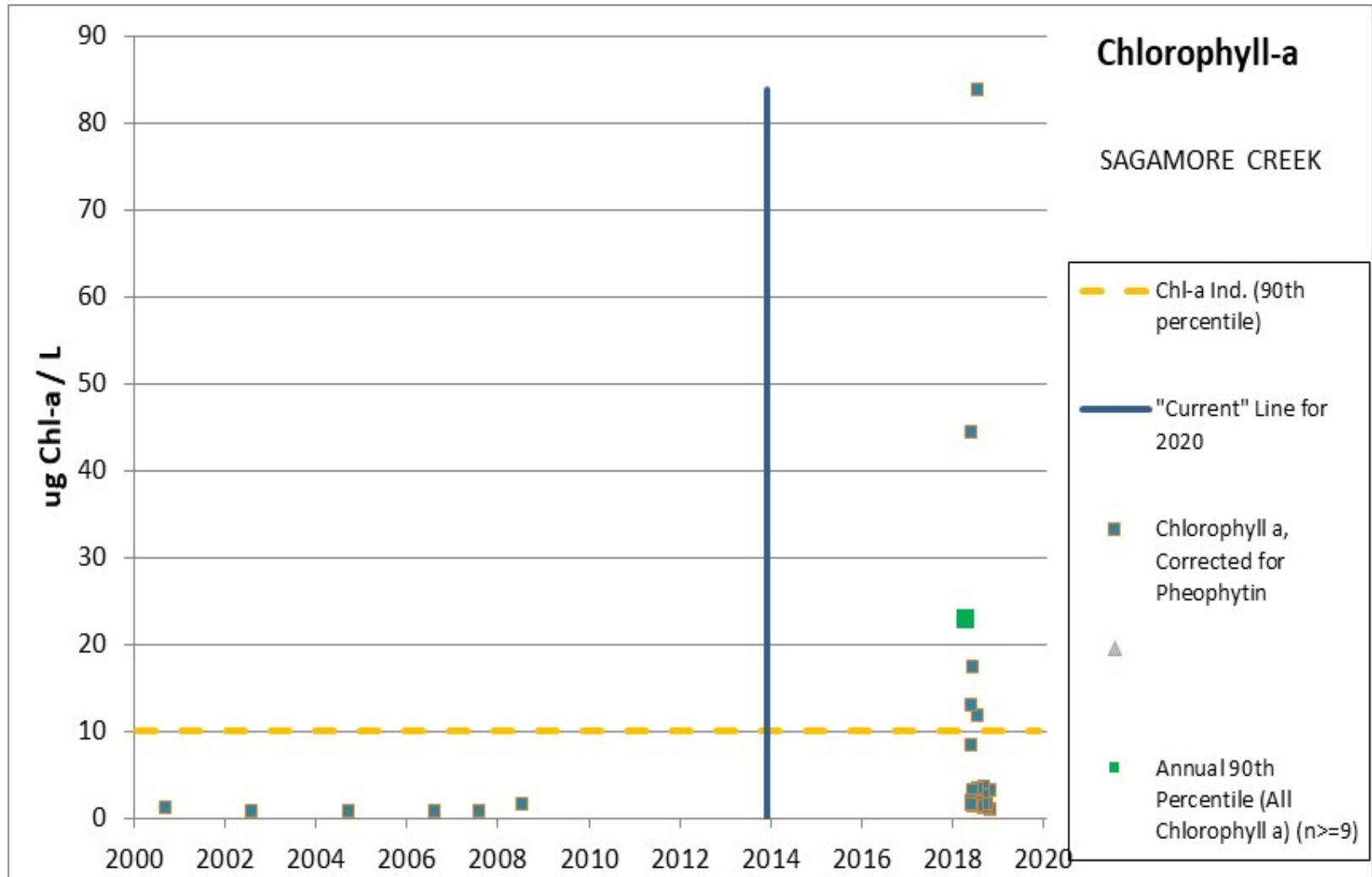
New GBE Impairment

Sagamore Creek –

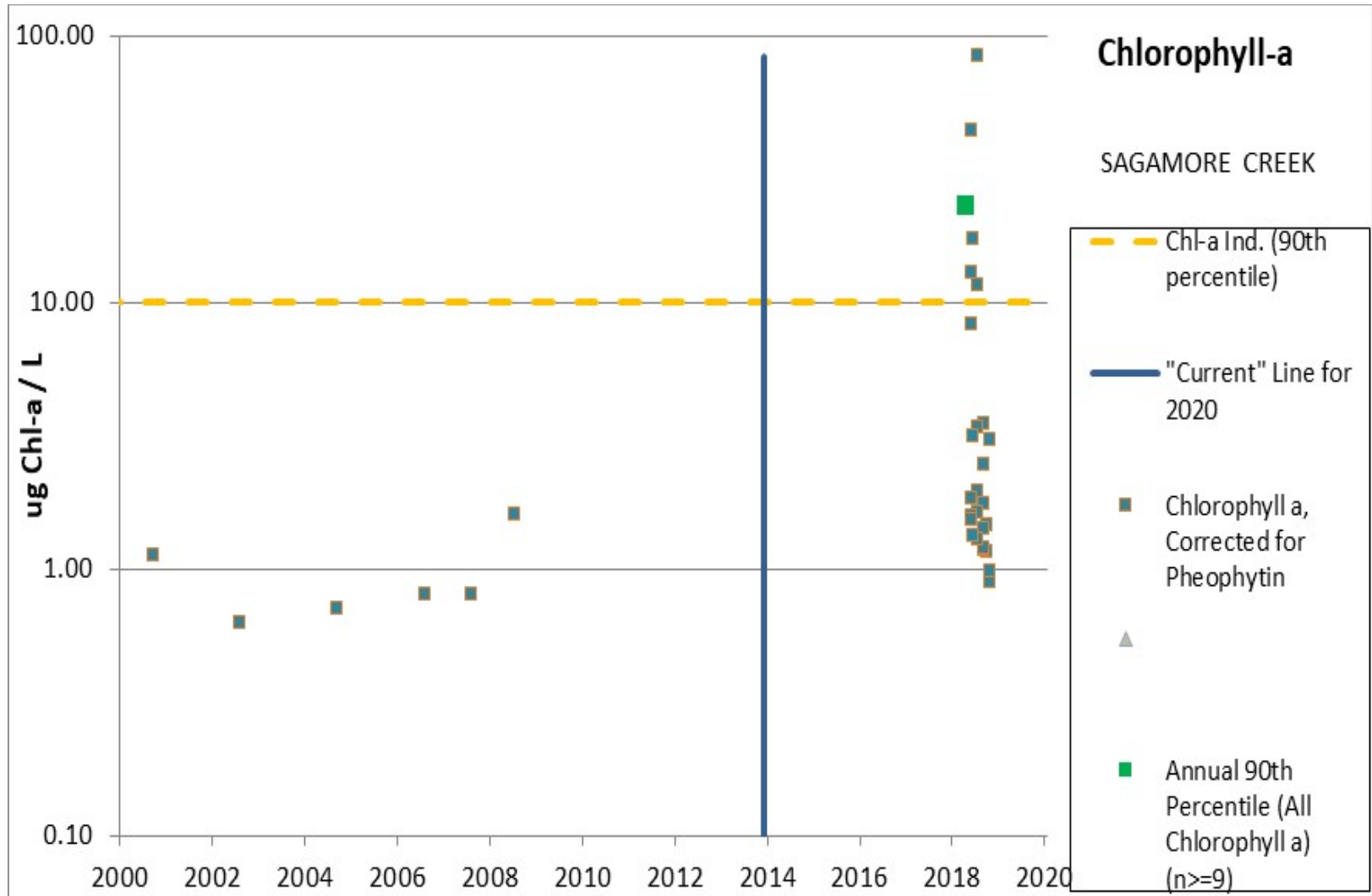
- Added
 - Chlorophyll-a
 - Nitrogen (Total)
- Existing Impairments
 - DO (mg/L) (2018)
 - Eelgrass (2008)



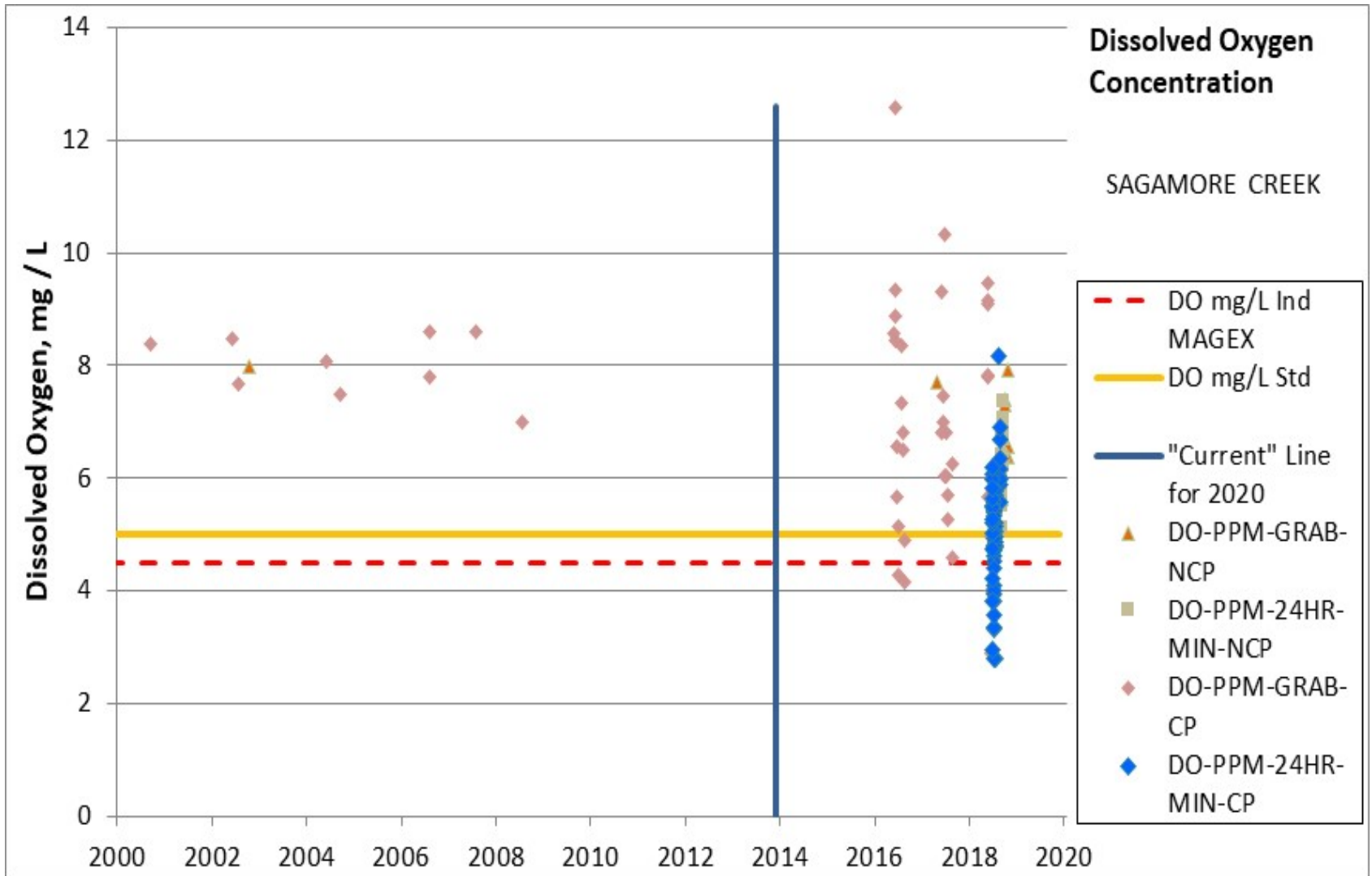
Sagamore Creek



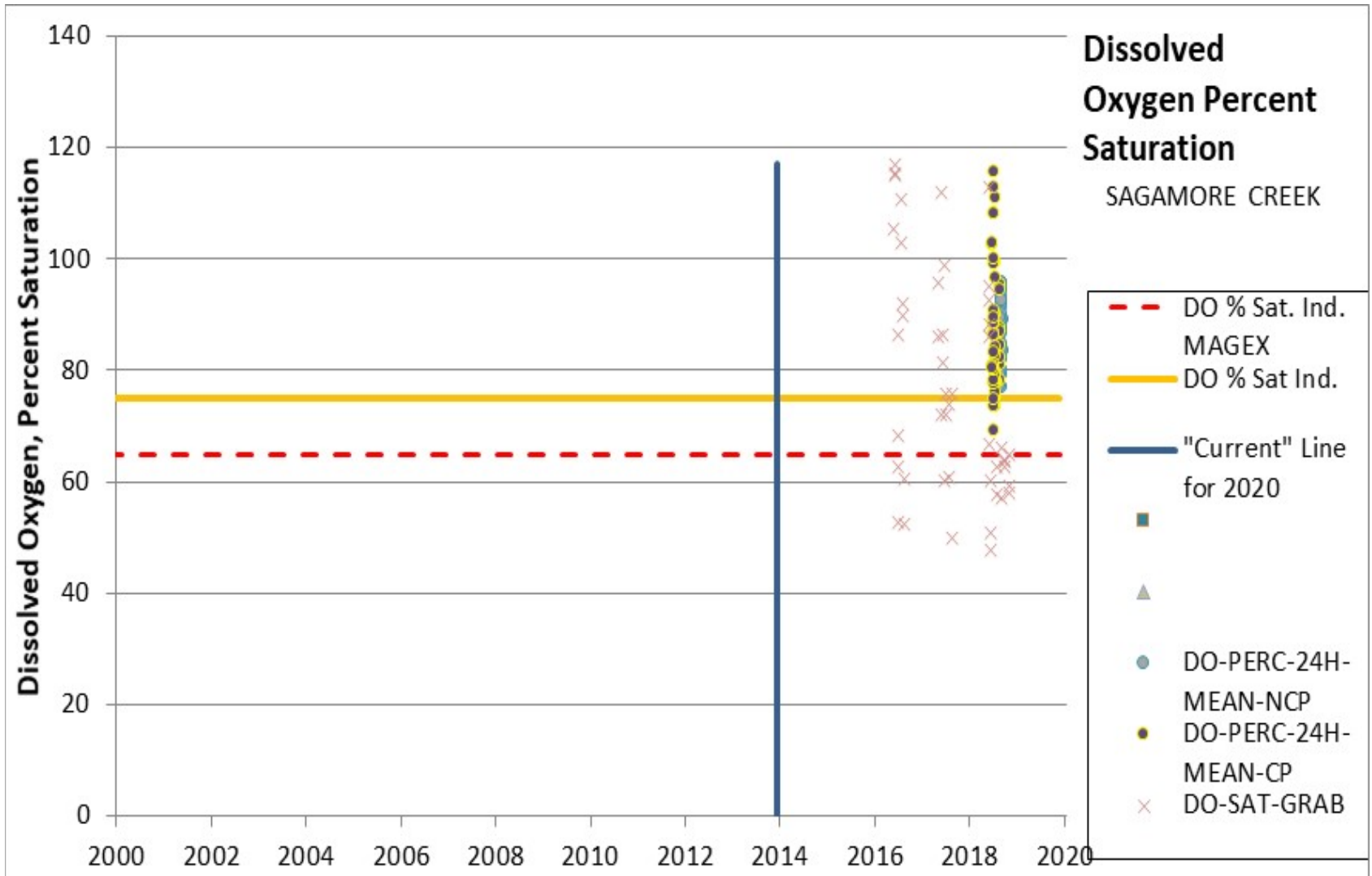
Sagamore Creek



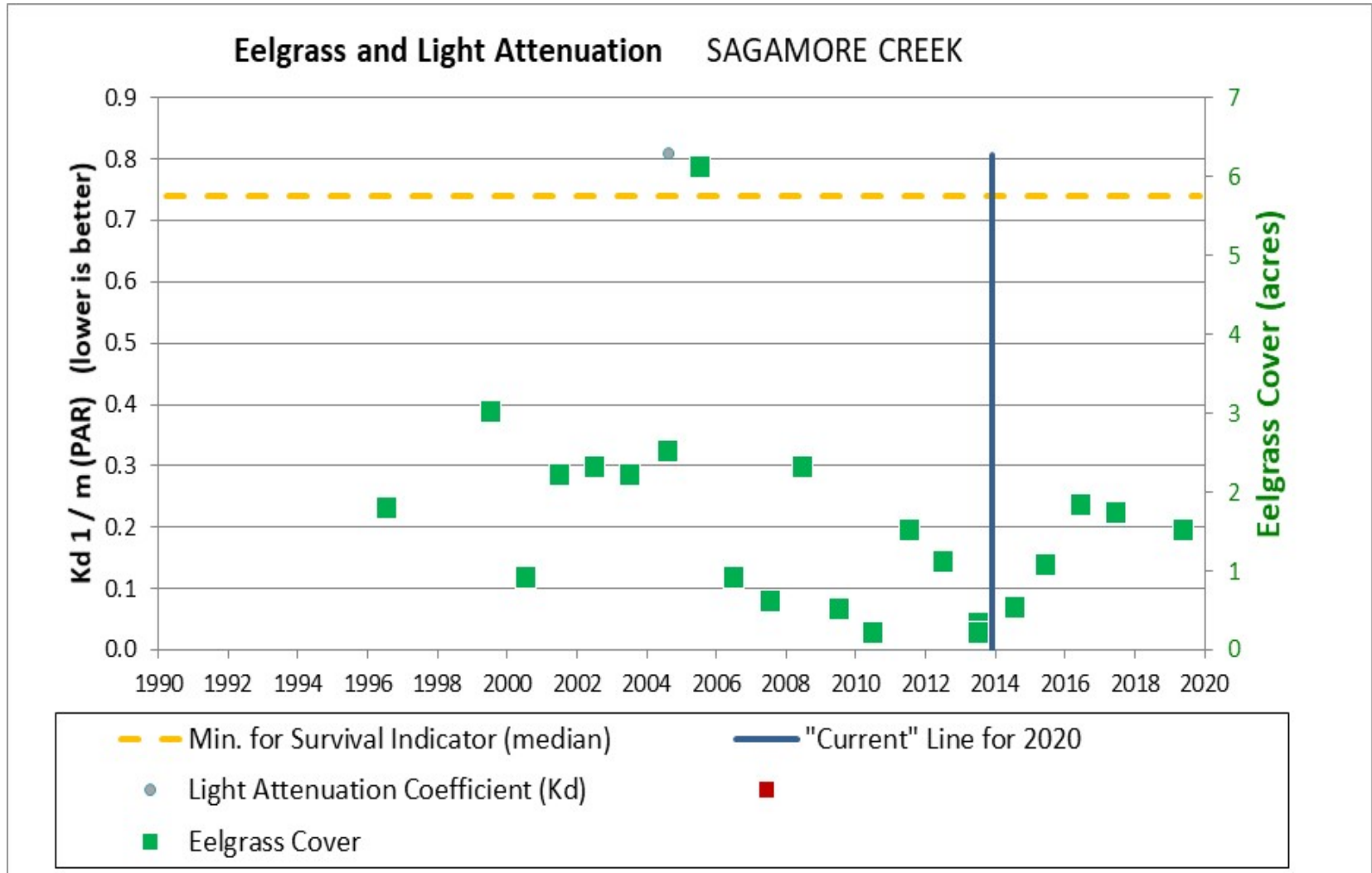
Sagamore Creek



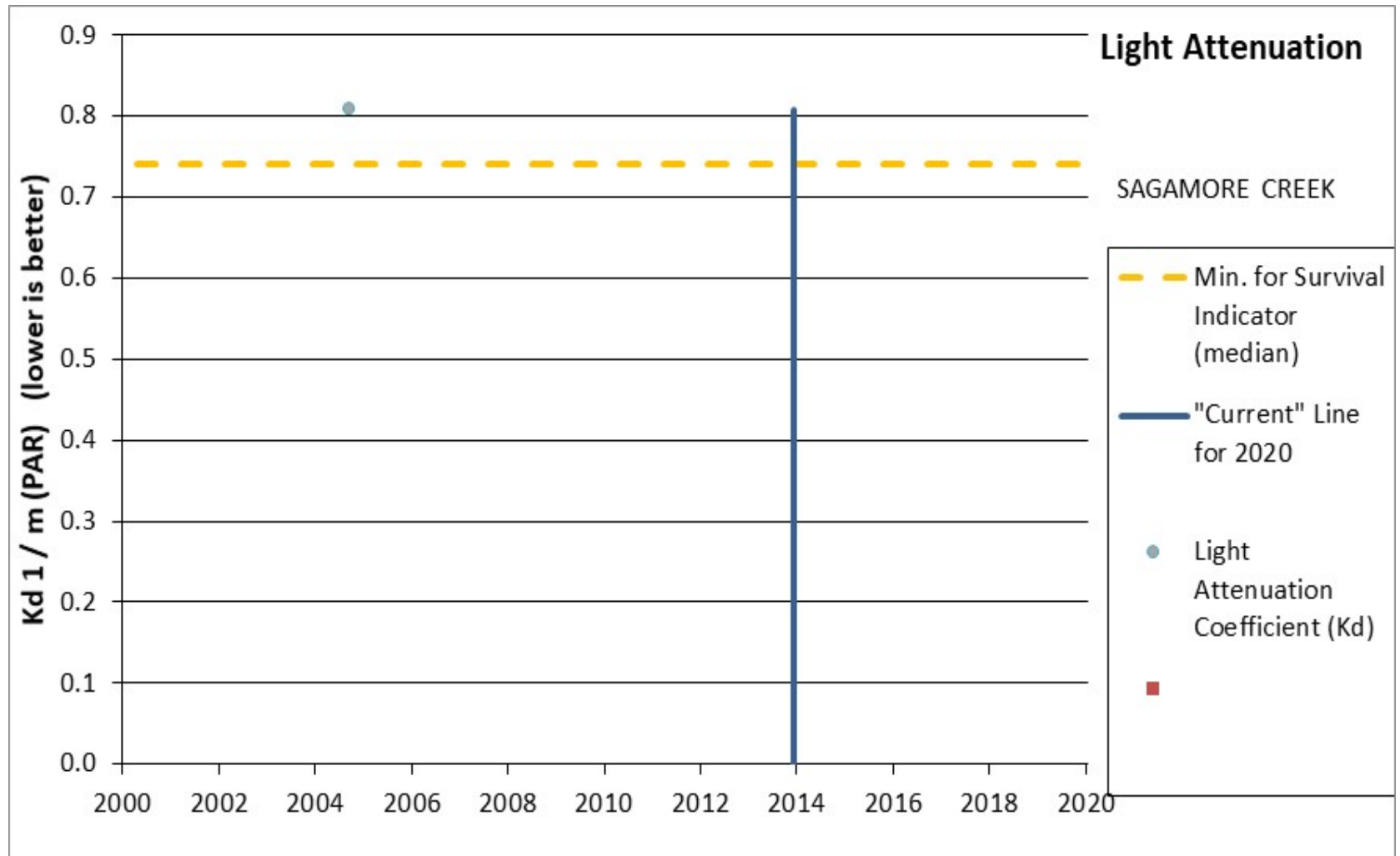
Sagamore Creek



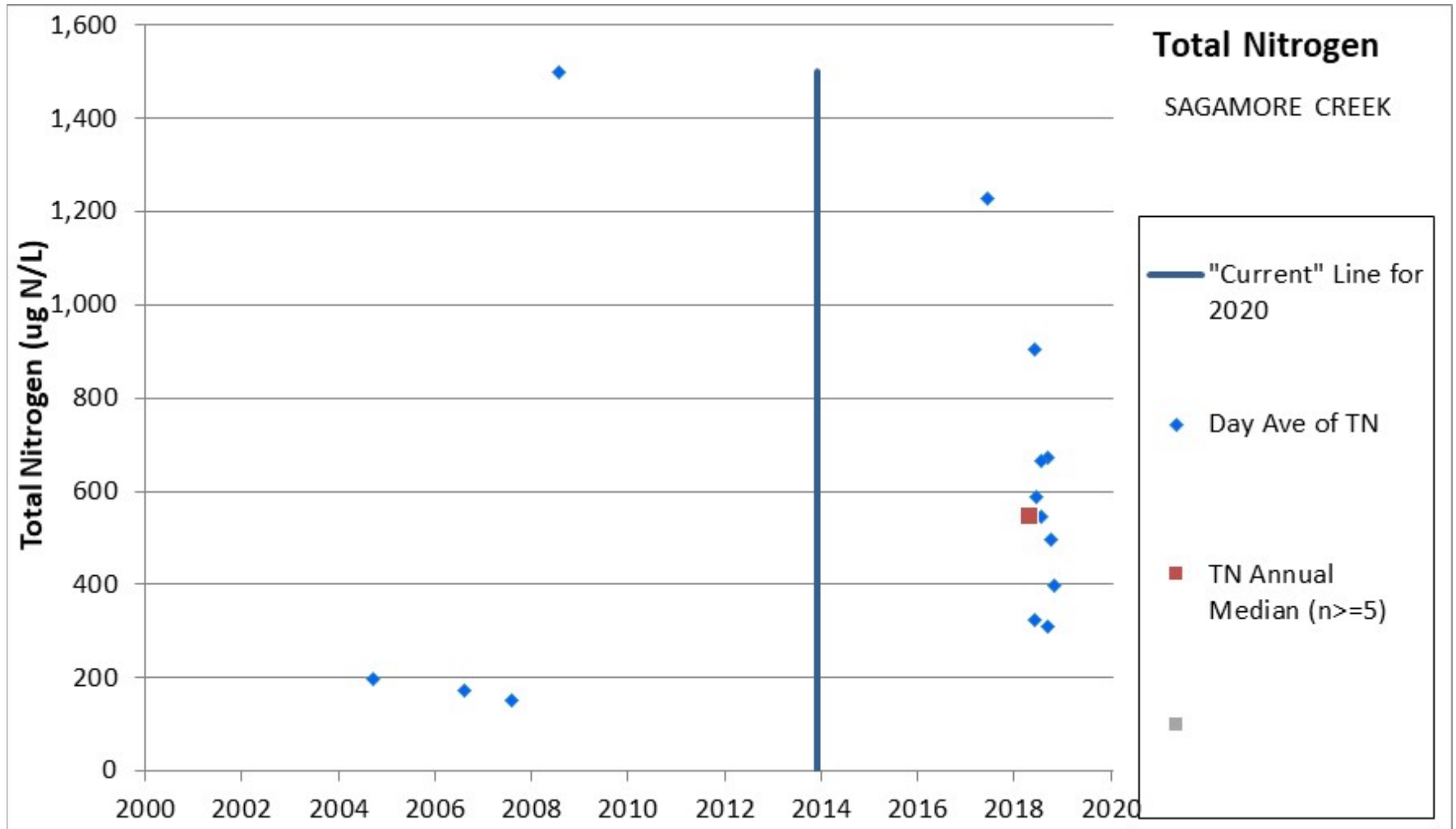
Sagamore Creek



Sagamore Creek



Sagamore Creek



GBE Zones with New TN Impairments

Great Bay –

- Added
 - Chlorophyll-a
 - Nitrogen (Total)
- *Existing Impairments*
 - *Eelgrass (2008)*
 - *Light Attenuation (2008)*

Bellamy River –

- Added
 - Chlorophyll-a
 - Light Attenuation
 - Nitrogen (Total)
 - DO (mg/L)
- *Existing Impairments*
- *Eelgrass (2008)*

Sagamore Creek –

- Added
 - Chlorophyll-a
 - Nitrogen (Total)
- *Existing Impairments*
 - *DO (mg/L) (2018)*
 - *Eelgrass (2008)*

GBE Zones without TN Impairments

Little Bay –

- *Existing Impairments*
 - *Eelgrass (2008)*
 - *Light Attenuation (2008)*

Upper Piscataqua River –

- *Existing Impairments*
 - *Eelgrass (2008)*
 - *Light Attenuation (2008)*

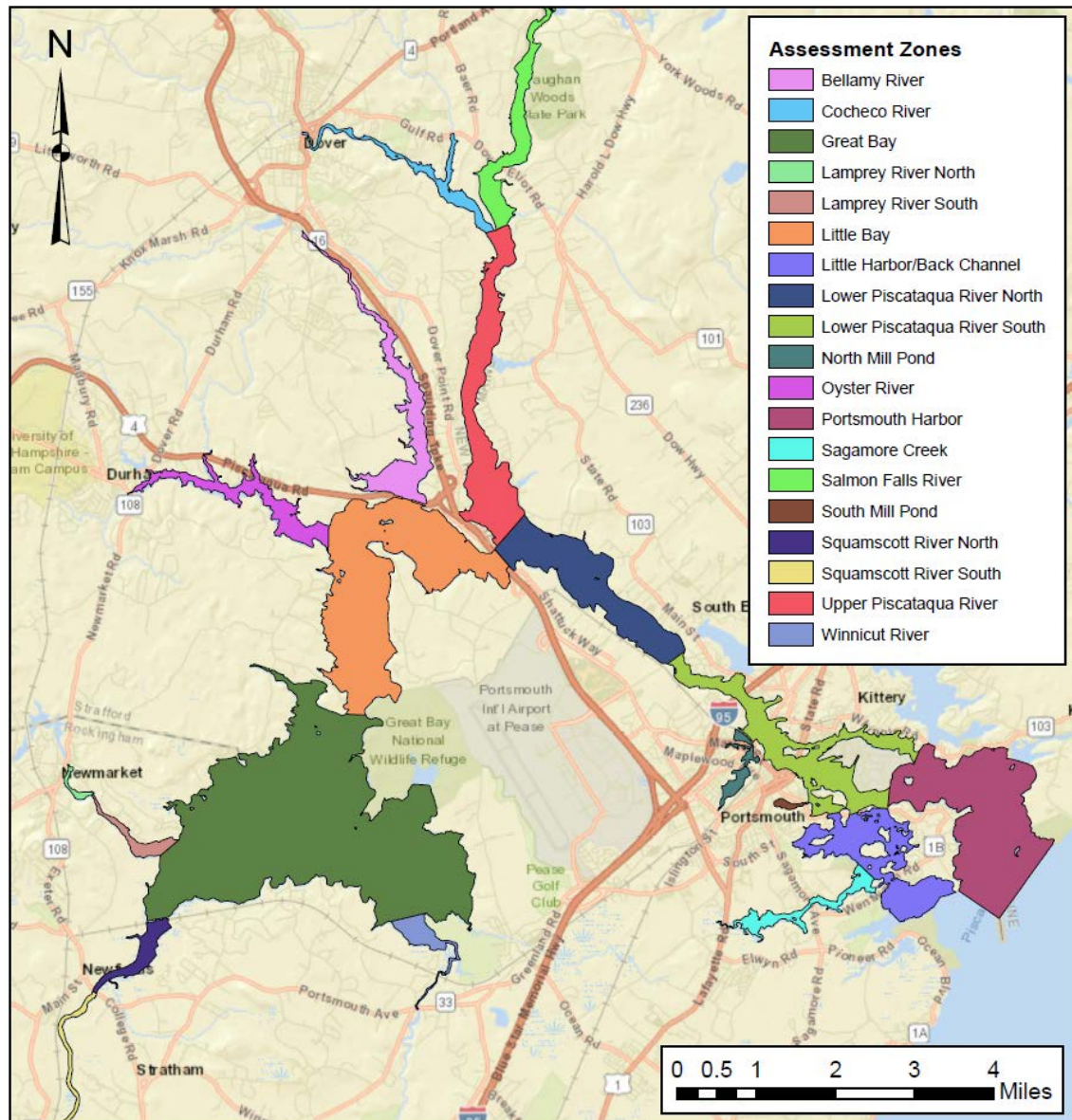
Portsmouth Harbor –

- *Existing Impairments*
 - *Eelgrass (2008)*
 - *Light Attenuation (2008)*

Little Harbor Back Channel –

- *Existing Impairments*
 - *Eelgrass (2008)*
 - *Light Attenuation (2008)*

Discussion



Questions?

Matt Wood, NHDES Water Quality Assessment Program Coordinator

Matthew.Wood@des.nh.gov

Ken Edwardson, NHDES Senior Scientist

Kenneth.Edwardson@des.nh.gov

<http://des.nh.gov/organization/divisions/water/wmb/swqa/index.htm>

