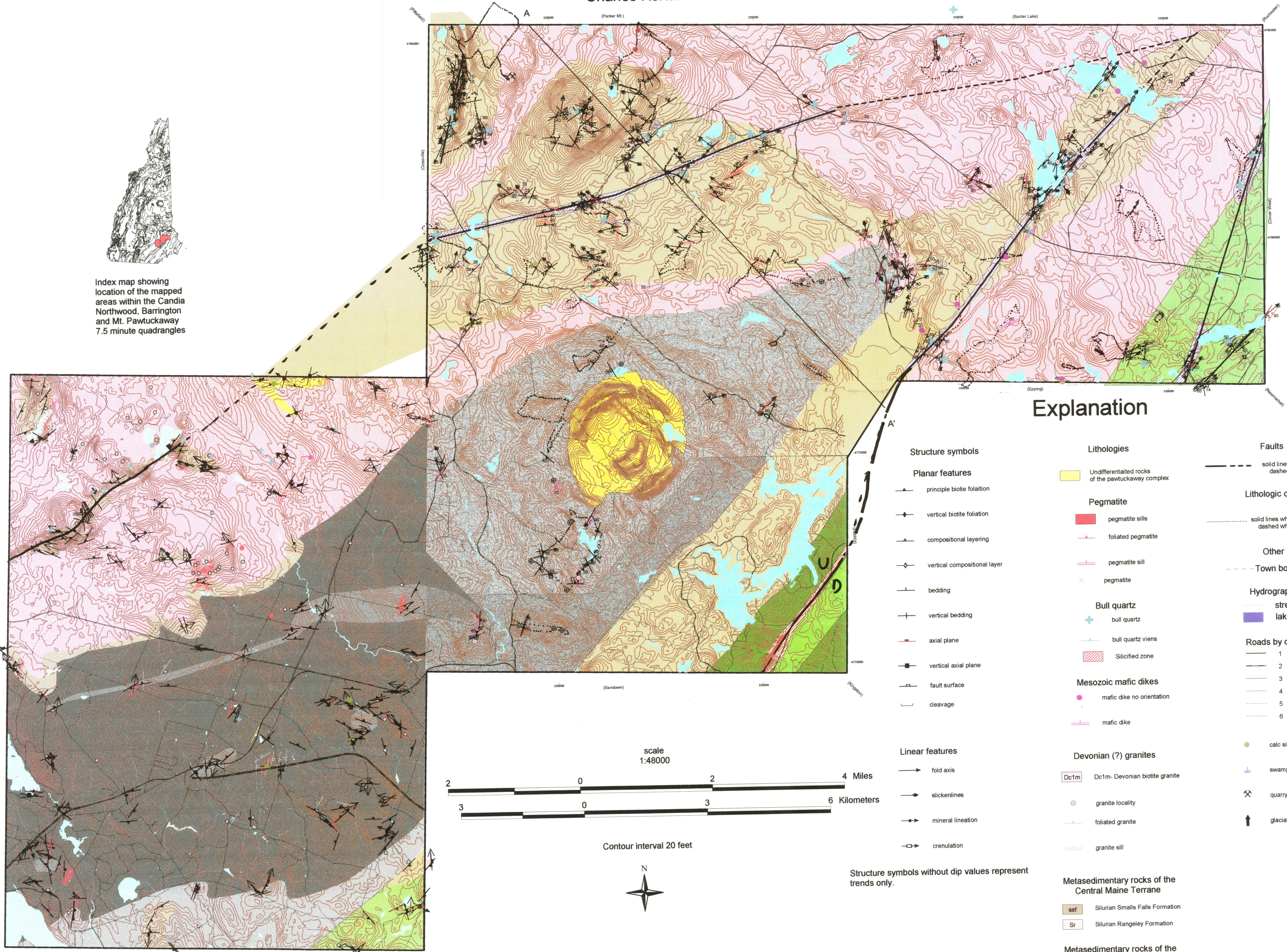


Geology of the Candia 7.5 minute quadrangle, and portions of the Northwood, Barrington and Mt. Pawtuckaway 7.5 minute quadrangles

Charles Kerwin

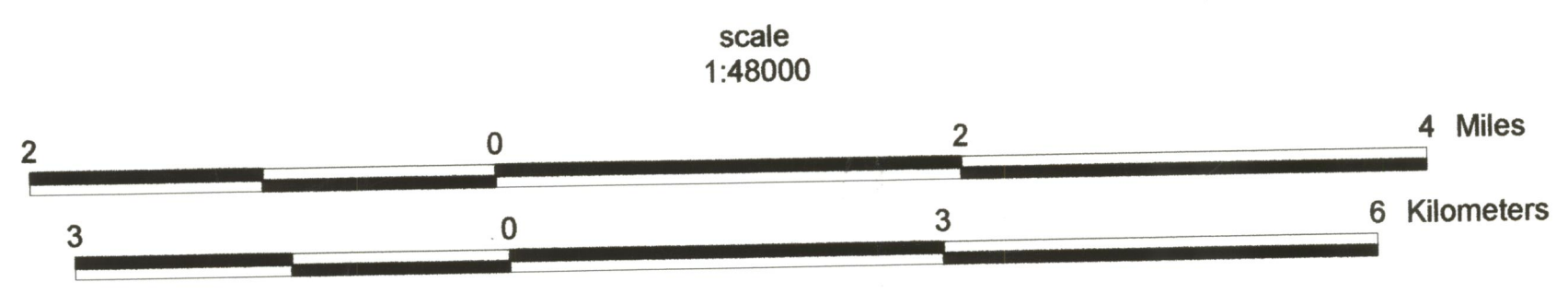


Index map showing location of the mapped areas within the Candia, Northwood, Barrington and Mt. Pawtuckaway 7.5 minute quadrangles



Explanation

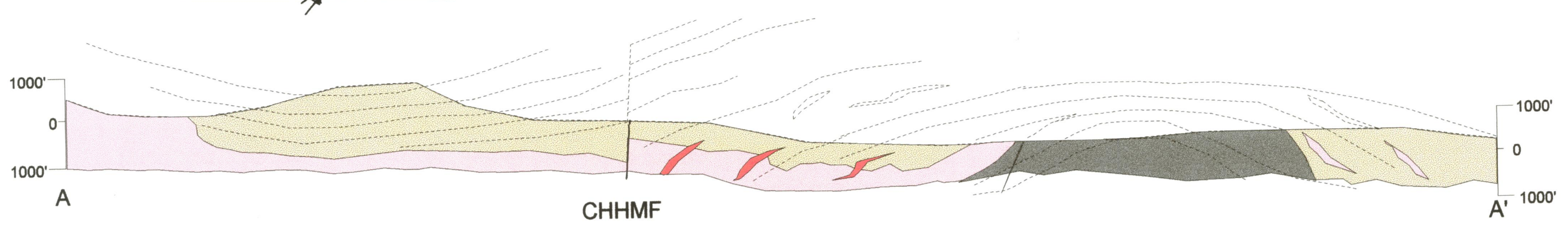
- Structure symbols**
 - principle biotite foliation
 - vertical biotite foliation
 - compositional layering
 - vertical compositional layer
 - bedding
 - vertical bedding
 - axial plane
 - vertical axial plane
 - fault surface
 - cleavage
- Planar features**
 - fold axis
 - slickenlines
 - mineral lineation
 - crenulation
- Linear features**
 - fold axis
 - slickenlines
 - mineral lineation
 - crenulation
- Lithologies**
 - Undifferentiated rocks of the pawtuckaway complex
- Pegmatite**
 - pegmatite sills
 - foliated pegmatite
 - pegmatite sill
 - pegmatite
- Bull quartz**
 - bull quartz
 - bull quartz veins
 - Silicified zone
- Mesozoic mafic dikes**
 - mafic dike no orientation
 - mafic dike
- Devonian (?) granites**
 - Dc1m- Devonian biotite granite
 - granite locality
 - foliated granite
 - granite sill
- Metasedimentary rocks of the Central Maine Terrane**
 - Ssf Silurian Smalls Falls Formation
 - Sr Silurian Rangeley Formation
- Metasedimentary rocks of the Merrimack trough**
 - SOb Siluro-Ordovician Berwick Formation
 - SObc Siluro-Ordovician Berwick calc-silicate bearing
 - SObg Siluro-Ordovician Berwick Gove submember
 - transition zone
- Massabesic Gneiss Complex**
 - mgc3 Type 3 migmatites, continuous felsic layers with discontinuous to swirly biotite foliation.
 - mgc2 Type 2 migmatites, continuous biotite foliation and continuous felsic layers.
 - mgc1 Type 1 migmatites, continuous biotite foliation with discontinuous felsic layers or lenses.
 - Massabesic Gneiss complex swirly biotite foliation no orient
- Faults**
 - solid lines where observed, dashed where inferred
- Lithologic contacts**
 - solid lines where observed, dashed where inferred
- Other**
 - Town boundaries
- Hydrography**
 - streams
 - lakes
- Roads by class**
 - 1
 - 2
 - 3
 - 4
 - 5
 - 6
- Other symbols**
 - calc silicate
 - swamp
 - quarry
 - glacial striations



Contour interval 20 feet



Structure symbols without dip values represent trends only.



Cross section A-A'

Tentative correlations of rocks units based on lithologic similarities and preliminary results from trace element and Rare Earth Analyses

