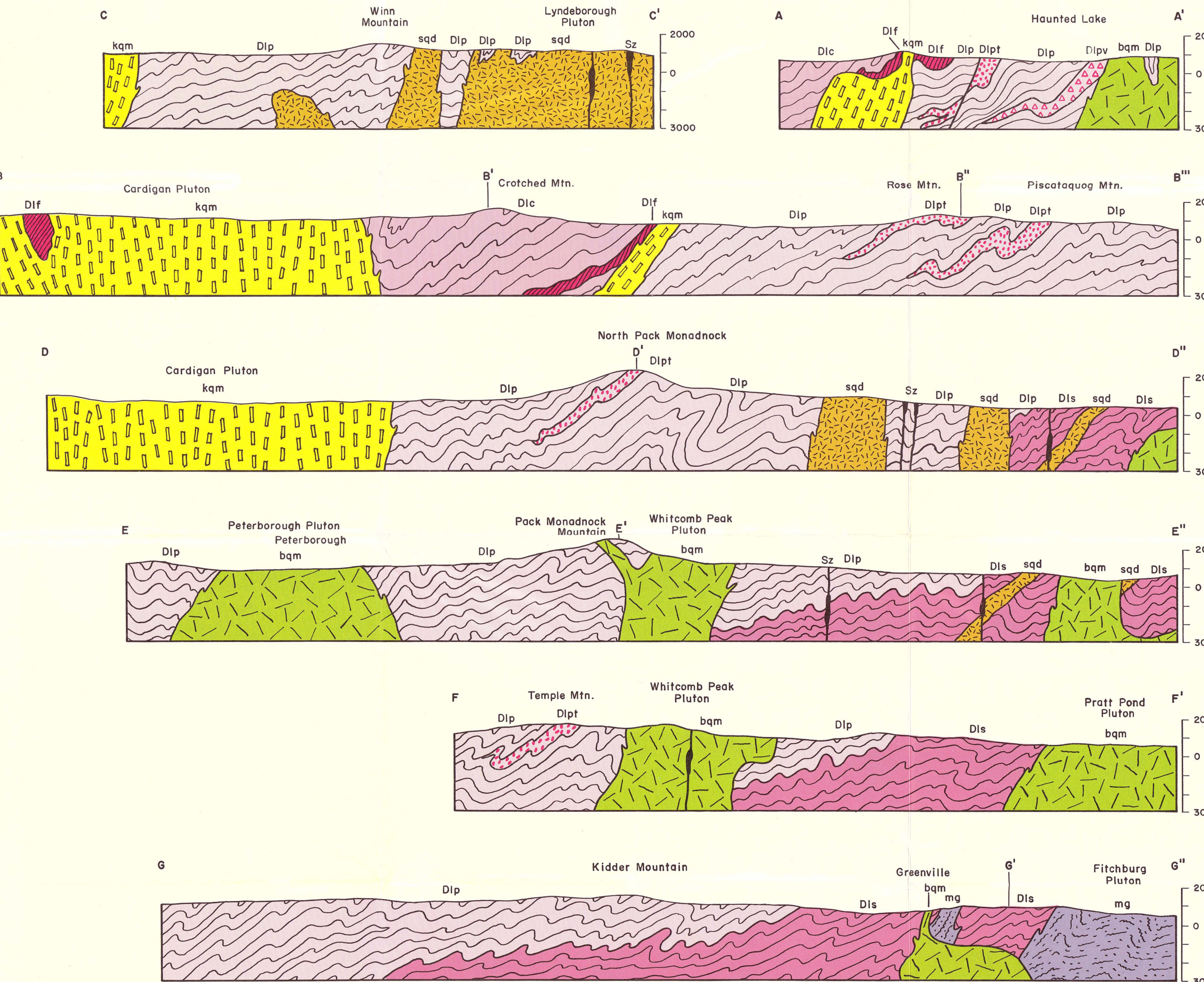


EXPLANATION

- JURASSIC?**
 - TRIASSIC?**
 - MIDDLE DEVONIAN**
 - LOWER DEVONIAN**
 - LITTLETON FORMATION**
- Dip**
Diorite
Dark gray fine-grained to coarse-grained massive to weakly foliated hornblende-biotite diorite
 - / b **
Basalt
Aphanitic to fine-grained dark gray to black basalt
 - bqm**
Binary Quartz Monzonite
Light-colored medium-grained rocks composed chiefly of quartz, plagioclase, microcline and variable but small amounts of biotite and muscovite
 - kqm**
Kinsman Quartz Monzonite
Coarse-grained gray rock with white microcline-phenocrysts one to two inches long that are parallel to one another. Coarse gray groundmass composed of quartz, plagioclase, microcline, biotite and muscovite
 - sqd**
Spaulding Quartz Diorite
Dark gray medium-grained massive to foliated spotted rock composed of plagioclase, quartz and biotite. Locally small bodies of light-colored granodiorite and quartz monzonite are present
 - mg**
Massabesset Gneiss
Chiefly a gray coarse-grained biotite-muscovite gneiss; layers of mica schist, sills of pink granite and pegmatite
 - Dlc**
Crocheted Mountain Member
Chiefly gray medium-grained mica schist, some sulfides. Coarse sillimanite schists are common
 - Dif**
Francestown Member
White to light gray fine- to medium-grained pyrite-quartz-plagioclase granulates that weather rusty. Also white lime-silicate rock
 - Dipv**
Peterborough Member
Chiefly fine-grained to coarse-grained mica schists, many of which are sulfidic gray quartz-feldspar granulates composed of quartz, plagioclase, biotite and muscovite. Occasional thin beds of lime-silicate granulate and biotite granulate. Dip thin bedded mica schist and quartz-mica granulate. Dipv feldspar-quartz granulate of volcanic origin
 - Dls**
Souhegan Member
Gray medium-grained mica schist with thin pods, lenses and stringers composed of quartz and plagioclase. Minor lenses of quartz-feldspar granulate and lime-silicate granulate.

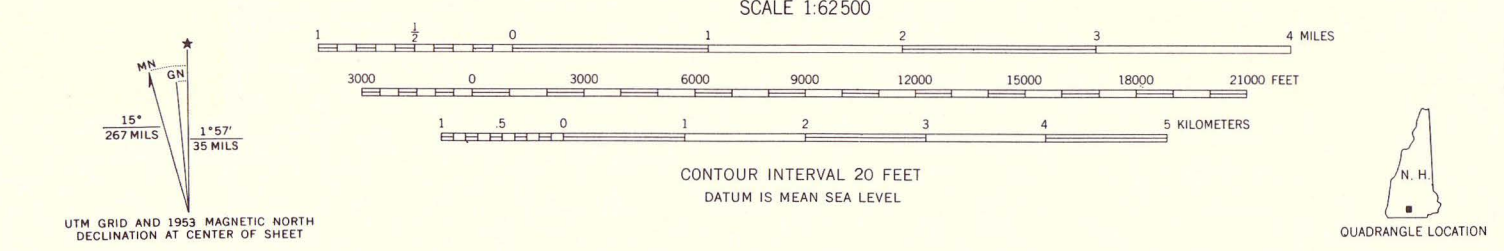
- SYMBOLS**
- Contact approximately located
 - - - Fault inferred
 - Sz Silicified zone and associated, inferred fault
 - 50 Strike and dip of beds
 - Strike of vertical beds
 - Strike and dip of foliation
 - Strike of vertical rotation
 - 35 Strike and dip of foliation with bearing and plunge of lineation
- QUARRIES**
- Active quartz quarry
 - Abandoned granite quarries and Francestown soapstone quarry (S)



GEOLOGIC MAP AND STRUCTURE SECTIONS OF THE PETERBOROUGH QUADRANGLE, NEW HAMPSHIRE

Design and drafting of map by Graphic Arts Section
Department of Resources and Economic Development

Topographic base by U. S. Geological Survey



Geology by Robert C. Greene, 1964
Published 1970
GEO-054-062500-EMAP