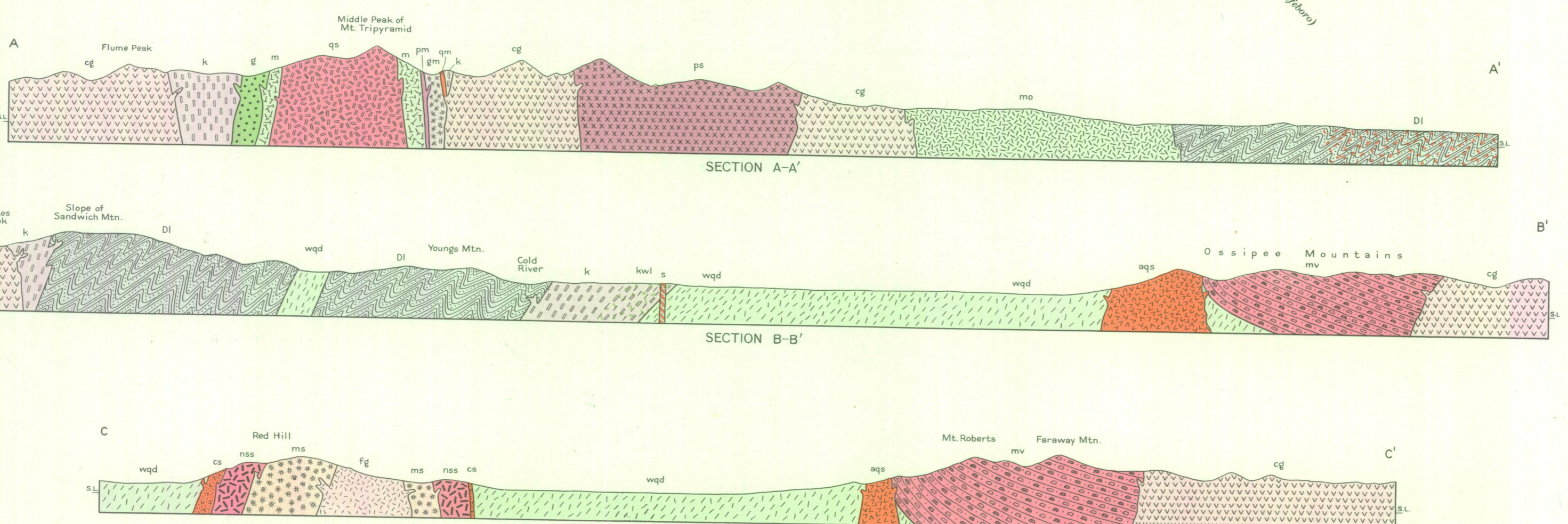


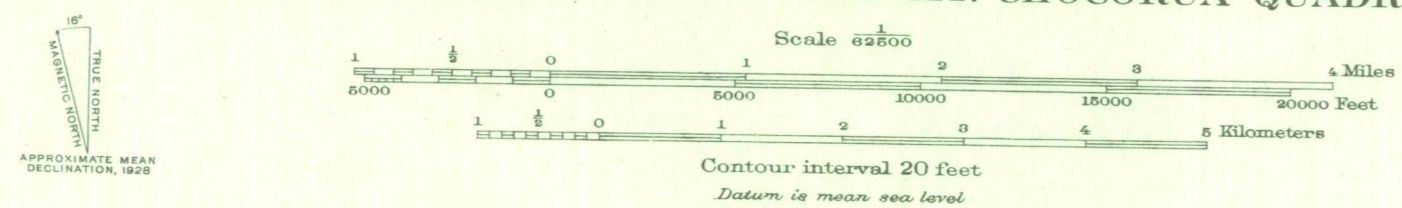
LEGEND
 METAMORPHIC AND IGNEOUS ROCKS

- UNCONFORMITY**
- Binary granite**
 (Medium-grained, white granite, composed of potash feldspar, quartz, oligoclase, biotite, and muscovite.)
- Tamworth granite**
 (Medium-grained, pink granite, composed of potash feldspar, quartz, oligoclase, and biotite, generally altered to chlorite.)
- Norway quartz monzonite**
 (Medium to coarse-grained, pink quartz monzonite, composed of quartz, oligoclase, biotite, and some muscovite.)
- Kinsman quartz monzonite**
 (Medium to coarse-grained, gray quartz monzonite, composed of quartz, oligoclase, biotite, and some muscovite. Locally foliated, only mixed zone of Kinsman quartz monzonite, Winnepeaukee quartz diorite, and schists of Littleton formation.)
- Winnepeaukee quartz diorite**
 (Medium-grained, gray to dark-gray quartz diorite, composed essentially of andesine, quartz, biotite, and in some localities, hornblende. qgm, quartz monzonite phase.)
- Littleton formation**
 (Microschist, quartz-mica schist, and sillimanite schist. Di, areas where the schist is intimately injected by Kinsman quartz monzonite; Di, areas where schist is intimately injected by granites and pegmatites.)
- METAMORPHIC ZONES**
 (All the schists show high-grade metamorphism.)
- CONTACTS**
- Accurate**
- Approximate and diagrammatic due to poor exposures**
- Indefinite as sharp contact is lacking**
- SPECIAL SYMBOLS**
 (Dip and strike symbols representing only a small percentage of the field observations.)
- Strike and dip of bedding, including inverted and normal strata**
- Strike of vertical beds**
- Strike and dip of foliation and schistosity**
- Strike of vertical foliation and schistosity**
- Normal fault**
 (Downthrown block.)
- Simplified zone**
 (Probably along a fault, but there is no proof of this.)
- APS**
 APS, LK, MB, and AWG
 LK



GEOLOGIC MAP AND STRUCTURE SECTIONS OF THE MT. CHOCORUA QUADRANGLE, NEW HAMPSHIRE

Topographic base by U. S. Geological Survey, surveyed in cooperation with the State of New Hampshire.



Geology by Althea Page Smith, Louise Kingsley, Alonzo W. Quinn, and Marland Billings. Assistants: Edith Watson Schipper, Dorothy Corcoran, and Ruth Johnson. Directed by Marland Billings. Geology surveyed in 1929-1936. Published 1938.