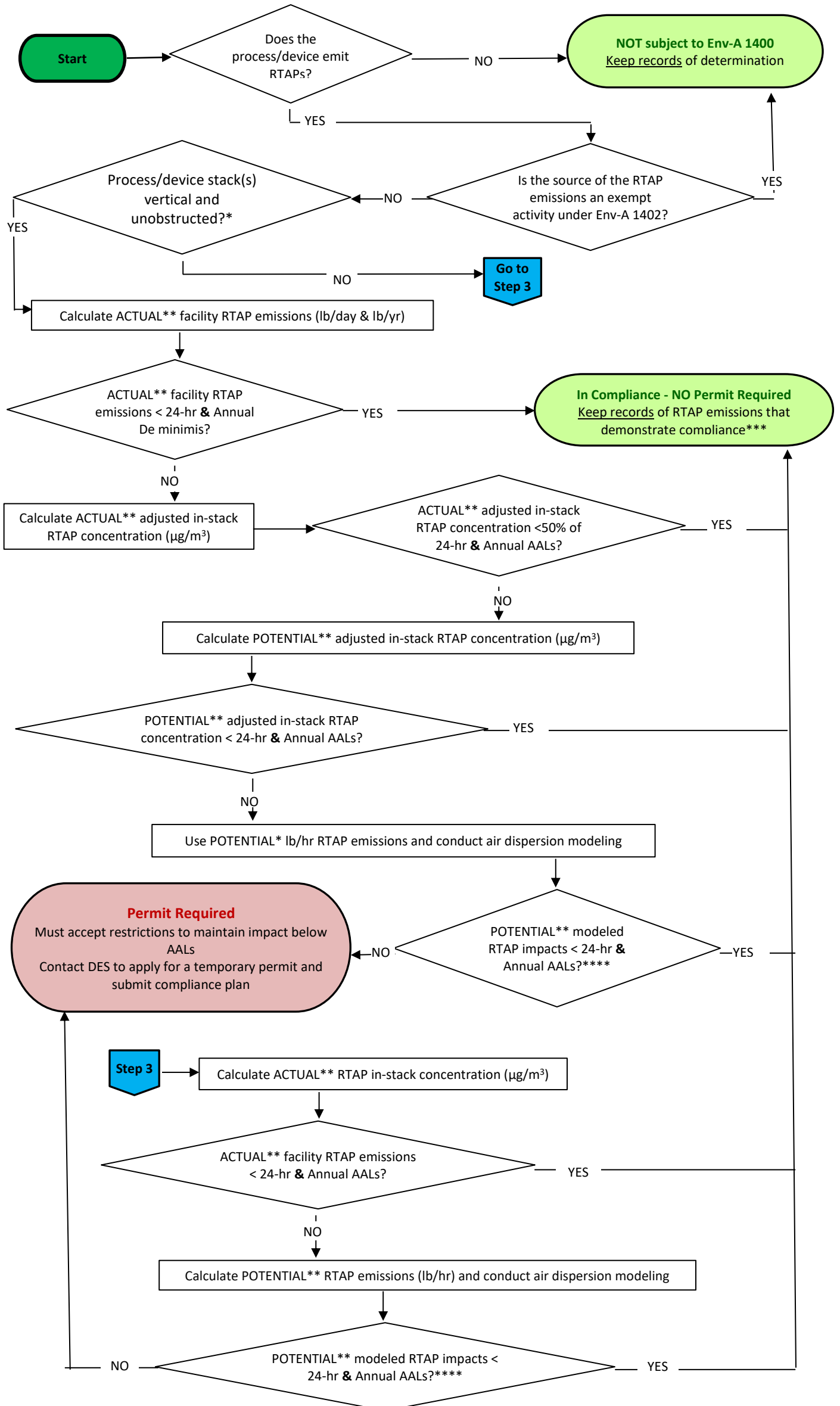


Env-A 1400 Compliance Determination Flow Chart



* "Above the roofline" means the exhaust stack extends at least 2 feet higher than any roofline within 10 feet of the exhaust stack exit, measured horizontally. (Env-A 101.210)

** ACTUAL and/or POTENTIAL emissions are UNCONTROLLED emissions. If the facility has a current permit mandating the use of a control device to achieve emissions reductions, the facility may use the control efficiency to determine compliance with Env-A 1400 as long as the RTAP(s) are controlled to the same degree as other pollutants by the control device.

*** Even when a source can use actual emissions to demonstrate compliance with Env-A 1400, it may still be necessary to calculate potential emissions of other pollutants to determine the applicability of other regulations such as VOC RACT, Title V, Title III, etc.

**** If compliance cannot be demonstrated using this method, the Facility may submit a request for approval of an alternative method as specified in Env-A 1405.06.