



## New Hampshire Clean Diesel Grant Program NH DERA PROJECT PROPOSAL FORM

Air Resources Division/Technical Services Bureau



**New Hampshire's Clean Diesel Program provides rebates to help you upgrade your equipment and vehicles.**

NHDES will have funds available in October 2018 through the Environmental Protection Agency's (EPA) Diesel Emissions Reduction Act (DERA) program and Volkswagen's Environmental Mitigation Trust Agreement for State Beneficiaries to help diesel equipment owners in New Hampshire reduce emissions.

**Timeframe for applications (applications must be postmarked or received electronically by the end date to be considered in the round):**

**Round 1** of funding applications accepted **October 1<sup>st</sup> through October 22<sup>nd</sup>**

**Round 2** as funding allows: applications accepted **October 23<sup>rd</sup> through November 16<sup>th</sup>**

**Round 3** as funding allows: applications accepted **November 17<sup>th</sup> through December 14<sup>th</sup>**

Applications for Rounds 2 & 3 will only be evaluated and scored if funding is still available following the previous round's project selection.

### **Who is eligible?**

Local/State governments and businesses with diesel vehicles and equipment operating primarily in New Hampshire are eligible.

### **What types of projects are eligible for funding?**

**Verified Idle Reduction Technologies** (including highway and locomotive idle reduction technologies; electrified parking spaces; marine shore power connections systems) – between 25% to 40% of project cost.

**Marine, Locomotive, or Non-Road Engine Replacement** 40% of project cost when replacing a diesel engine with a 2017 model year or newer engine certified to EPA standards; 60% of project cost when replacing a diesel engine with an electric motor or electric power source.

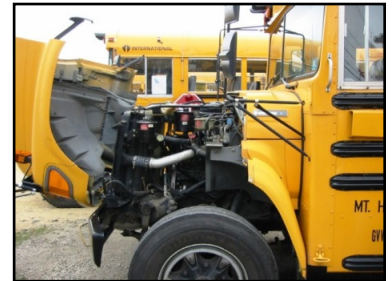
**Highway Diesel Engine Replacement** 40% of project cost when replacing a diesel engine with a 2017 model year or newer engine certified to EPA emissions standards; 50% of project cost when replacing a diesel engine with a CARB Certified Optional Low-NOx Standard engine; 60% of project cost when replacing a diesel engine with an electric motor or electric power source.

**Locomotives and Non-Road Diesel Vehicles and Equipment Replacement** 25% of the cost when new vehicle or equipment is powered by a 2017 model year or newer engine certified to EPA emission standards; 45% of the cost of a new, all-electric vehicle or piece of equipment.

**Highway Diesel Vehicles (other than drayage) and Buses** 25% of the cost when the new vehicle is powered by a 2017 model year or newer engine certified to EPA emissions standards; 35% of the cost when the new vehicle is powered by a CARB Certified Option Low-NOx Standard engine; 45% of the cost for an all-electric replacement vehicle.

**Drayage Vehicles** 50% of the cost when the replacement vehicle is powered by a 2012 model year or newer engine certified to EPA emissions standards.

**Exhaust controls** (oxidation catalysts and particulate matter filters, etc.) if combined with crankcase emission control – 100% of project cost.



### **How do I apply?**

The project proposal form (below) is short and simple. Just let us know about your diesel emission reduction project and we will review it. All eligible applicants and projects will be considered and selection will be based upon certain criteria, including potential emissions reduction, where the vehicles/equipment will operate, impacts to nearby populations, and other factors including secondary benefits (e.g. impacts on water quality and societal benefit). If you have presented a viable project we will contact you for additional information.

### **Things to know:**

- Replacement projects are only eligible for funding if the equipment is being replaced in advance of a normal replacement schedule. Vehicles scheduled for replacement prior to three years from the start date of the project are not eligible. Applicants will be required to document that the project is an early replacement.
- Replaced vehicle and engines must be destroyed.
- Recipients must fund the project and request reimbursement.
- No project costs may be incurred prior to approval of the grant agreement by the Governor and Executive Council.
- Quarterly reports on operating details of the vehicle must be submitted to NHDES for a period of up to three years.
- Grant recipients must comply with EPA DERA program requirements – See: <https://www.epa.gov/sites/production/files/2017-02/documents/fy17-state-program-guide-2017-02.pdf>

For more information contact Elizabeth Strachan at the contact information below.

[Elizabeth.strachan@des.nh.gov](mailto:Elizabeth.strachan@des.nh.gov) or phone (603) 271-8330  
P.O. Box 95, Concord, NH 03302-0095



## New Hampshire Clean Diesel Grant Program NH DERA PROJECT PROPOSAL FORM

Air Resources Division/Technical Services Bureau



**New Hampshire's Clean Diesel Program provides rebates to help you upgrade your equipment and vehicles.** NHDES is soliciting proposals from interested parties for projects to reduce on- and off-road diesel engine emissions. Project applicants submitting preliminary proposals that best meet the DERA program criteria (<https://www.epa.gov/sites/production/files/2018-04/documents/fy17-18-state-program-guide.pdf>) will be contacted and asked to submit additional project details. The following information is required for initial consideration:

<b>Project Applicant (name of business or public entity):</b>		
<b>Contact Name:</b>		<b>Phone:</b>
<b>Address:</b>		
<b>Town:</b>	<b>State/Zip:</b>	<b>Email:</b>
<b>Project Location:</b>		<b>Project Partners (if any):</b>
<b>% of operation in NH (based on hours of operation or miles traveled):</b>		<b>Is applicant a Government Entity or is use of equipment under a contract with a Government Agency?</b>
<p><b>Please provide a brief narrative describing how and where the existing vehicle or engine is used, including travel location (e.g., operates within the City of Manchester) or routes (e.g., daily trips from Portsmouth to Boston). Please indicate any sensitive receptors (schools, hospitals, nursing homes, other (please describe)) that are impacted by the operation of the current vehicle:</b></p>		

<b>Project Type (check all that apply):</b>	<b>Estimated cost, including installation if applicable:</b>
<b>Vehicle/Equipment Replacement</b>	
<b>Repower/Upgrade (engine replacement)</b>	
<b>Idle Reduction Project</b>	
<b>Exhaust Controls</b>	

Please provide specific information about your project in the applicable section below.

<b>On-Road Vehicle Information</b> (this section is only for on-road vehicles, please skip if you have a different type of project)	
<b>Number of Vehicles</b>	
<b>Proposed Replacement Engine Year (if applicable)</b>	
<b>Type of Vehicle (plow, firetruck, short haul, long haul, single unit, combination, etc.)</b>	
<b>Vehicle Weight Class</b>	
<b>Make/Model of Vehicle</b>	
<b>Model Year of Vehicle</b>	
<b>Make/Model of Engine</b>	
<b>Model Year of Engine</b>	
<b>Average miles traveled per year</b>	
<b>Gallons of fuel used per year and fuel type</b>	
<b>Idling Hours per year</b>	
<b>Hoteling Hours per year (long haul trucks only)</b>	
<b>Proposed Fuel Type of new Engine/Vehicle</b>	

<b>Off-road (Vehicle/Equipment) Information</b> (this section is only for off-road vehicles or equipment, please skip if you have a different type of project)	
<b>Number of Vehicles/Equipment</b>	
<b>Proposed Replacement Engine Year (if applicable)</b>	
<b>Vehicle/Equipment Type (backhoe, wheeled loader, generator, etc.)</b>	
<b>Make/Model of Vehicle/Equipment</b>	
<b>Model Year of Vehicle/Equipment</b>	
<b>Make/Model of Engine</b>	
<b>Model Year of Engine</b>	
<b>Engine Emissions Certification Level (Tier Level)</b>	
<b>Horsepower</b>	
<b>Average operating hours per year</b>	
<b>Gallons of Fuel used per year and Fuel Type</b>	
<b>Proposed Fuel Type of new Engine/Vehicle</b>	

<b>Locomotive Information</b> (this section is only for locomotives, please skip if you have a different type of project)	
<b>Number of Engines</b>	
<b>Proposed Replacement Engine Year (if applicable)</b>	
<b>Type (line haul, passenger, switch, etc.)</b>	
<b>If line haul, please indicate duty cycle (line haul or switch)</b>	
<b>Make /Model of Locomotive</b>	
<b>Model Year of Locomotive</b>	
<b>Make/Model of Engine</b>	
<b>Model Year of Engine</b>	
<b>Engine Emissions Certification Level (Tier Level)</b>	
<b>Engine Horsepower</b>	
<b>Average Operating Hours per year</b>	
<b>Gallons of Fuel used per year and Fuel Type</b>	
<b>Proposed Fuel Type for new Engine</b>	

<b>Marine Vessels Information</b> (this section is only for marine vessels, please skip if you have a different type of project)	
<b>Number of Engines</b>	
<b>Proposed Replacement Engine Year (if applicable)</b>	
<b>Vessel Type (Fishing Boat, Ferry, Tour Boat, etc.)</b>	
<b>Auxiliary or Propulsion?</b>	
<b>Make/Model of Vessel</b>	
<b>Model Year of Vessel</b>	
<b>Make/Model of Engine</b>	
<b>Model Year of Engine</b>	
<b>Engine Emissions Certification Level (Tier Level)</b>	
<b>Engine Horsepower and Cylinder Displacement</b>	
<b>Average Operating Hours per year</b>	
<b>Gallons of Fuel used per year and Fuel Type</b>	
<b>Proposed Fuel Type for new Engine</b>	

**Please provide the date this vehicle/engine is scheduled to be replaced if DERA funding were not available. Applicants that are selected for funding will be asked to provide verification of the original replacement schedule, such as a business plan or capital improvement plan.**


**Please indicate any additional benefits this project will have on the community or environment.**


**Will your project positively impact an economically disadvantaged community or population? If so, please explain how.**
