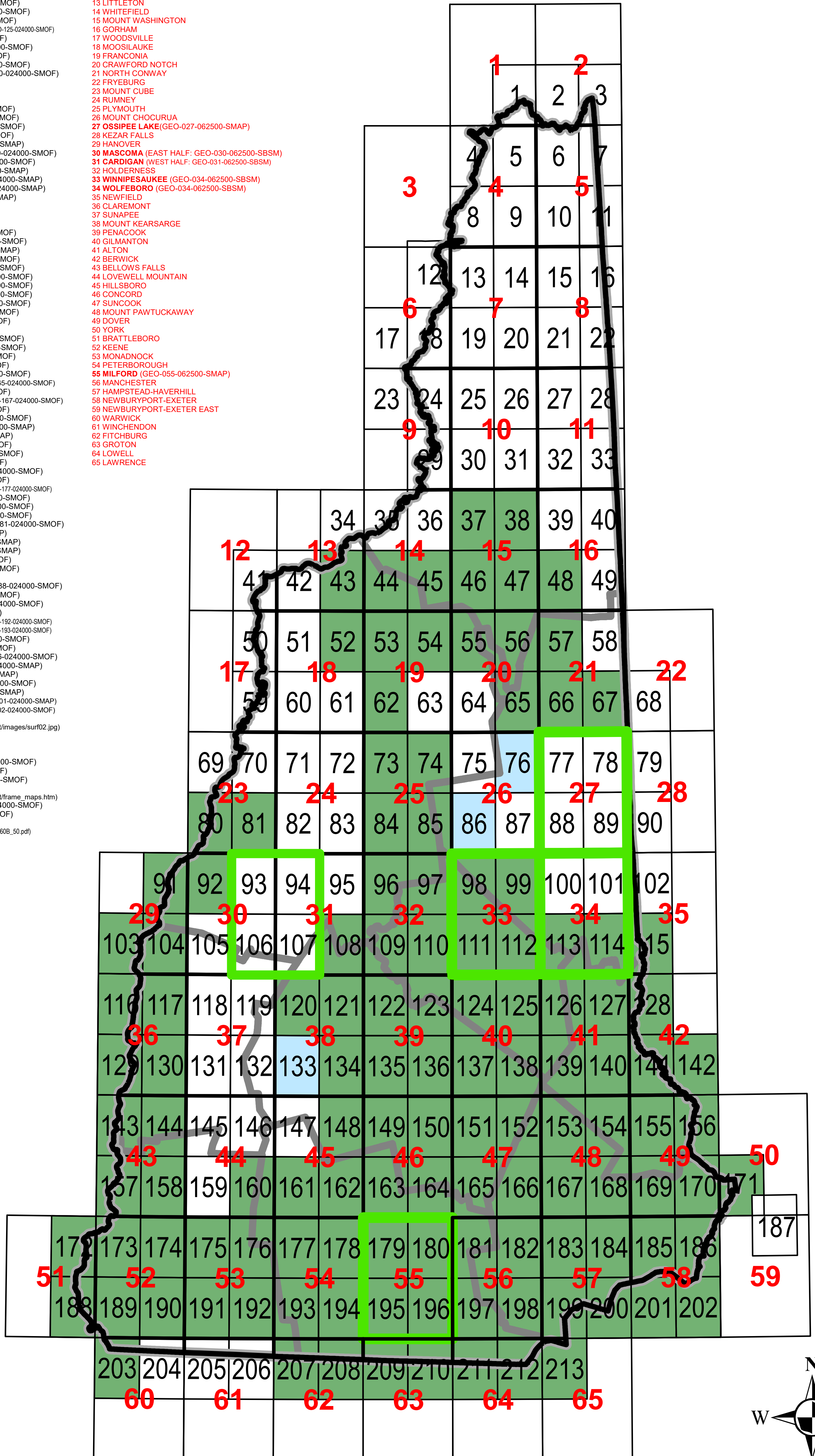


NEW HAMPSHIRE SURFICIAL GEOLOGIC MAP INDEX

- 7.5' Quadrangles**
- 1 GREELEY BROOK
 - 2 PROSPECT HILL
 - 3 MOOSE BOG
 - 4 METALLAK MOUNTAIN
 - 5 COWEN HILL
 - 6 SECOND CONNECTICUT LAKE
 - 7 RUMP MOUNTAIN
 - 8 PITTSBURG
 - 9 LAKE FRANCIS
 - 10 MAGALLOWAY MOUNTAIN
 - 11 BOSEBUCK MOUNTAIN
 - 12 MONADNOCK MOUNTAIN
 - 13 LOVERING MOUNTAIN
 - 14 DIAMOND POND
 - 15 MOUNT PISGAH
 - 16 WILSONS HILLS
 - 17 BLOOMFIELD
 - 18 TINKERVILLE
 - 19 BLUE MOUNTAIN
 - 20 DIXVILLE NOTCH
 - 21 ERROL
 - 22 UMBAGOG LAKE NORTH
 - 23 MAIDSTONE LAKE
 - 24 STRATFORD
 - 25 PERCY PEAKS
 - 26 DUMMER PONDS
 - 27 TEAKETTLE RIDGE
 - 28 UMBAGOG LAKE SOUTH
 - 29 GROVETON
 - 30 STARK
 - 31 WEST MILAN
 - 32 SUCCESS POND
 - 33 MILES POND
 - 34 LANCASTER W
 - 35 LANCASTER E
 - 36 MT JEFFERSON / PLINY W (GEO-037-02400-SMOF)
 - 37 MT CRESCENT / PLINY E (GEO-038-02400-SMOF)
 - 38 BERLIN
 - 39 SHELBURNE
 - 40 BARNET E
 - 41 BARNET W
 - 42 LOWER WATERFORD
 - 43 LITTLETON (GEO-043-02400-SMOF)
 - 44 BETHLEHEM W (GEO-044-02400-SMOF)
 - 45 BETHLEHEM E (GEO-045-02400-SMOF)
 - 46 MOUNT DARTMOUTH (GEO-046-02400-SMOF)
 - 47 MOUNT WASHINGTON (GEO-047-02400-SMOF)
 - 48 CARTER DOME (GEO-048-02400-SMOF)
 - 49 WILD RIVER
 - 50 WOODSVILLE
 - 51 LISBON
 - 52 SUGAR HILL (GEO-052-02400-SMOF)
 - 53 FRANCONIA (GEO-053-02400-SMOF)
 - 54 SOUTH TWIN MTN (GEO-054-02400-SMOF)
 - 55 CRAWFORD NOTCH (GEO-055-02400-SMOF)
 - 56 STAIRS MOUNTAIN (GEO-056-02400-SMOF)
 - 57 JACKSON (GEO-057-02400-SMOF)
 - 58 CHATHAM
 - 59 NEWBURY
 - 60 EAST HAVERHILL
 - 61 MT. MOOSILAUKE
 - 62 LINCOLN (GEO-062-02400-SMOF)
 - 63 MOUNT OSCOLA
 - 64 MOUNT CARRIGAIN
 - 65 BARTLETT
 - 66 NORTH CONWAY W (GEO-066-02400-SMOF)
 - 67 NORTH CONWAY E (GEO-067-02400-SMOF)
 - 68 FRYEBURG
 - 69 FAIRLEE
 - 70 PIERMONT
 - 71 WARREN
 - 72 MOUNT KINEO
 - 73 WOODSTOCK (GEO-073-02400-SMOF)
 - 74 WATERVILLE VALLEY (GEO-074-02400-SMOF)
 - 75 MOUNT TRIPYRAMID
 - 76 MOUNT CHOCURUA
 - 77 SILVER LAKE
 - 78 CONWAY
 - 79 BROWNFIELD
 - 80 LYME (GEO-080-02400-SMOF)
 - 81 SMARTS MOUNTAIN (GEO-081-02400-SMOF)
 - 82 WENTWORTH
 - 83 RUMNEY
 - 84 PLYMOUTH (GEO-084-02400-SMOF)
 - 85 SQUAM MOUNTAINS (GEO-085-02400-SMOF)
 - 86 CENTER SANDWICH
 - 87 TOWNFORTH
 - 88 OSSIPPEE LAKE
 - 89 FREEDOM
 - 90 KEZAR FALLS
 - 91 HANOVER (GEO-091-02400-SMOF)
 - 92 ENFIELD (GEO-092-02400-SMOF)
 - 93 CANAAN
 - 94 MT. CARDIGAN
 - 95 NEWFUND LAKE
 - 96 ASHLAND (GEO-096-02400-SMOF)
 - 97 HOLDERNESS (GEO-096-02400-SMOF)
 - 98 CENTER HARBOR (GEO-097-02400-SMOF)
 - 99 MELVIN VILLAGE (GEO-098-02400-SMOF)
 - 100 TUFTONBORO
 - 101 OSSIPPEE
 - 102 WEST NEWFIELD
 - 103 HARTLAND (GEO-103-02400-SMOF)
 - 104 NORTH HARTLAND (GEO-104-02400-SMOF)
 - 105 NORTH GRANTHAM
 - 106 ENFIELD CENTER
 - 107 GRAFTON
 - 108 DANBURY (GEO-108-02400-SMOF)

- 109 BRISTOL (GEO-109-02400-SMOF)
- 110 WINNISQUAM LAKE (GEO-110-02400-SMOF)
- 111 LACONIA (GEO-111-02400-SMOF)
- 112 WEST ALTON (GEO-112-02400-SMOF)
- 113 WOLFEBORO (GEO-113-02400-SMAP)
- 114 SANBORNVILLE (GEO-114-02400-SMOF)
- 115 GREAT EAST LAKE (GEO-115-02400-SMOF)
- 116 WINDSOR (GEO-116-02400-SMOF)
- 117 CLAREMONT NORTH (GEO-117-02400-SMOF)
- 118 GRANTHAM
- 119 SUNAPEE LAKE NORTH
- 120 NEW LONDON
- 121 ANDOVER (GEO-121-02400-SMOF)
- 122 FRANKLIN (GEO-122-02400-SMOF)
- 123 NORTHFIELD (GEO-123-02400-SMOF)
- 124 BELMONT (GEO-124-02400-SMOF)
- 125 GILMANTON IRONWORKS (GEO-125-02400-SMOF)
- 126 ALTON (GEO-126-02400-SMOF)
- 127 FARMINGTON (GEO-127-02400-SMOF)
- 128 MILTON (GEO-128-02400-SMOF)
- 129 SPRINGFIELD (GEO-129-02400-SMOF)
- 130 CLAREMONT SOUTH (GEO-130-02400-SMOF)
- 131 NEWPORT
- 132 SUNAPEE LAKE SOUTH
- 133 BRADFORD
- 134 WARNER (GEO-134-02400-SMOF)
- 135 WEBSTER (GEO-135-02400-SMOF)
- 136 PENACOOK (GEO-136-02400-SMOF)
- 137 LOUDON (GEO-137-02400-SMOF)
- 138 PITTSFIELD (GEO-138-02400-SMAP)
- 139 PARKER MOUNTAIN (GEO-139-02400-SMOF)
- 140 BAXTER LAKE (GEO-140-02400-SMOF)
- 141 ROCHESTER (GEO-141-02400-SMAP)
- 142 SOMERSWORTH (GEO-142-02400-SMAP)
- 143 BELLOW FALLS (GEO-143-02400-SMAP)
- 144 ALSTEAD (GEO-144-02400-SMAP)
- 145 EAST LEMPSTER
- 146 WASHINGTON
- 147 HILLSBORO UPPER VILLAGE
- 148 HENNIKER (GEO-148-02400-SMOF)
- 149 HOPKIN (GEO-149-02400-SMOF)
- 150 CONCORD (GEO-150-02400-SMAP)
- 151 SUNCOOK (GEO-151-02400-SMOF)
- 152 GOSSVILLE (GEO-152-02400-SMOF)
- 153 NORTHWOOD (GEO-153-02400-SMOF)
- 154 BARRINGTON (GEO-154-02400-SMOF)
- 155 DOVER WEST (GEO-155-02400-SMOF)
- 156 DOVER EAST (GEO-156-02400-SMOF)
- 157 WALPOLE (GEO-157-02400-SMOF)
- 158 GILSUM (GEO-158-02400-SMOF)
- 159 MARLOW
- 160 STODDARD (GEO-160-02400-SMOF)
- 161 HILLSBORO (GEO-161-02400-SMOF)
- 162 DEERING (GEO-162-02400-SMOF)
- 163 WEARE (GEO-163-02400-SMOF)
- 164 GOFFSTOWN (GEO-164-02400-SMOF)
- 165 MANCHESTER NORTH (GEO-165-02400-SMOF)
- 166 CANDIA (GEO-166-02400-SMOF)
- 167 MOUNT PAWTUCKAWAY (GEO-167-02400-SMOF)
- 168 EPPING (GEO-168-02400-SMOF)
- 169 NEWMARKET (GEO-169-02400-SMOF)
- 170 PORTSMOUTH (GEO-170-02400-SMAP)
- 171 KITTERY (GEO-171-02400-SMAP)
- 172 PUTNEY (GEO-172-02400-SMOF)
- 173 SPOFFORD (GEO-173-02400-SMOF)
- 174 KEENE (GEO-174-02400-SMOF)
- 175 MARLBOROUGH (GEO-175-02400-SMOF)
- 176 DUBLIN (GEO-176-02400-SMOF)
- 177 PETERBOROUGH NORTH (GEO-177-02400-SMOF)
- 178 GREENFIELD (GEO-178-02400-SMOF)
- 179 NEW BOSTON (GEO-179-02400-SMOF)
- 180 PINARDVILLE (GEO-180-02400-SMOF)
- 181 MANCHESTER SOUTH (GEO-181-02400-SMOF)
- 182 DERRY (GEO-182-02400-SMAP)
- 183 SANDOWN (GEO-183-02400-SMAP)
- 184 KINGSTON (GEO-184-02400-SMAP)
- 185 EXETER (GEO-185-02400-SMOF)
- 186 HAMPTON (GEO-186-02400-SMOF)
- 187 ISLES OF SHOALS
- 188 BRATTLEBORO EAST (GEO-188-02400-SMOF)
- 189 HINSDALE (GEO-189-02400-SMOF)
- 190 WEST SWANZEY (GEO-190-02400-SMOF)
- 191 TROY (GEO-191-02400-SMOF)
- 192 MONADNOCK MOUNTAIN (GEO-192-02400-SMOF)
- 193 PETERBOROUGH SOUTH (GEO-193-02400-SMOF)
- 194 GREENVILLE (GEO-194-02400-SMOF)
- 195 MILFORD (GEO-195-02400-SMOF)
- 196 SOUTH MERRIMACK (GEO-196-02400-SMAP)
- 197 NASHUA NORTH (GEO-197-02400-SMAP)
- 198 WINDHAM (GEO-198-02400-SMAP)
- 199 SALEM DEPOT (GEO-199-02400-SMOF)
- 200 HAVERHILL (GEO-200-02400-SMAP)
- 201 NEWBURYPORT WEST (GEO-201-02400-SMAP)
- 202 NEWBURYPORT EAST (GEO-202-02400-SMOF)
- 203 NORTHFIELD
- 204 MT. GRACE
- 205 ROYALSTON
- 206 WINCHENDON
- 207 ASHBURNHAM (GEO-207-02400-SMOF)
- 208 ASHBY (GEO-208-02400-SMOF)
- 209 TOWNSEND (GEO-209-02400-SMOF)
- 210 PEPPERELL
- 211 NASHUA SOUTH (GEO-211-02400-SMOF)
- 212 LOWELL (GEO-212-02400-SMOF)
- 213 LAWRENCE

- 15' Quadrangles**
- 1 MOOSE BOG WEST
 - 2 MOOSE BOG
 - 3 INDIAN STREAM WEST
 - 4 INDIAN STREAM
 - 5 SECOND CONNECTICUT LAKE
 - 6 AVERILL
 - 7 DIXVILLE
 - 8 ERROL
 - 9 GUILDHALL
 - 10 PERCY
 - 11 MILAN
 - 12 SAINT JOHNSBURY
 - 13 LITTLETON
 - 14 WHITEFIELD
 - 15 MOUNT WASHINGTON
 - 16 GORHAM
 - 17 WOODSVILLE
 - 18 MOOSILAUKE
 - 19 FRANCONIA
 - 20 CRAWFORD NOTCH
 - 21 NORTH CONWAY
 - 22 FRYEBURG
 - 23 MOUNT CUBE
 - 24 RUMNEY
 - 25 PLYMOUTH
 - 26 MOUNT CHOCURUA
 - 27 OSSIPPEE LAKE (GEO-027-062500-SMAP)
 - 28 KEZAR FALLS
 - 29 HANOVER
 - 30 MASCOMA (EAST HALF: GEO-030-062500-SBSM)
 - 31 CARDIGAN (WEST HALF: GEO-031-062500-SBSM)
 - 32 HOLDERNESS
 - 33 WINNIPESAUKEE (GEO-034-062500-SBSM)
 - 34 WOLFEBORO (GEO-034-062500-SBSM)
 - 35 NEWFIELD
 - 36 CLAREMONT
 - 37 SUNAPEE
 - 38 MOUNT KEARSARGE
 - 39 PENACOOK
 - 40 GILMANTON
 - 41 ALTON
 - 42 BERWICK
 - 43 BELLOW FALLS
 - 44 LOVEVELL MOUNTAIN
 - 45 HILLSBORO
 - 46 CONCORD
 - 47 SUNCOOK
 - 48 MOUNT PAWTUCKAWAY
 - 49 DOVER
 - 50 YORK
 - 51 BRATTLEBORO
 - 52 KEENE
 - 53 MONADNOCK
 - 54 PETERBOROUGH
 - 55 MILFORD (GEO-055-062500-SMAP)
 - 56 MANCHESTER
 - 57 HAMPSTEAD-HAVERHILL
 - 58 NEWBURYPORT-EXETER
 - 59 NEWBURYPORT-EXETER EAST
 - 60 WARWICK
 - 61 WINCHENDON
 - 62 FITCHBURG
 - 63 GROTON
 - 64 LOWELL
 - 65 LAWRENCE



15' Map Status

- No Map Available
- Complete

7.5' Mapping Status

- No Map Available
- Complete
- Current