

NEW HAMPSHIRE BEDROCK GEOLOGIC MAP INDEX

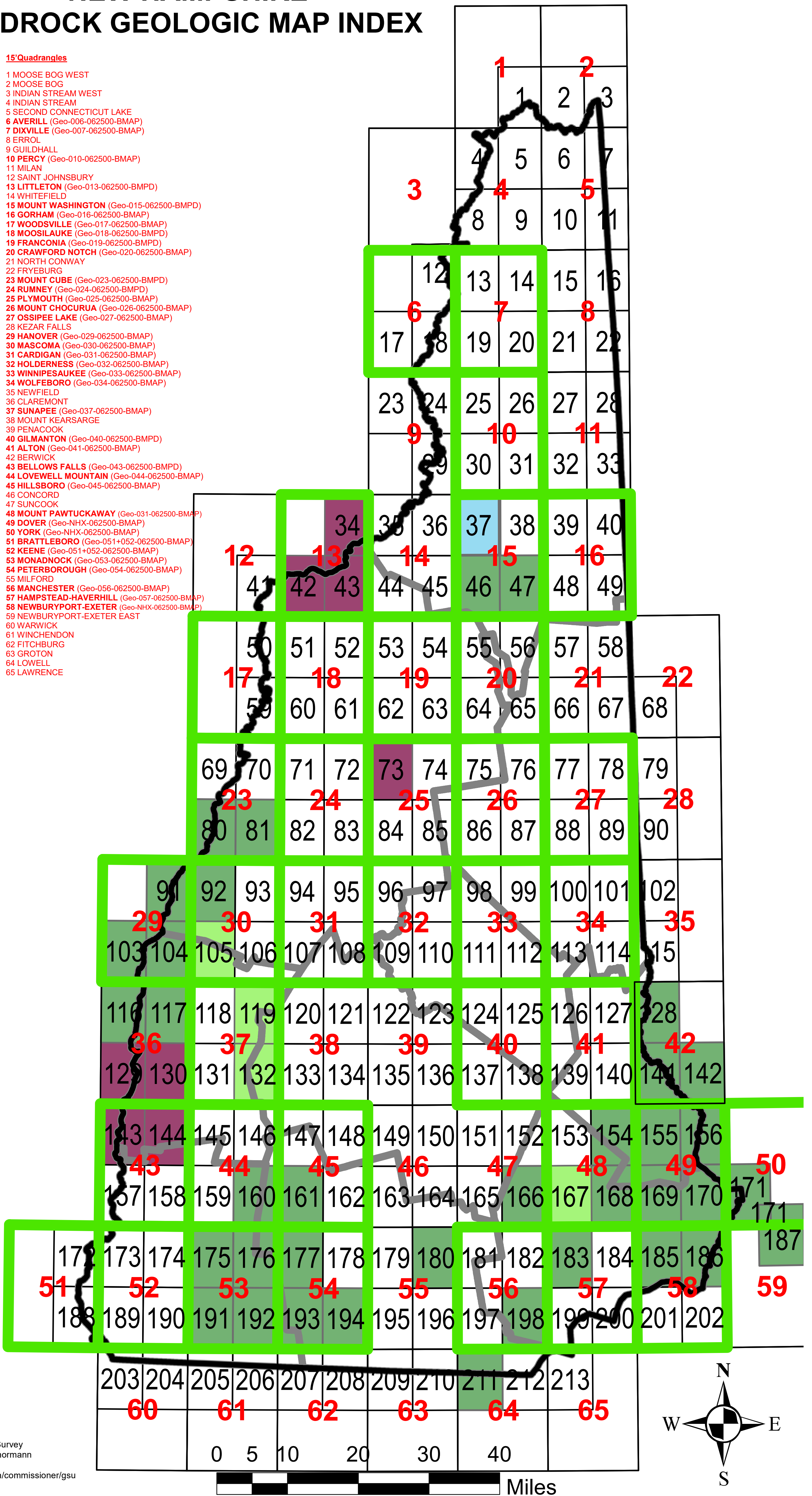
7.5' Quadrangles

- 1 GREELEY BROOK
- 2 PROSPECT HILL
- 3 MOOSE BOG
- 4 METALLAK MOUNTAIN
- 5 COWEN HILL
- 6 SECOND CONNECTICUT LAKE
- 7 RUMP MOUNTAIN
- 8 PITTSBURG
- 9 LAKE FRANCIS
- 10 MAGALLOWAY MOUNTAIN
- 11 BOSEBUCK MOUNTAIN
- 12 MONADNOCK MOUNTAIN
- 13 LOVERING MOUNTAIN
- 14 DIAMOND POND
- 15 MOUNT PISGAH
- 16 WILSONS MILLS
- 17 BLOOMFIELD
- 18 TINKERVILLE
- 19 BLUE MOUNTAIN
- 20 DIXVILLE NOTCH
- 21 ERROL
- 22 UMBAGOG LAKE NORTH
- 23 MAIDSTONE LAKE
- 24 STRATFORD
- 25 PERCY PEAKS
- 26 DUMMER PONDS
- 27 TEAKETTLE RIDGE
- 28 UMBAGOG LAKE SOUTH
- 29 GROVETON
- 30 STARK
- 31 WEST MILAN
- 32 MILAN
- 33 SUCCESS POND
- 34 MILES POND
- 35 LANCASTER W
- 36 LANCASTER E
- 37 JEFFERSON/PLINY W (Geo-037-02400-BMOF)
- 38 PLINY RANGE E
- 39 BERLIN
- 40 SHELBURNE
- 41 BARNET E
- 42 LOWER WATERFORD
- 43 LITTLETON
- 44 BETHLEHEM W
- 45 BETHLEHEM E
- 46 MOUNT DARTMOUTH (Geo-046-024000-BMOF)
- 47 MOUNT WASHINGTON (Geo-047-024000-BMOF)
- 48 CARTER DOME
- 49 WILD RIVER
- 50 WOODSVILLE
- 51 LISBON
- 52 SUGAR HILL
- 53 FRANCONIA
- 54 SOUTH TWIN MTN.
- 55 CRAWFORD NOTCH
- 56 STAIRS MOUNTAIN
- 57 JACKSON
- 58 CHATHAM
- 59 NEWBURY
- 60 EAST HAVERHILL
- 61 MT. MOOSILAUKE
- 62 LINCOLN
- 63 MOUNT OSCEOLA
- 64 MOUNT CARRIGAIN
- 65 BARTLETT
- 66 NORTH CONWAY WEST
- 67 NORTH CONWAY EAST
- 68 FRYEBURG
- 69 FAIRLEE
- 70 PIERMONT
- 71 WARREN
- 72 MOUNT KINEO
- 73 WOODSTOCK
- 74 WATERVILLE VALLEY
- 75 MOUNT TRIPYRAMID
- 76 MOUNT CHOCURUA
- 77 SILVER LAKE
- 78 CONWAY
- 79 BROWNFIELD
- 80 LYME (Geo-080-024000-BMOF)
- 81 SMARTS MOUNTAIN (Geo-081-024000-BMOF)
- 82 WENTWORTH
- 83 RUMNEY
- 84 PLYMOUTH
- 85 SQUAM MOUNTAINS
- 86 CENTER SANDWICH
- 87 TAMWORTH
- 88 OSSISPEE LAKE
- 89 FREEDOM
- 90 KEZAR FALLS
- 91 HANOVER (Geo-091-024000-BMOF)
- 92 ENFIELD (Geo-092-024000-BMOF)
- 93 CANAAN
- 94 MT. CARDIGAN
- 95 NEWFOUND LAKE
- 96 ASHLAND
- 97 HOLDERNESS
- 98 CENTER HARBOR
- 99 MELVIN VILLAGE
- 100 TUFTONBORO
- 101 OSSISPEE
- 102 WEST NEWFIELD
- 103 HARTLAND
- 104 NORTH HARTLAND
- 105 NORTH GRANTHAM (Geo-105-024000-BMOF)
- 106 ENFIELD CENTER

- 107 GRAFTON
- 108 DANBURY
- 109 BRISTOL
- 110 WINNISQUAM LAKE
- 111 LACONIA
- 112 WEST ALTON
- 113 WOLFEBORO
- 114 SANBORNVILLE
- 115 GREAT EAST LAKE
- 116 WINDSOR (Geo-116-024000-BMOF)
- 117 CLAREMONT NORTH
- 118 GRANTHAM
- 119 SUNAPEE LAKE NORTH (Geo-119-024000-BBDL)
- 120 NEW LONDON
- 121 ANDOVER
- 122 FRANKLIN
- 123 NORTHFIELD
- 124 BELMONT
- 125 GILMANTON IRONWORKS
- 126 ALTON
- 127 FARMINGTON
- 128 MILTON (Geo-NHX-100000-BMAP)
- 129 SPRINGFIELD
- 130 CLAREMONT SOUTH
- 131 NEWPORT
- 132 SUNAPEE LAKE SOUTH (Geo-132-024000-BBDL)
- 133 BRADFORD
- 134 WARNER
- 135 WEBSTER
- 136 PENACOOK
- 137 LOUDON
- 138 PITTSFIELD
- 139 PARKER MOUNTAIN
- 140 BAXTER LAKE
- 141 ROCHESTER (Geo-NHX-100000-BMAP)
- 142 SOMERSWORTH (Geo-NHX-100000-BMAP)
- 143 BELLOWS FALLS
- 144 ALSTEAD
- 145 EAST LEMPSTER
- 146 WASHINGTON
- 147 HILLSBORO UPPER VILLAGE
- 148 HENNIKER
- 149 HOPKINTON
- 150 CONCORD
- 151 SUNCOOK
- 152 GOSSVILLE
- 153 NORTHWOOD (Geo-153-048000-BMOF)
- 154 BARRINGTON (Geo-154-048000-BMOF)
- 155 DOVER WEST (Geo-NHX-100000-BMAP)
- 156 DOVER EAST (Geo-NHX-100000-BMAP)
- 157 WALPOLE
- 158 GILSUM
- 159 MARLOW
- 160 STODDARD (Geo-160-024000-BMOF)
- 161 HILLSBORO (Geo-161-024000-BMOF)
- 162 DEERING
- 163 WEARE
- 164 GOFFSTOWN
- 165 MANCHESTER NORTH
- 166 CANDIA (Geo-166-048000-BMOF)
- 167 MOUNT PAWTUCKAWAY
- 168 EPPING (Geo-168-024000-BMOF)
- 169 NEWMARKET
- 170 PORTSMOUTH (Geo-NHX-100000-BMAP)
- 171 KITTERY (Geo-171-024000-BMOF)
- 172 PUTNEY
- 173 SPOFFORD
- 174 KEENE
- 175 MARLBOROUGH (Geo-175-024000-BMOF)
- 176 DUBLIN (Geo-176-024000-BMOF)
- 177 PETERBOROUGH NORTH (Geo-177-024000-BMOF)
- 178 GREENFIELD
- 179 NEW BOSTON
- 180 PINARDVILLE (Geo-180-024000-BMOF)
- 181 MANCHESTER SOUTH
- 182 DERRY
- 183 SANDOWN (Geo-183-048000-BMOF)
- 184 KINGSTON
- 185 EXETER (Geo-185+186-024000-BMOF)
- 186 HAMPTON (Geo-185+186-024000-BMOF)
- 187 ISLES OF SHOALS ?
- 188 BRATTLEBORO EAST
- 189 HINSDALE
- 190 WEST SWANZEY
- 191 TROY (Geo-191-024000-BMOF)
- 192 MONADNOCK MOUNTAIN (Geo-192-024000-BMOF)
- 193 PETERBOROUGH SOUTH (Geo-193-024000-BMOF)
- 194 GREENVILLE (Geo-194-024000-BMOF)
- 195 MILFORD
- 196 SOUTH MERRIMACK
- 197 NASHUA NORTH
- 198 WINDHAM (Geo-198-024000-BMOF)
- 199 SALEM DEPOT
- 200 HAVERHILL
- 201 NEWBURYPORT WEST
- 202 NEWBURYPORT EAST
- 203 NORTHFIELD MA
- 204 MT. GRACE
- 205 ROYALSTON
- 206 WINCHENDON
- 207 ASHBURNHAM
- 208 ASHBY
- 209 TOWNSEND
- 210 PEPPERELL
- 211 NASHUA SOUTH (USGS SIM-3200)
- 212 LOWELL
- 213 LAWRENCE

15' Quadrangles

- 1 MOOSE BOG WEST
- 2 MOOSE BOG
- 3 INDIAN STREAM WEST
- 4 INDIAN STREAM
- 5 SECOND CONNECTICUT LAKE
- 6 AVERILL (Geo-006-062500-BMAP)
- 7 DIXVILLE (Geo-007-062500-BMAP)
- 8 ERROL
- 9 GUILDHALL
- 10 PERCY (Geo-010-062500-BMAP)
- 11 MILAN
- 12 SAINT JOHNSBURY
- 13 LITTLETON (Geo-013-062500-BMPD)
- 14 WHITEFIELD
- 15 MOUNT WASHINGTON (Geo-015-062500-BMPD)
- 16 GORHAM (Geo-016-062500-BMAP)
- 17 WOODSVILLE (Geo-017-062500-BMAP)
- 18 MOOSILAUKE (Geo-018-062500-BMPD)
- 19 FRANCONIA (Geo-019-062500-BMPD)
- 20 CRAWFORD NOTCH (Geo-020-062500-BMAP)
- 21 NORTH CONWAY
- 22 FRYEBURG
- 23 MOUNT CUBE (Geo-023-062500-BMPD)
- 24 RUMNEY (Geo-024-062500-BMPD)
- 25 PLYMOUTH (Geo-025-062500-BMAP)
- 26 MOUNT CHOCURUA (Geo-026-062500-BMAP)
- 27 OSSISPEE LAKE (Geo-027-062500-BMAP)
- 28 KEZAR FALLS
- 29 HANOVER (Geo-029-062500-BMAP)
- 30 MASCOMA (Geo-030-062500-BMAP)
- 31 CARDIGAN (Geo-031-062500-BMAP)
- 32 HOLDERNESS (Geo-032-062500-BMAP)
- 33 WINNIPESAUKEE (Geo-033-062500-BMAP)
- 34 WOLFEBORO (Geo-034-062500-BMAP)
- 35 NEWFIELD
- 36 CLAREMONT
- 37 SUNAPEE (Geo-037-062500-BMAP)
- 38 MOUNT KEARSARGE
- 39 PENACOOK
- 40 GILMANTON (Geo-040-062500-BMPD)
- 41 ALTON (Geo-041-062500-BMAP)
- 42 BERWICK
- 43 BELLOWS FALLS (Geo-043-062500-BMPD)
- 44 LOVEWELL MOUNTAIN (Geo-044-062500-BMAP)
- 45 HILLSBORO (Geo-045-062500-BMAP)
- 46 CONCORD
- 47 SUNCOOK
- 48 MOUNT PAWTUCKAWAY (Geo-031-062500-BMPD)
- 49 DOVER (Geo-NHX-062500-BMAP)
- 50 YORK (Geo-NHX-062500-BMAP)
- 51 BRATTLEBORO (Geo-051+052-062500-BMAP)
- 52 KEENE (Geo-051+052-062500-BMAP)
- 53 MONADNOCK (Geo-053-062500-BMAP)
- 54 PETERBOROUGH (Geo-054-062500-BMAP)
- 55 MILFORD
- 56 MANCHESTER (Geo-056-062500-BMAP)
- 57 HAMPSTEAD-HAVERHILL (Geo-057-062500-BMAP)
- 58 NEWBURYPORT-EXETER (Geo-NHX-062500-BMAP)
- 59 NEWBURYPORT-EXETER EAST
- 60 WARWICK
- 61 WINCHENDON
- 62 FITCHBURG
- 63 GROTON
- 64 LOWELL
- 65 LAWRENCE



15' MAP STATUS

- COMPLETE
- NO MAP AVAILABLE

7.5' MAP STATUS

- Current
- No map available
- Complete
- Partial
- FEDMAP ongoing